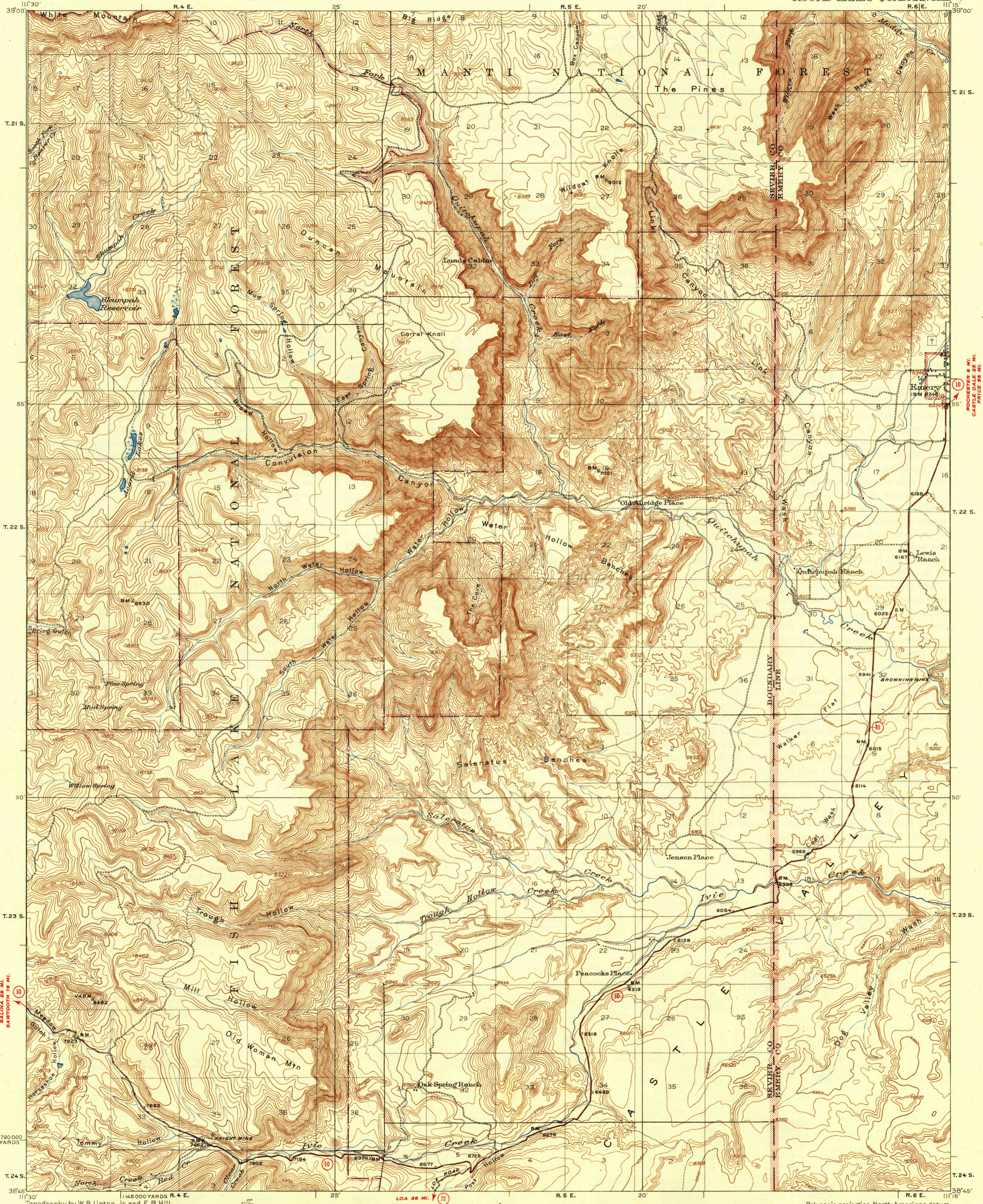


U.S.G.S.
FILE COPY
I. revision and editing



SALINA 29 MI.
SAWTOOTH 16 MI.

ROCHESTER 6 MI.
CASTLE DALE 25 MI.
PRICE 85 MI.

Topography by W.B. Upton, Jr. and E.B. Hill.
Surveyed in 1922-1923.

ROAD CLASSIFICATION
1946
Dependable hard surface
heavy-duty road
Secondary hard surface
all-weather road
More than two lanes indicated along road with tick at point of change

1946
Dirt weather roads
Loose surface graded
Unsurfaced graded
Dirt road

U.S. Route 15
State Route 20
3 LANE + LANE

APPROXIMATE MEAN
DECLINATION 1923



USGS
HISTORICAL FILE
TOPOGRAPHIC DIVISION

FILE COPY
I. revision and editing

ACORD LAKES, UTAH.
Edition of 1925.
reprinted 1947
N 3845-W 11115/15