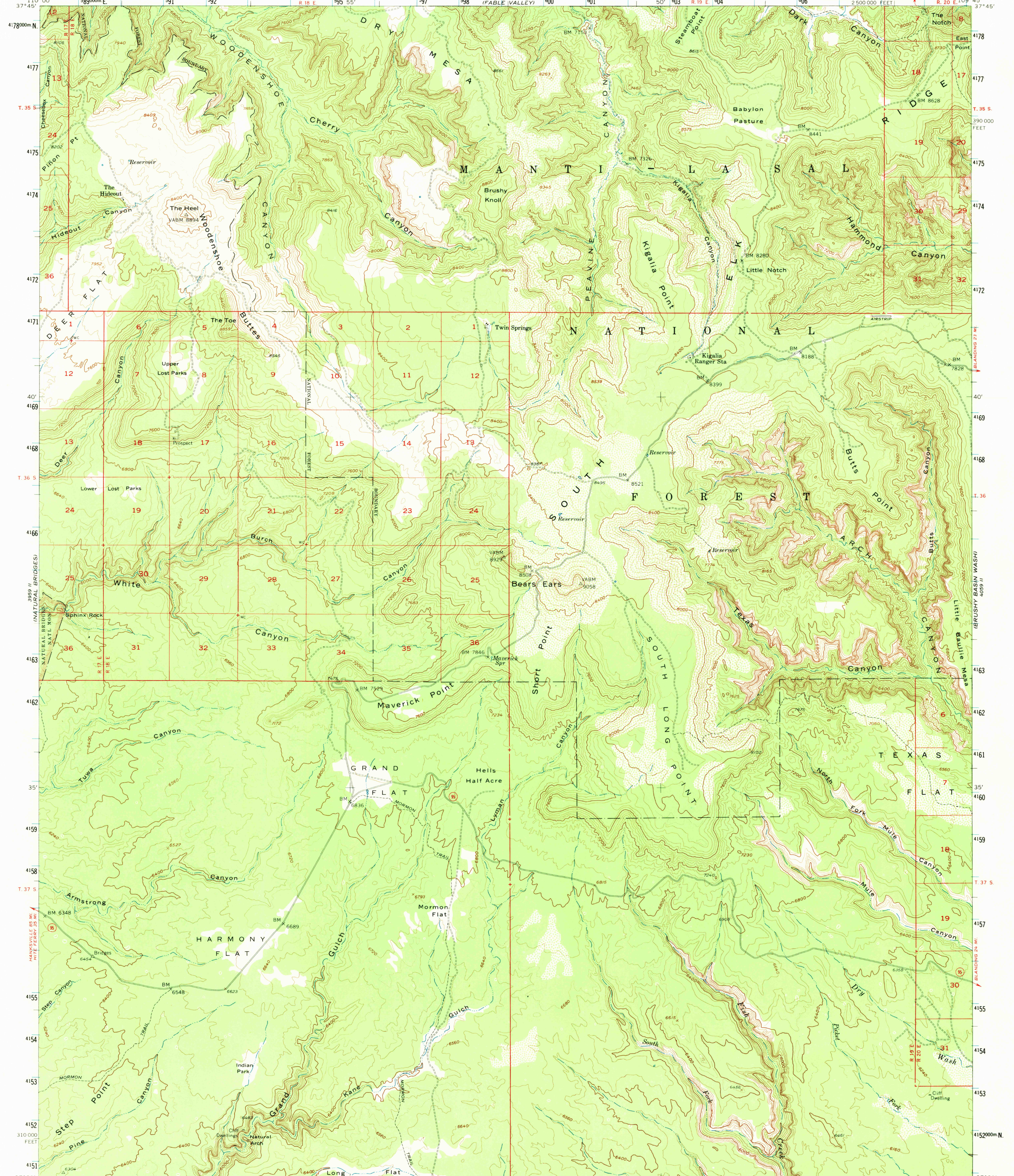


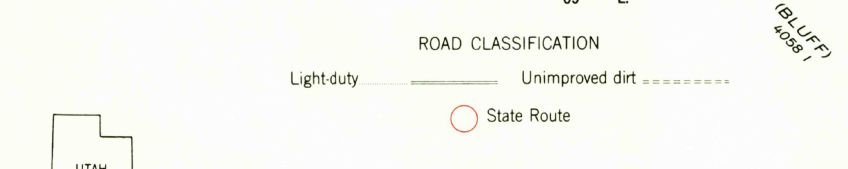
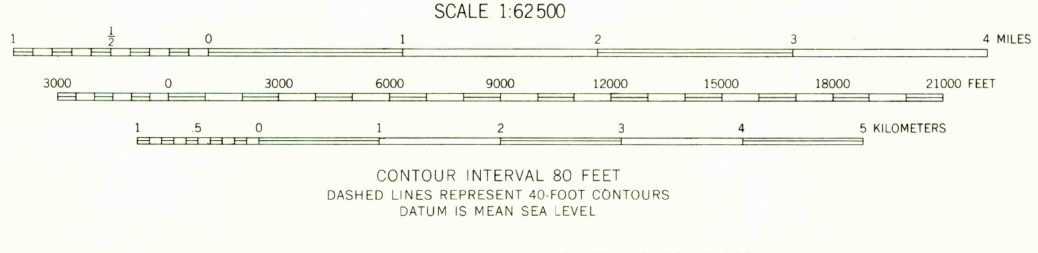
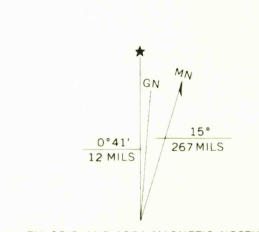
UNITED STATES
DEPARTMENT OF THE INTERIOR
GEOLOGICAL SURVEY

BEARS EARS QUADRANGLE
UTAH—SAN JUAN CO.
15 MINUTE SERIES (TOPOGRAPHIC)

GOOSEBERRY RANGE STA. 5.6 MI. ↑
2,500,000 FEET



Mapped, edited, and published by the Geological Survey
in cooperation with the Atomic Energy Commission
Control by USGS and USC&GS
Topography from aerial photographs by multiplex methods
Aerial photographs taken 1951 and 1952. Advance field check 1954
Polyconic projection. 1927 North American datum
10,000-foot grid based on Utah coordinate system, south zone
1000-meter Universal Transverse Mercator grid ticks,
zone 12, shown in blue
Unchecked elevation are shown in brown



THIS MAP COMPLIES WITH NATIONAL MAP ACCURACY STANDARDS
FOR SALE BY U. S. GEOLOGICAL SURVEY, DENVER, COLORADO 80225 OR WASHINGTON, D. C. 20242
A FOLDER DESCRIBING TOPOGRAPHIC MAPS AND SYMBOLS IS AVAILABLE ON REQUEST

BEARS EARS, UTAH
N3730—W10945/15
1954
AMS 4059 III—SERIES V797

JAN 09 1974

USGS
HISTORICAL FILE
TOPOGRAPHIC DIVISION

3300