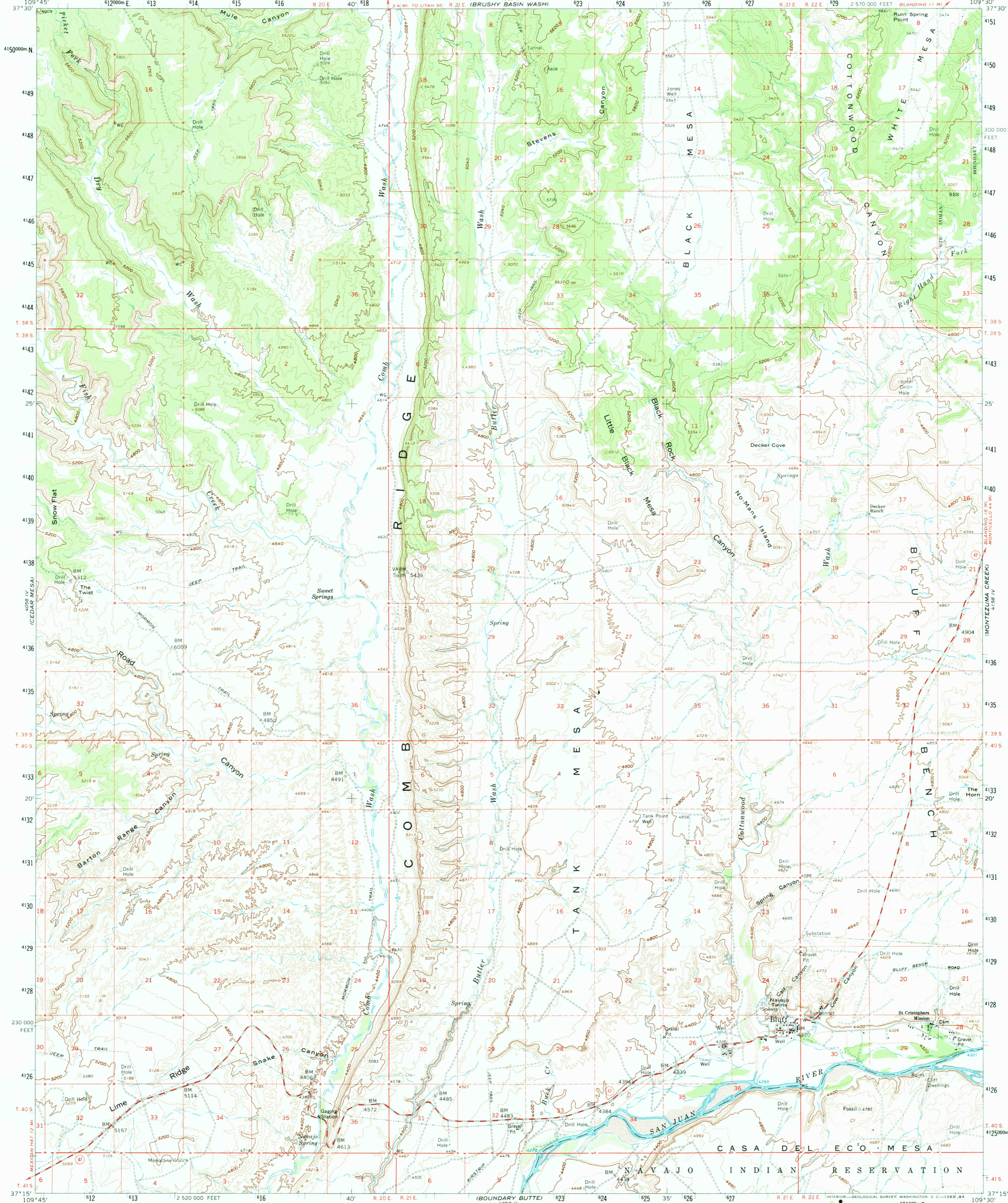
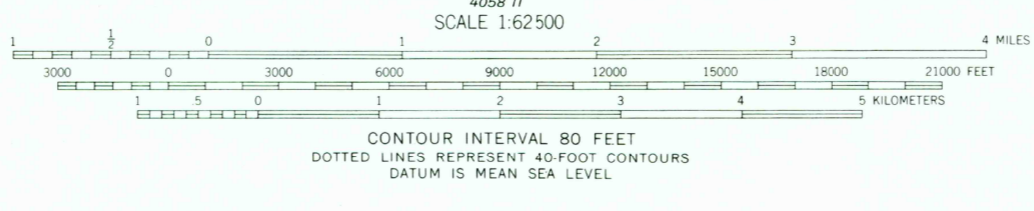
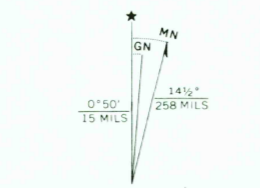


UNITED STATES
DEPARTMENT OF THE INTERIOR
GEOLOGICAL SURVEY

BLUFF QUADRANGLE
UTAH—SAN JUAN CO.
15 MINUTE SERIES (TOPOGRAPHIC)



Mapped, edited, and published by the Geological Survey
Control by USGS and USC&GS
West half compiled in 1962 from 1:24 000 scale maps dated 1962
East half topography by photogrammetric methods from aerial
photographs taken 1959. Field checked 1962
Polyconic projection. 1927 North American datum
10,000-foot grid based on Utah coordinate system, south zone
1000-meter Universal Transverse Mercator grid ticks,
zone 12, shown in blue
Where omitted, land lines have not been established



CONTOUR INTERVAL 80 FEET
DOTTED LINES REPRESENT 40-FOOT CONTOURS
DATUM IS MEAN SEA LEVEL



ROAD CLASSIFICATION
Medium-duty ——— Light-duty ———
Unimproved dirt - - - - -
State Route ○

The west half of this area also covered by 7.5-minute 1:24 000
scale maps: Bluff NW 1962 and Bluff SW 1962

THIS MAP COMPLIES WITH NATIONAL MAP ACCURACY STANDARDS
FOR SALE BY U. S. GEOLOGICAL SURVEY, DENVER, COLORADO 80225 OR WASHINGTON, D. C. 20242
A FOLDER DESCRIBING TOPOGRAPHIC MAPS AND SYMBOLS IS AVAILABLE ON REQUEST

BLUFF, UTAH
N3715—W10930/15
1962
AMS 4058 I—SERIES V797

RETURN TO:
USGS MMD HISTORICAL MAP ARCHIVES

USGS Library
Reston, VA.
Topo Archive

7/16/89