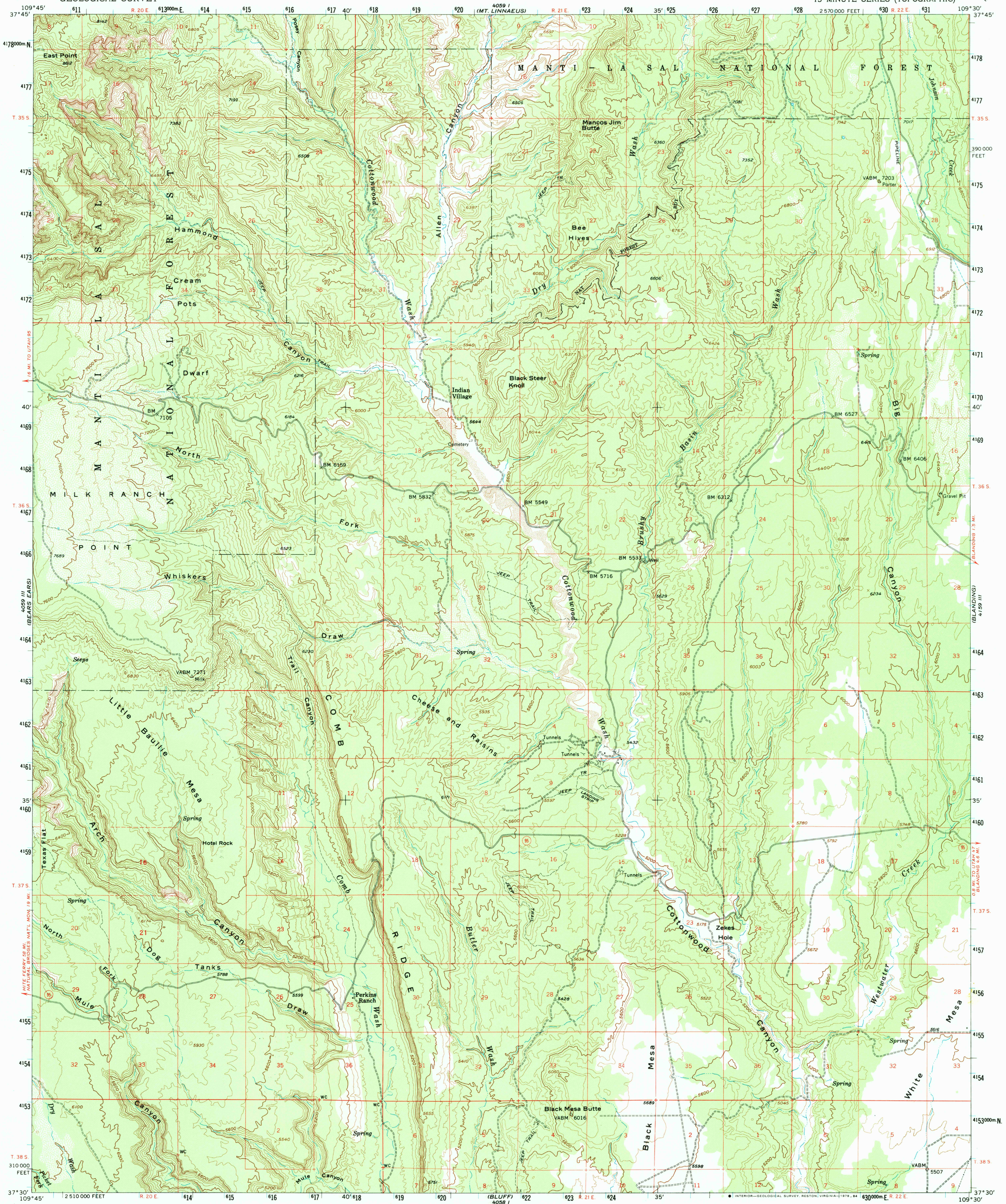
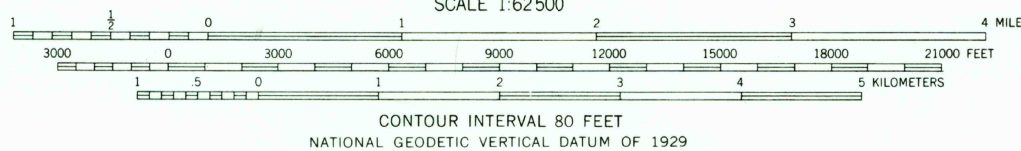
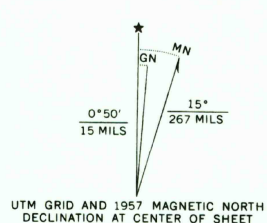


UNITED STATES
DEPARTMENT OF THE INTERIOR
GEOLOGICAL SURVEY

BRUSHY BASIN WASH QUADRANGLE
UTAH—SAN JUAN CO.
15 MINUTE SERIES (TOPOGRAPHIC)



Maped, edited, and published by the Geological Survey
with cooperation by the Atomic Energy Commission
Control by USGS and USC&GS
Topography from aerial photographs by photogrammetric methods
Aerial photographs taken 1953 and 1955
Advance field check 1957
Polyconic projection. 1927 North American datum
10,000-foot grid based on Utah coordinate system, south zone
1000-meter Universal Transverse Mercator grid ticks,
zone 12, shown in blue
Parts of T. 36 S.—R. 20 E., T. 37 S.—R. 20 E.,
and T. 38 S.—R. 20 E., are unsurveyed
Unchecked elevations are shown in brown



THIS MAP COMPLIES WITH NATIONAL MAP ACCURACY STANDARDS
FOR SALE BY U. S. GEOLOGICAL SURVEY, DENVER, COLORADO 80225, OR RESTON, VIRGINIA 22092
A FOLDER DESCRIBING TOPOGRAPHIC MAPS AND SYMBOLS IS AVAILABLE ON REQUEST



ROAD CLASSIFICATION
Light duty ————— Unimproved dirt —————
State Route ————

BRUSHY BASIN WASH, UTAH
N3730—W10930/15
1957
AMS 4059 II—SERIES V797

RETURN TO:
USGS NHD HISTORICAL MAP ARCHIVES

7-19-84