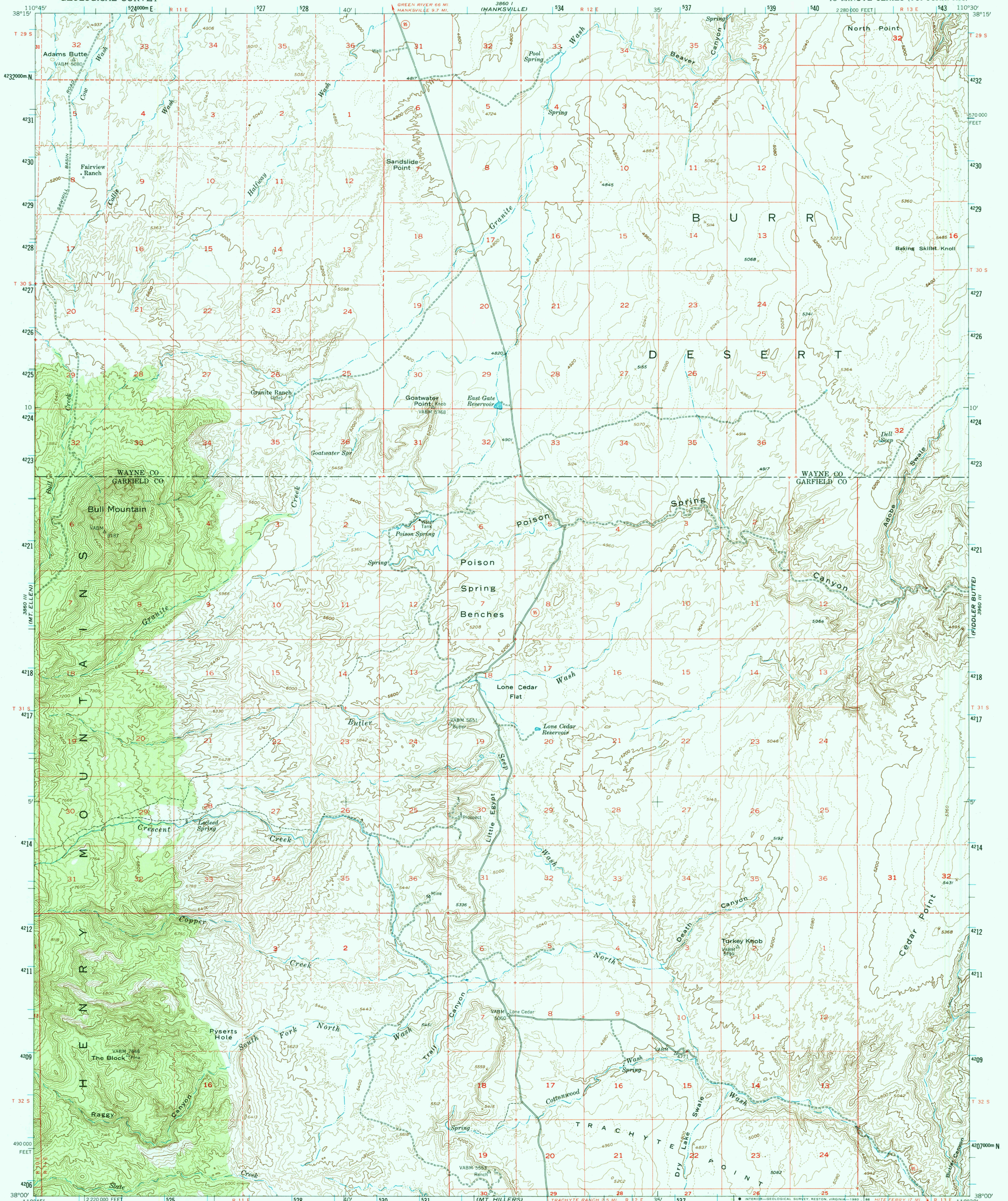
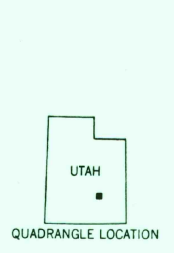
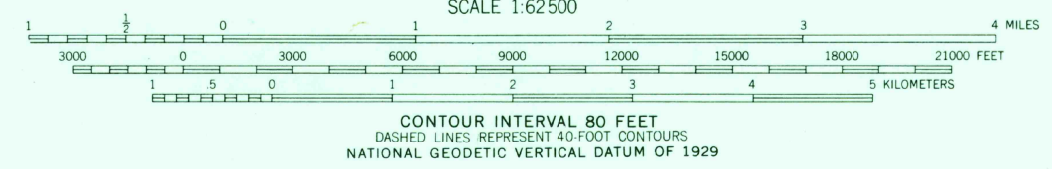
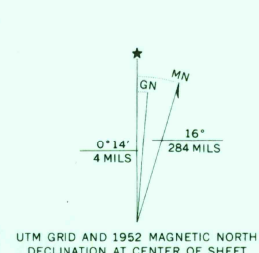


UNITED STATES  
DEPARTMENT OF THE INTERIOR  
GEOLOGICAL SURVEY

BULL MOUNTAIN QUADRANGLE  
UTAH  
15 MINUTE SERIES (TOPOGRAPHIC)



Maped, edited, and published by the Geological Survey  
with cooperation by the Atomic Energy Commission  
Control by USGS  
Topography from aerial photographs by multiplex methods  
Aerial photographs taken 1951-52. Advance field check 1952  
Polyconic projection. 1927 North American datum  
10,000-foot grid based on Utah coordinate system, south zone  
1000-meter Universal Transverse Mercator grid ticks,  
zone 12, shown in blue  
Dashed land lines indicate approximate locations  
Unchecked elevations are shown in brown  
To place on the predicted North American Datum 1983 move  
the projection lines 6 meters north and 62 meters east



ROAD CLASSIFICATION  
Light-duty ————— Unimproved dirt —————  
State Route ————

BULL MOUNTAIN, UTAH  
N 3800 — W 11030 / 15  
1952

DMA 3860 II—SERIES V797

THIS MAP COMPLIES WITH NATIONAL MAP ACCURACY STANDARDS  
FOR SALE BY U. S. GEOLOGICAL SURVEY, DENVER, COLORADO 80225, OR RESTON, VIRGINIA 22092  
A FOLDER DESCRIBING TOPOGRAPHIC MAPS AND SYMBOLS IS AVAILABLE ON REQUEST

USGS MIND HISTORICAL MAP  
JUN 10 1986  
REC'D FILE COPY