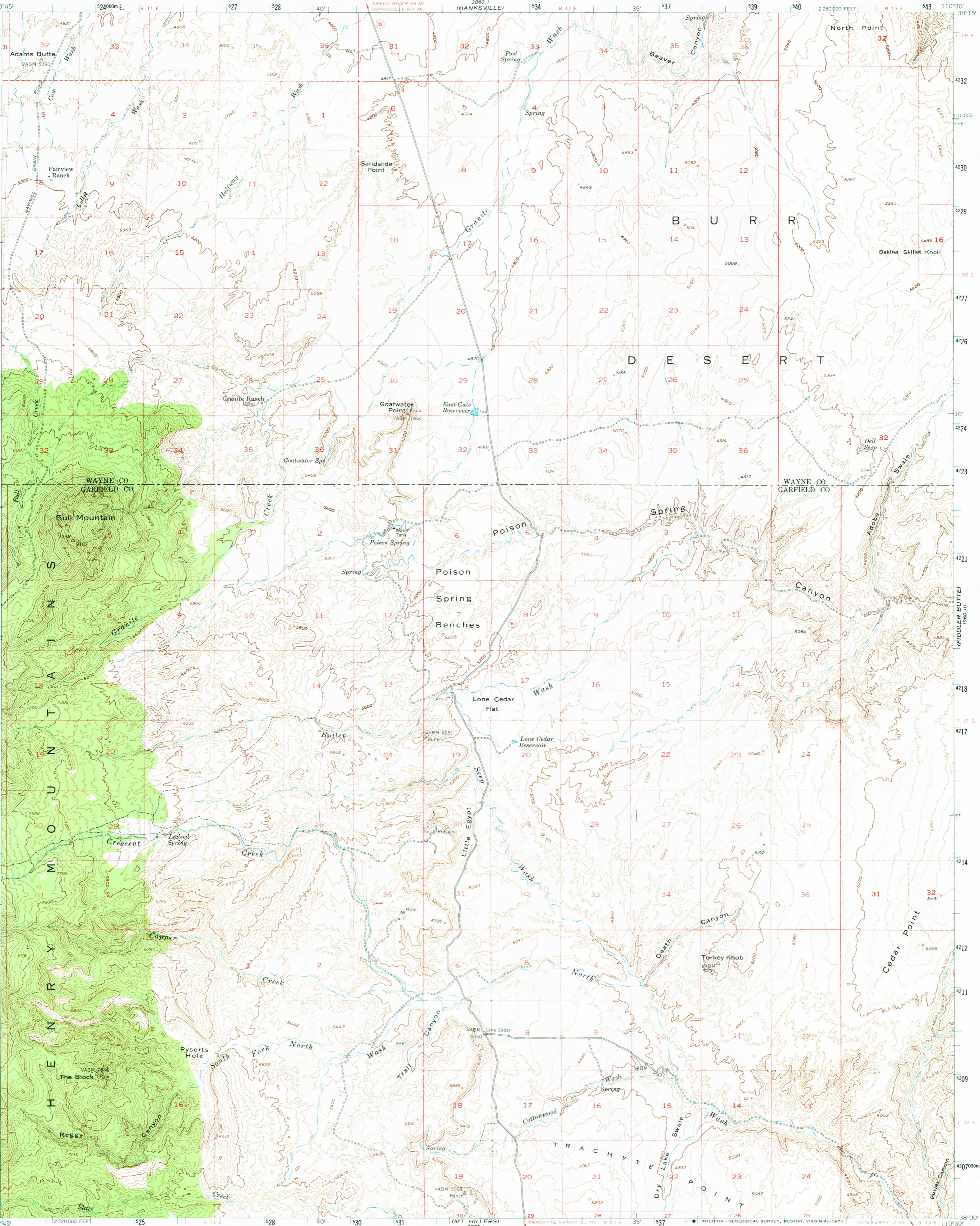
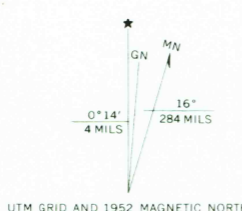


UNITED STATES
DEPARTMENT OF THE INTERIOR
GEOLOGICAL SURVEY

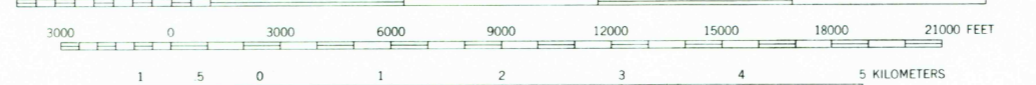
BULL MOUNTAIN QUADRANGLE
UTAH
15 MINUTE SERIES (TOPOGRAPHIC)



Mapped, edited, and published by the Geological Survey
with cooperation by the Atomic Energy Commission
Control by USGS
Topography from aerial photographs by multiplex methods
Aerial photographs taken 1951-52. Advance field check 1952
Polyconic projection. 1927 North American datum
10,000-foot grid based on Utah coordinate system, south zone
1000-meter Universal Transverse Mercator grid ticks,
zone 12, shown in blue
Dashed land lines indicate approximate locations
Unchecked elevations are shown in brown



SCALE 1:62,500



CONTOUR INTERVAL 80 FEET
DASHED LINES REPRESENT HALF INTERVAL CONTOURS
DATUM IS MEAN SEA LEVEL



ROAD CLASSIFICATION
Light-duty ——— Unimproved dirt ———
State Route ○

BULL MOUNTAIN, UTAH
N 3800—W 11030/15
1952

AMS 3860 II—SERIES V797