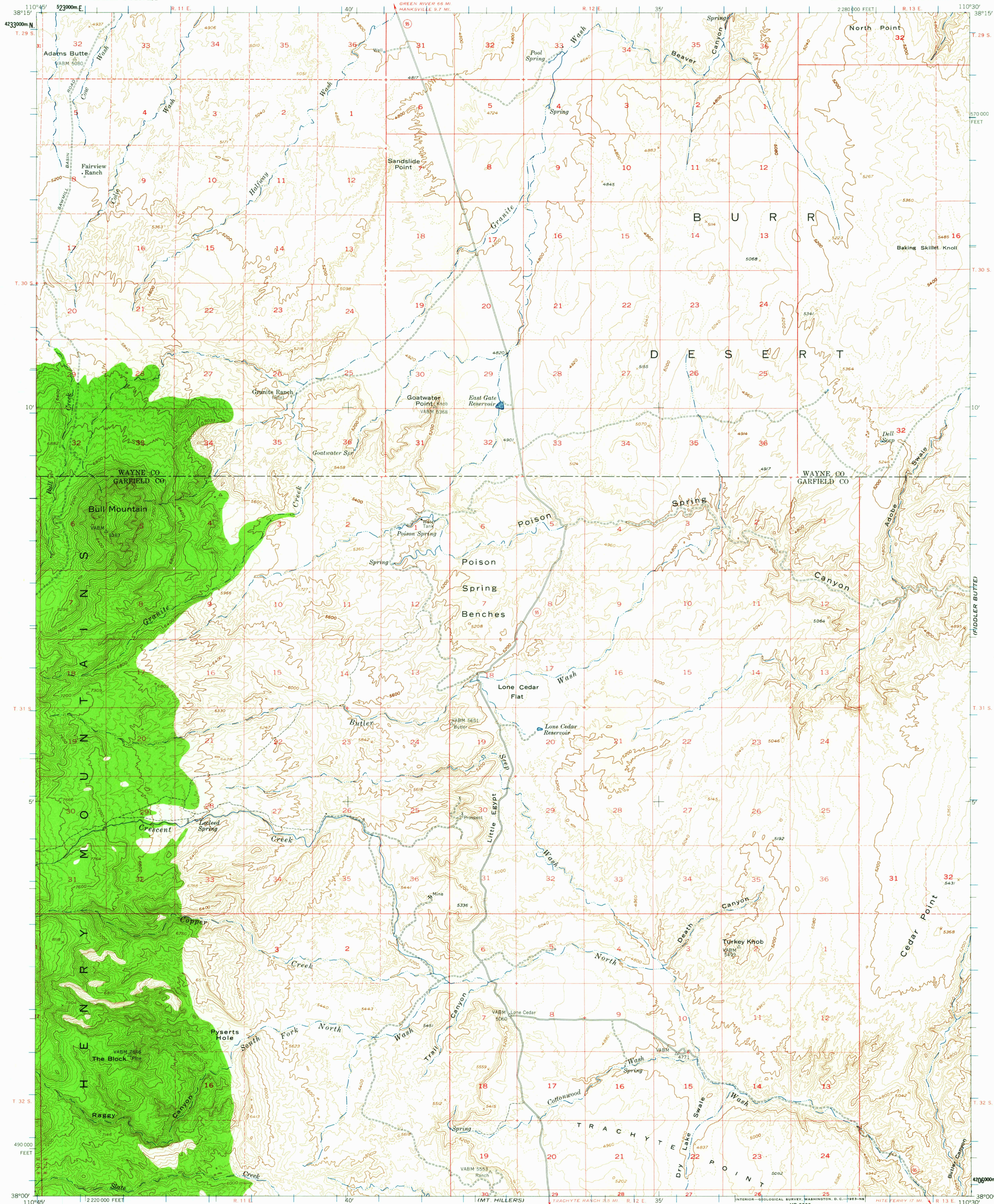


FACTORY BUTTE

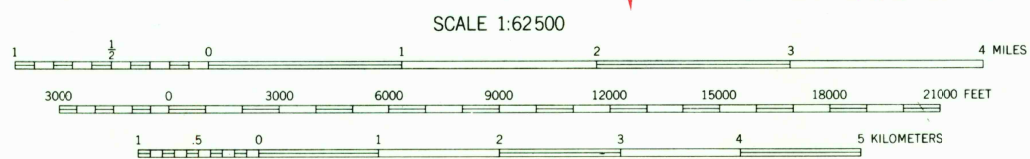
UNITED STATES  
DEPARTMENT OF THE INTERIOR  
GEOLOGICAL SURVEY

BULL MOUNTAIN QUADRANGLE  
UTAH  
15 MINUTE SERIES (TOPOGRAPHIC)



Mapped, edited, and published by the Geological Survey  
with cooperation by the Atomic Energy Commission  
Control by USGS  
Topography from aerial photographs by multiplex methods  
Aerial photographs taken 1951-52. Advance field check 1952  
Polyconic projection. 1927 North American datum.  
10,000-foot grid based on Utah coordinate system, south zone  
1000-meter Universal Transverse Mercator grid ticks,  
zone 12, shown in blue  
Dashed land lines indicate approximate locations  
Unchecked elevations are shown in brown

16°  
TRUE NORTH  
MAGNETIC NORTH  
APPROXIMATE MEAN  
DECLINATION, 1952



CONTOUR INTERVAL 80 FEET  
DASHED LINES REPRESENT HALF INTERVAL CONTOURS  
DATUM IS MEAN SEA LEVEL  
THIS MAP COMPLIES WITH NATIONAL MAP ACCURACY STANDARDS  
FOR SALE BY U. S. GEOLOGICAL SURVEY, DENVER 25, COLORADO OR WASHINGTON 25, D. C.  
A FOLDER DESCRIBING TOPOGRAPHIC MAPS AND SYMBOLS IS AVAILABLE ON REQUEST

USGS  
HISTORICAL FILE  
TOPOGRAPHIC DIVISION

FILE COPY  
TOPOGRAPHIC DIVISION

ROAD CLASSIFICATION  
1963  
Light-duty ———— Unimproved dirt ————  
○ State Route

BULL MOUNTAIN, UTAH  
N 3800—W 11030/15  
1952

AUG 14 1963

2245