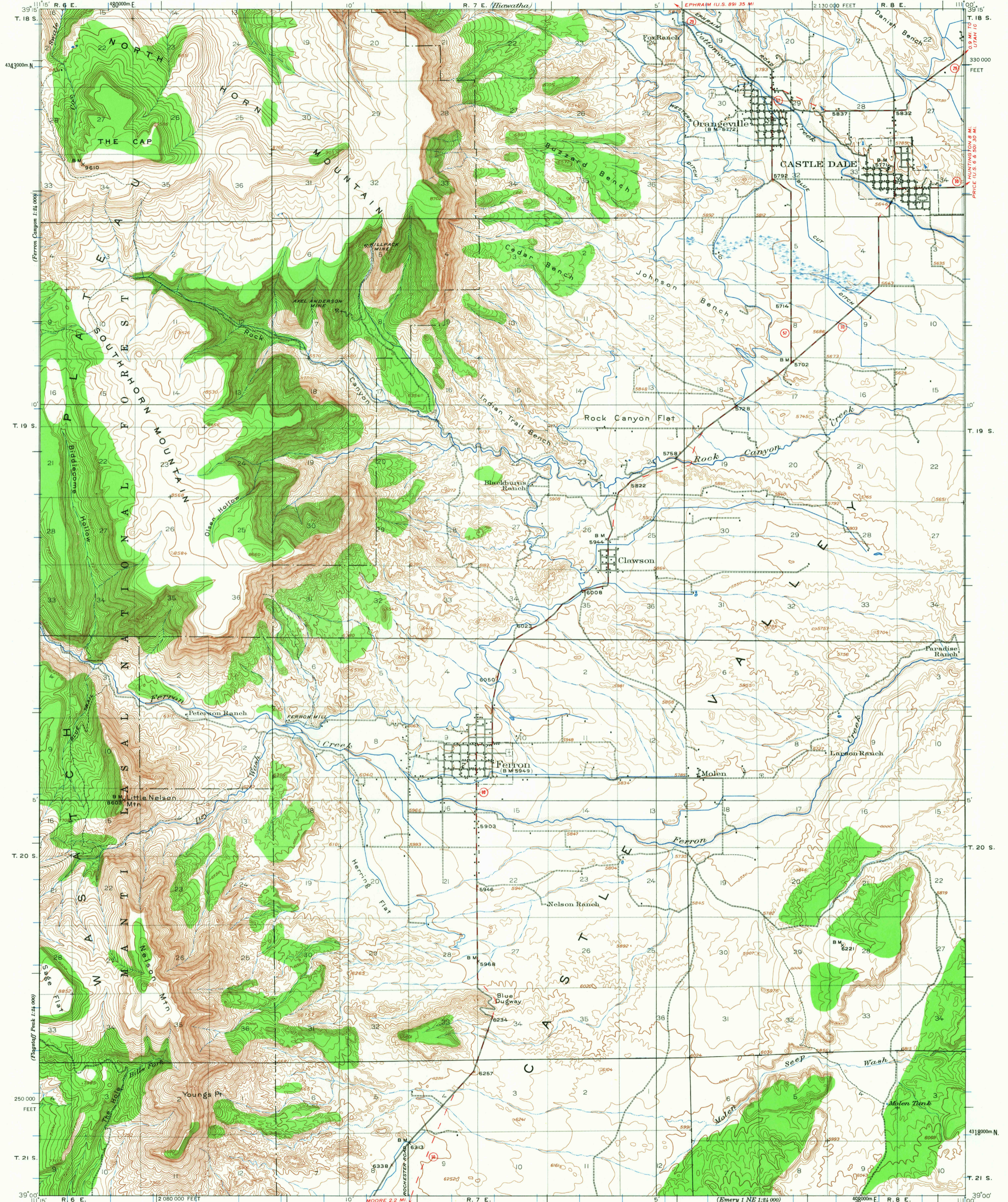


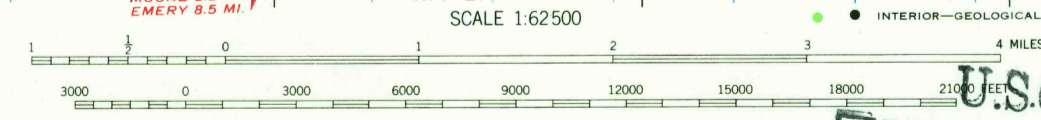
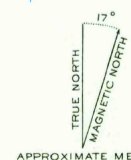
UNITED STATES
DEPARTMENT OF THE INTERIOR
GEOLOGICAL SURVEY

UTAH
(EMERY COUNTY)
CASTLE DALE QUADRANGLE



Topography by W.B. Upton, Jr. and E.B. Hill.
Surveyed in 1922-1923.

ROAD CLASSIFICATION
Heavy-duty ——— Light-duty ———
Unimproved dirt - - - - -
State Route ○



CONTOUR INTERVAL 50 FEET
DATUM IS MEAN SEA LEVEL

U.S.G.S.
FILE COPY
TOPOGRAPHIC DIVISION

Polyconic projection. To place on 1927 North American datum
move projection lines 70 feet north and 50 feet west
10,000-foot grid based on Utah (Central)
rectangular coordinate system
1000-meter Universal Transverse Mercator grid ticks,
zone 12, shown in blue

CASTLE DALE, UTAH
N 3900-W 11100/15

1923

FOR SALE BY U. S. GEOLOGICAL SURVEY, DENVER, COLORADO 80225 OR WASHINGTON, D. C. 20242
A FOLDER DESCRIBING TOPOGRAPHIC MAPS AND SYMBOLS IS AVAILABLE ON REQUEST

USGS
HISTORICAL FILE
TOPOGRAPHIC DIVISION

MAY 7 1968