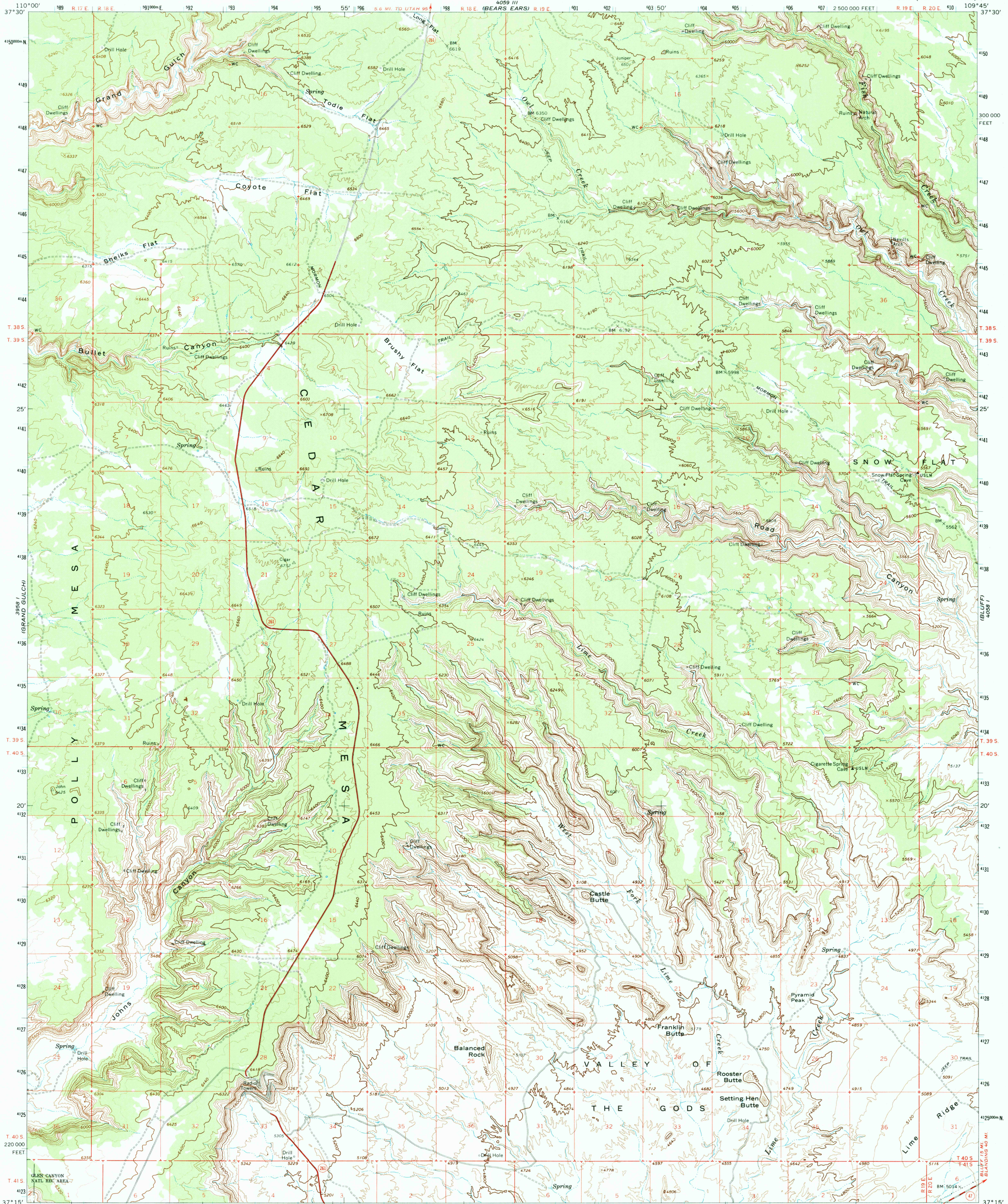


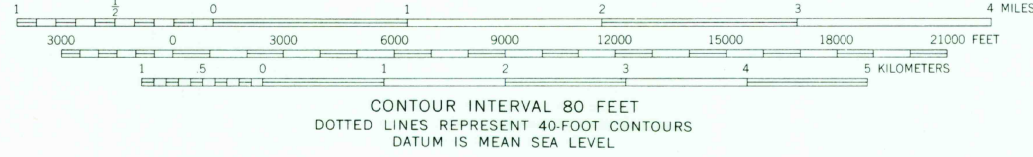
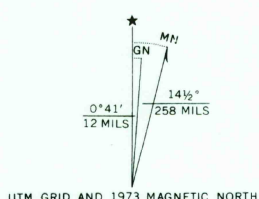
UNITED STATES
DEPARTMENT OF THE INTERIOR
GEOLOGICAL SURVEY

CEDAR MESA QUADRANGLE
UTAH—SAN JUAN CO.
15 MINUTE SERIES (TOPOGRAPHIC)

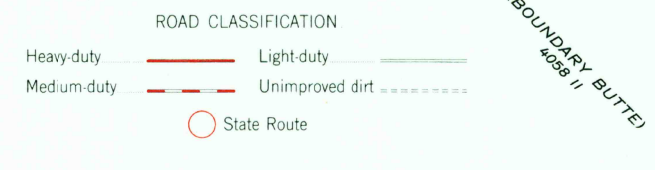


Mapped, edited, and published by the Geological Survey

Control by USGS and USC&GS
Topography by photogrammetric methods from aerial photographs taken 1959. Field checked 1963
Polyconic projection. 1927 North American datum
10,000-foot grid based on Utah coordinate system, south zone
1000-meter Universal Transverse Mercator grid ticks, zone 12, shown in blue
Where omitted, land lines have not been established



CONTOUR INTERVAL 80 FEET
DOTTED LINES REPRESENT 40-FOOT CONTOURS
DATUM IS MEAN SEA LEVEL



CEDAR MESA, UTAH
N3715—W10945/15

1963
MINOR REVISIONS 1973
AMS 4058 IV—SERIES V797

THIS MAP COMPLIES WITH NATIONAL MAP ACCURACY STANDARDS
FOR SALE BY U.S. GEOLOGICAL SURVEY, DENVER, COLORADO 80225, OR RESTON, VIRGINIA 22092
A FOLDER DESCRIBING TOPOGRAPHIC MAPS AND SYMBOLS IS AVAILABLE ON REQUEST