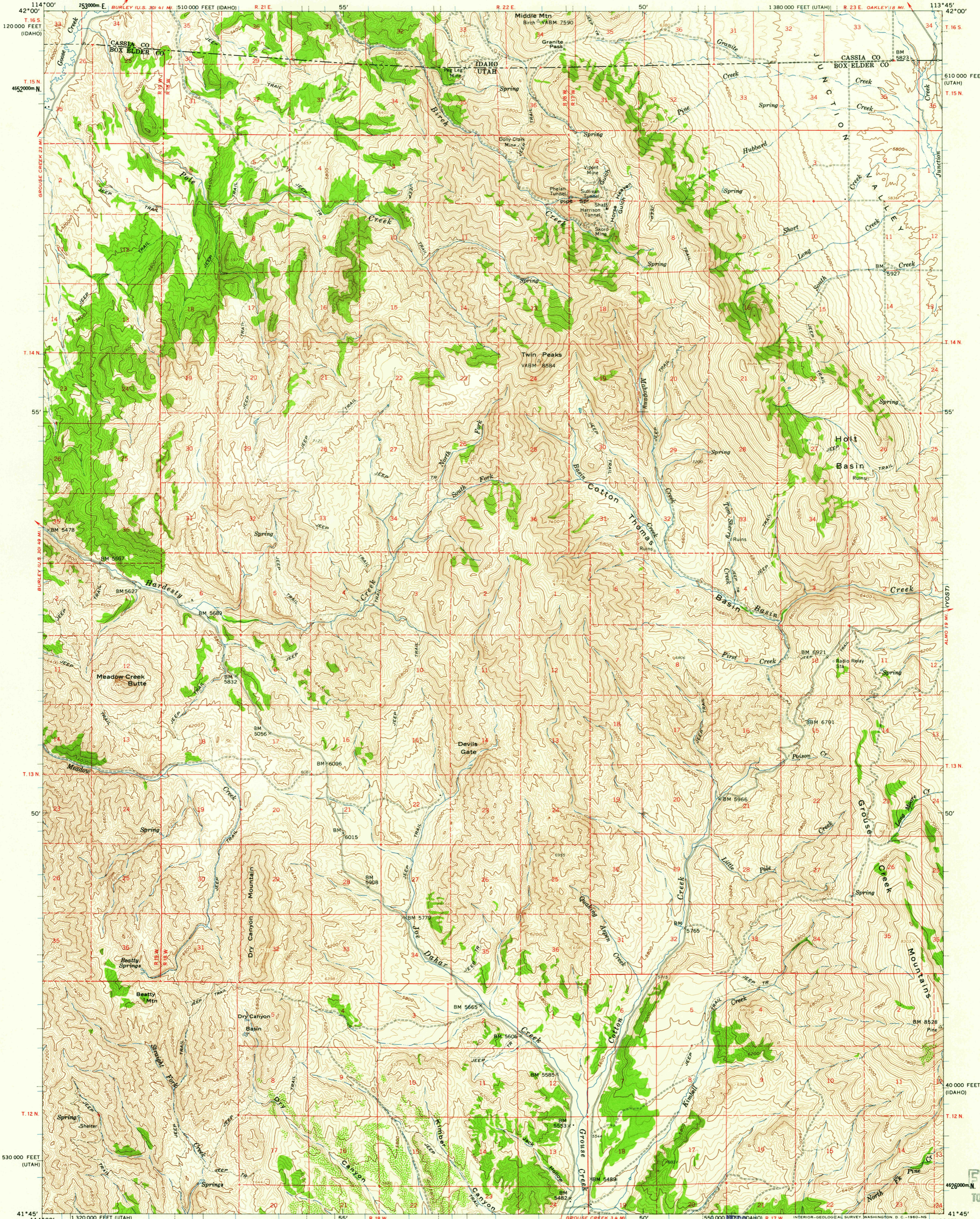
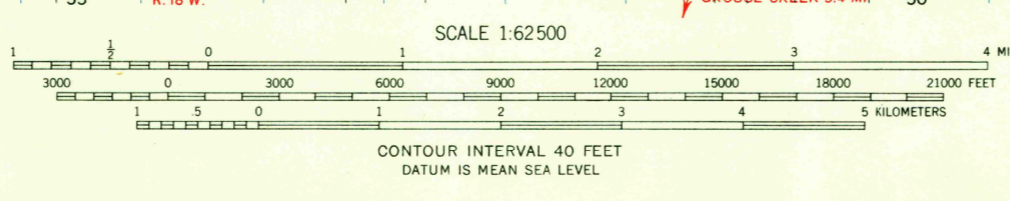
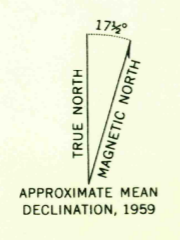


UNITED STATES
DEPARTMENT OF THE INTERIOR
GEOLOGICAL SURVEY

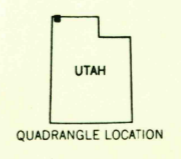
COTTON THOMAS BASIN QUADRANGLE
UTAH-IDAHO
15 MINUTE SERIES (TOPOGRAPHIC)



Mapped, edited, and published by the Geological Survey
Control by USGS and USC&GS
Topography from aerial photographs by photogrammetric methods
Aerial photographs taken 1956. Field check 1959
Polyconic projection. 1927 North American datum
10,000-foot grids based on Utah coordinate system, north zone
and Idaho coordinate system, central zone
1000-meter Universal Transverse Mercator grid ticks,
zone 12, shown in blue
Land lines omitted in T. 12 N.-R. 19 W. and parts of T. 12 N.-R. 18 W.
because of insufficient data
Dashed land lines indicate approximate locations
Unchecked elevations are shown in brown



U.S.G.S.
HISTORICAL FILE
TOPOGRAPHIC DIVISION



ROAD CLASSIFICATION
Light-duty ————— Unimproved dirt - - - - -

THIS MAP COMPLIES WITH NATIONAL MAP ACCURACY STANDARDS
FOR SALE BY U.S. GEOLOGICAL SURVEY, DENVER 25, COLORADO OR WASHINGTON 25, D. C.
A FOLDER DESCRIBING TOPOGRAPHIC MAPS AND SYMBOLS IS AVAILABLE ON REQUEST

COTTON THOMAS BASIN, UTAH-IDAHO
N4145-W11345/15
1959

U.S.G.S.
FILE COP
TOPOGRAPHIC DIVISION
NOV - 7 1960
3040