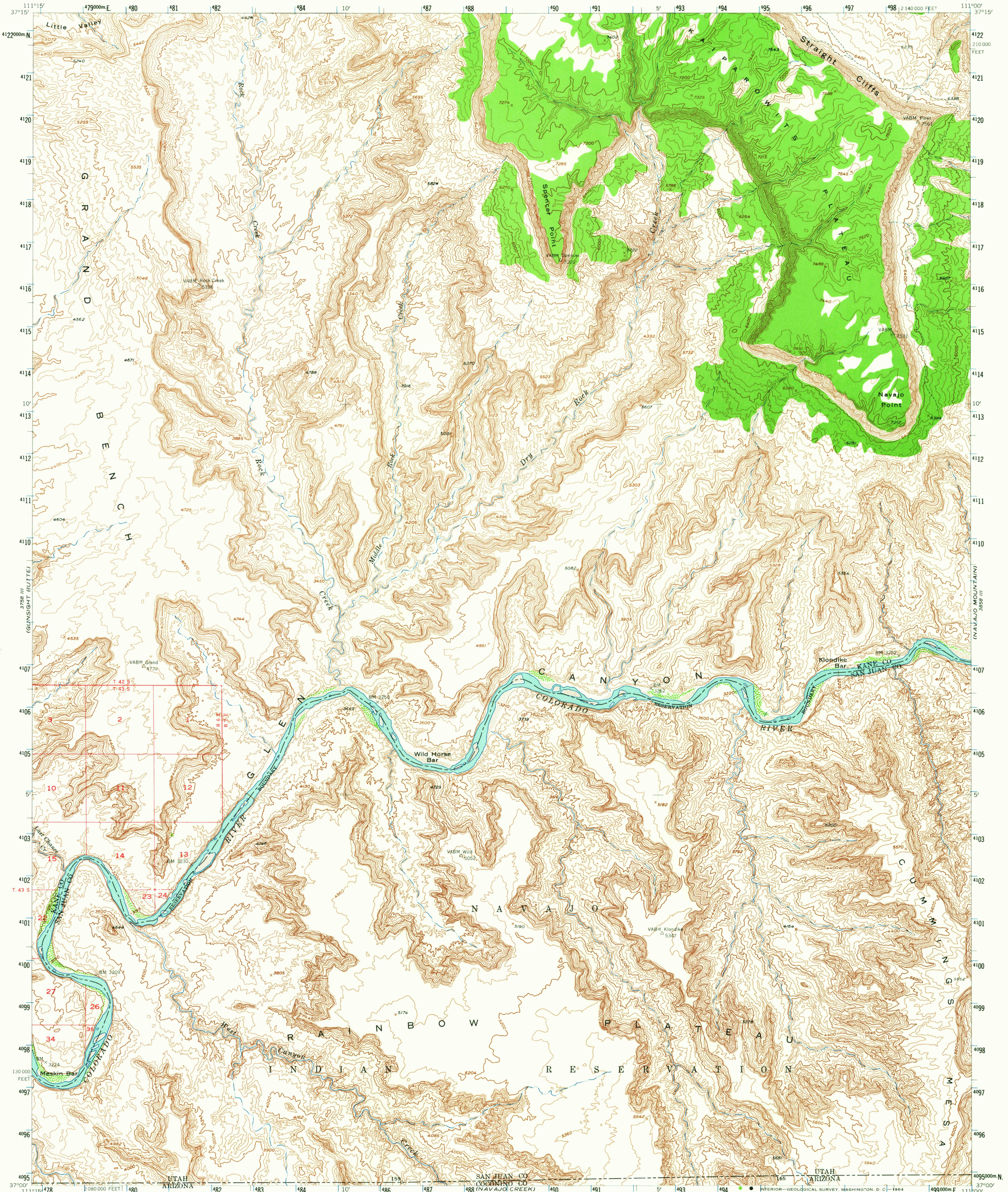
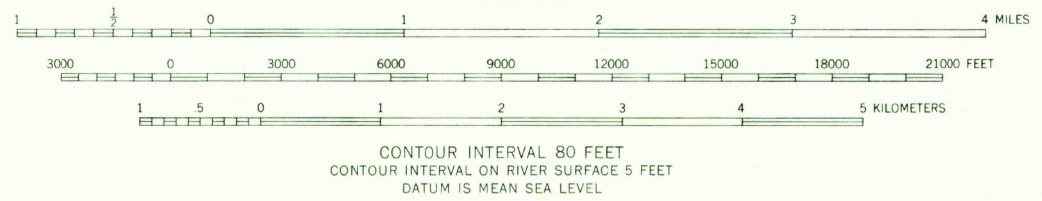
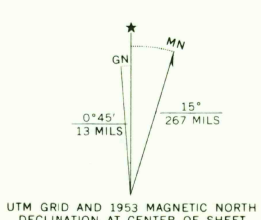


3888 IV  
(THE PINCON)



Mapped, edited, and published by the Geological Survey

Control by USGS and USC&GS  
Topography from aerial photographs by multiplex methods  
Aerial photographs taken 1951. Advance field check 1953  
Polyconic projection. 1927 North American datum  
10,000-foot grid based on Utah coordinate system, south zone  
Unchecked elevations are shown in brown  
1000-meter Universal Transverse Mercator grid ticks,  
zone 12, shown in blue



ROAD CLASSIFICATION

Heavy-duty	Light-duty
Medium-duty	Unimproved dirt
U. S. Route	State Route

USGS HISTORICAL FILE TOPOGRAPHIC DIVISION  
CUMMINGS MESA, UTAH—ARIZ.  
N 3700—W 11100/15  
1953  
AMS 3758 II—SERIES V797

THIS MAP COMPLIES WITH NATIONAL MAP ACCURACY STANDARDS  
FOR SALE BY U. S. GEOLOGICAL SURVEY, DENVER 25, COLORADO OR WASHINGTON 25, D. C.  
A FOLDER DESCRIBING TOPOGRAPHIC MAPS AND SYMBOLS IS AVAILABLE ON REQUEST

4115  
FEB 9 1965