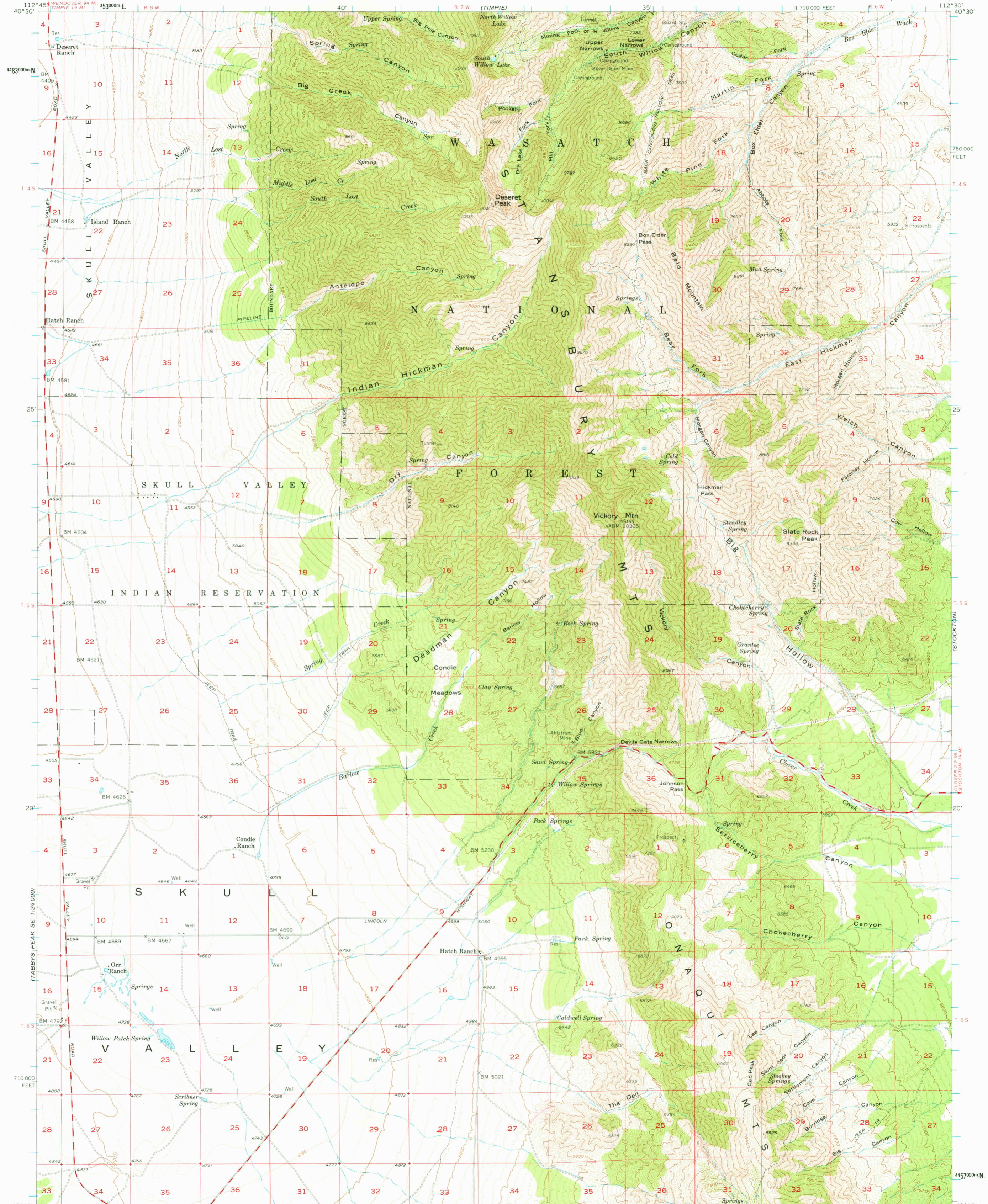
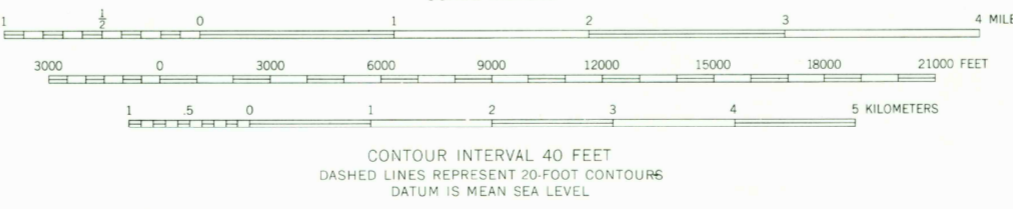
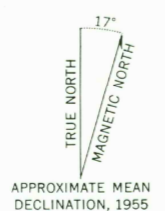


(BRANTSVILLE)  
1:24,000



Mapped, edited, and published by the Geological Survey  
Control by USGS and USC&GS  
Topography from aerial photographs by multicolor methods  
and by photostereoscopic methods. Aerial photographs taken 1953  
Advance field check 1955  
Polyconic projection. 1927 North American datum  
10,000-foot grid based on Utah coordinate system; central zone.  
Dashed land lines indicate approximate locations  
Unchecked elevations are shown in brown  
1000-meter Universal Transverse Mercator grid ticks,  
zone 12, shown in blue



ROAD CLASSIFICATION

Medium duty	Light-duty
Unimproved dirt	



MAY 19 1978  
DESERET PEAK, UTAH  
N4015-W11230/15  
1955

THIS MAP COMPLIES WITH NATIONAL MAP ACCURACY STANDARDS  
FOR SALE BY U.S. GEOLOGICAL SURVEY, DENVER 25, COLORADO OR WASHINGTON 25, D. C.  
A FOLDER DESCRIBING TOPOGRAPHIC MAPS AND SYMBOLS IS AVAILABLE ON REQUEST

USGS  
Historical File  
Topographic Division

2300