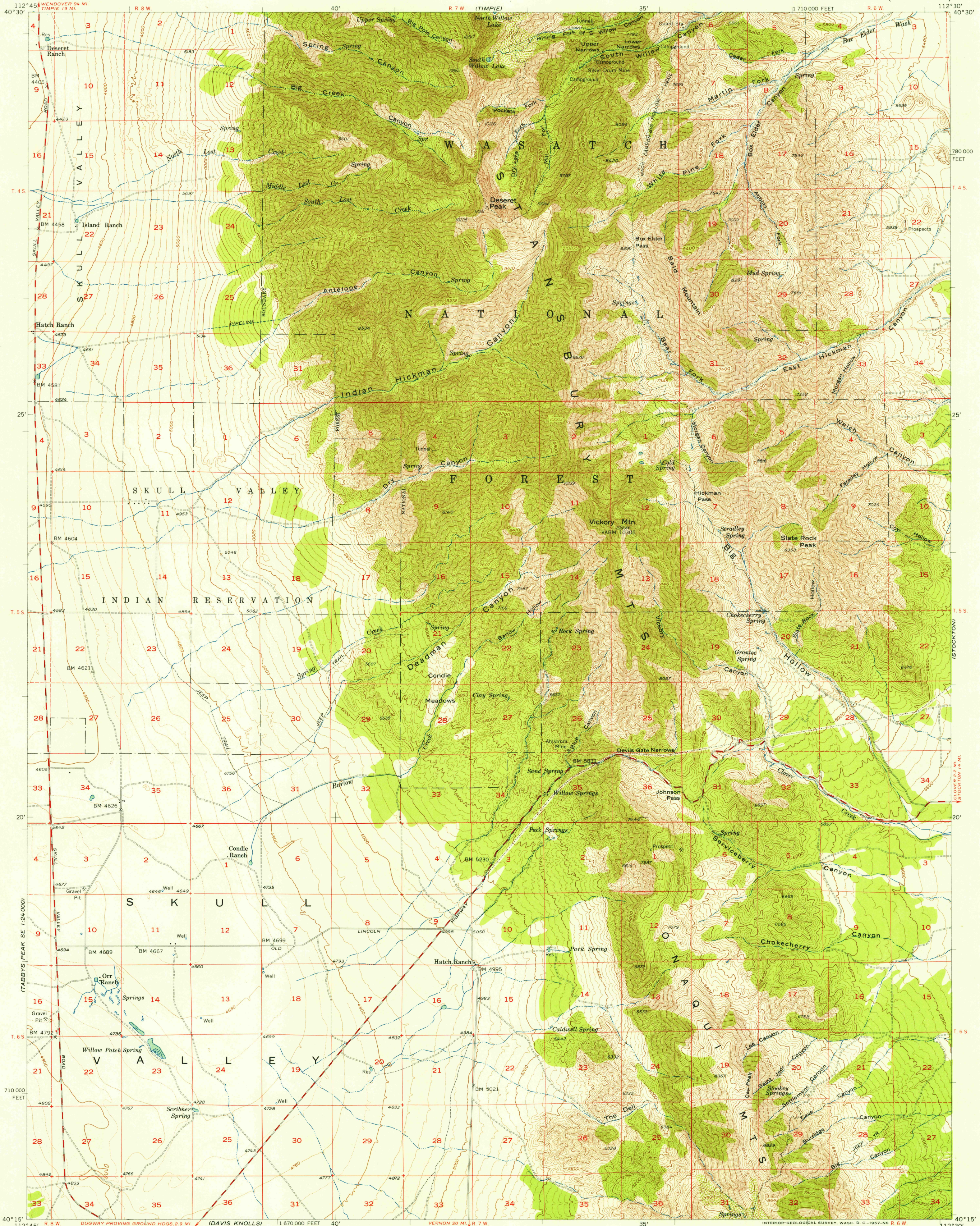
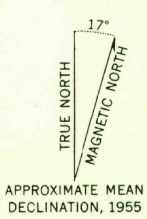


GRANTSVILLE
1:24,000

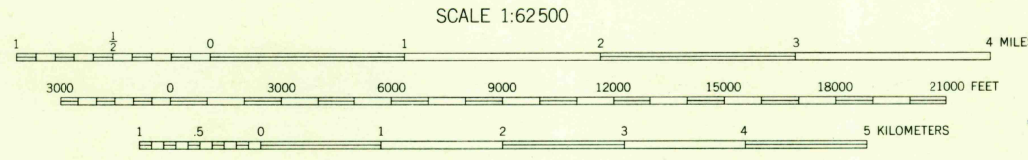


Mapped, edited, and published by the Geological Survey
Control by USGS and USC&GS
Topography from aerial photographs by multiplex methods
and by planetable surveys. Aerial photographs taken 1953
Advance field check 1955
Polyconic projection. 1927 North American datum
10,000-foot grid based on Utah coordinate system, central zone.
Dashed land lines indicate approximate locations
Unchecked elevations are shown in brown

CAMELS BACK RIDGE NE
1:24,000

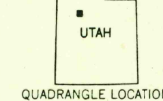


APPROXIMATE MEAN
DECLINATION, 1955



CONTOUR INTERVAL 40 FEET
DASHED LINES REPRESENT 20-FOOT CONTOURS
DATUM IS MEAN SEA LEVEL

USGS
HISTORICAL FILE
TOPOGRAPHIC DIVISION



QUADRANGLE LOCATION

ROAD CLASSIFICATION
Medium-duty ——— Light-duty ———
Unimproved dirt - - - - -

DESERET PEAK, UTAH
N4015—W11230/15

1955

THIS MAP COMPLIES WITH NATIONAL MAP ACCURACY STANDARDS
FOR SALE BY U. S. GEOLOGICAL SURVEY, DENVER 2, COLORADO OR WASHINGTON 25, D. C.
A FOLDER DESCRIBING TOPOGRAPHIC MAPS AND SYMBOLS IS AVAILABLE ON REQUEST

NOV - 5 1957
1910