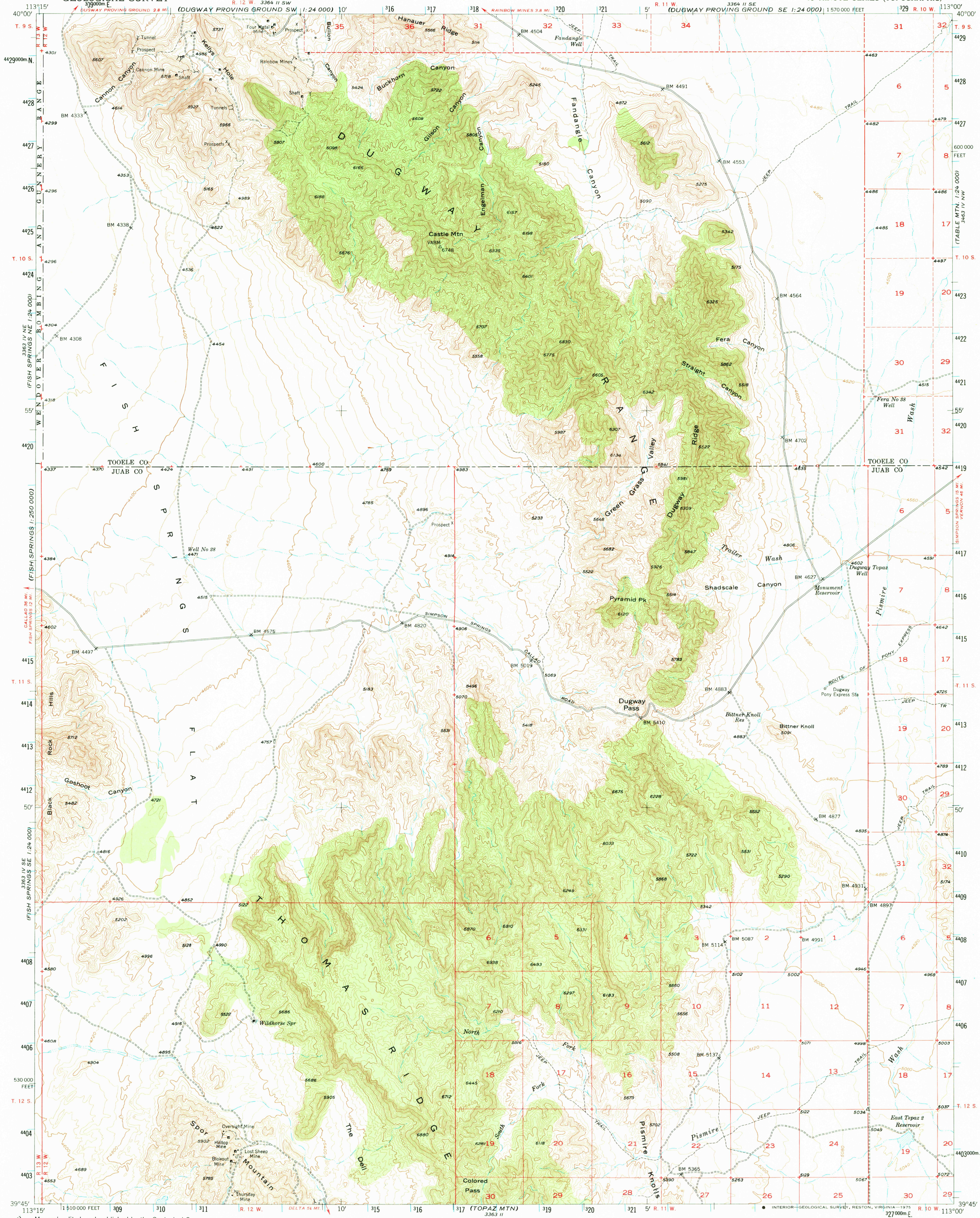
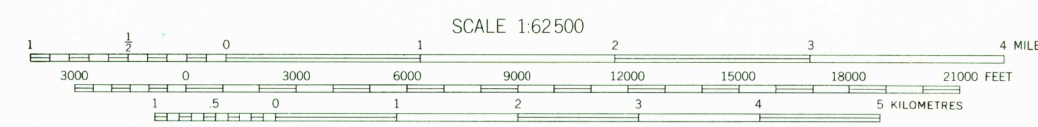


UNITED STATES  
DEPARTMENT OF THE INTERIOR  
GEOLOGICAL SURVEY

DUGWAY RANGE QUADRANGLE  
UTAH  
15 MINUTE SERIES (TOPOGRAPHIC)



Mapped, edited, and published by the Geological Survey  
Control by USGS and USC&GS  
Topography from aerial photographs by photogrammetric methods  
and by plane-table surveys 1953. Aerial photographs taken 1951  
Polyconic projection. 1927 North American datum  
10,000-foot grid based on Utah coordinate system, central zone  
Dashed land lines indicate approximate locations  
Unchecked elevations are shown in brown  
1000-metre Universal Transverse Mercator grid ticks,  
zone 12, shown in blue



CONTOUR INTERVAL 40 FEET  
DOTTED LINES REPRESENT HALF-INTERVAL CONTOURS  
NATIONAL GEODETIC VERTICAL DATUM OF 1929

THIS MAP COMPLIES WITH NATIONAL MAP ACCURACY STANDARDS  
FOR SALE BY U. S. GEOLOGICAL SURVEY, DENVER, COLORADO 80225, OR RESTON, VIRGINIA 22092  
A FOLDER DESCRIBING TOPOGRAPHIC MAPS AND SYMBOLS IS AVAILABLE ON REQUEST

ROAD CLASSIFICATION  
Heavy-duty 4 LANE 6 LANE Light-duty  
Medium-duty 4 LANE 6 LANE Unimproved dirt  
U. S. Route State Route

The north half and south-east quarter of  
this area is also covered by 1:24 000 scale maps of  
Dugway Range NE, Dugway Range NW and Dugway Pass  
7.5 minute quadrangles, surveyed in 1953.  
**DUGWAY RANGE, UTAH**  
N 3945-W 11300/15

1953  
AMS 3363 I-SERIES V797