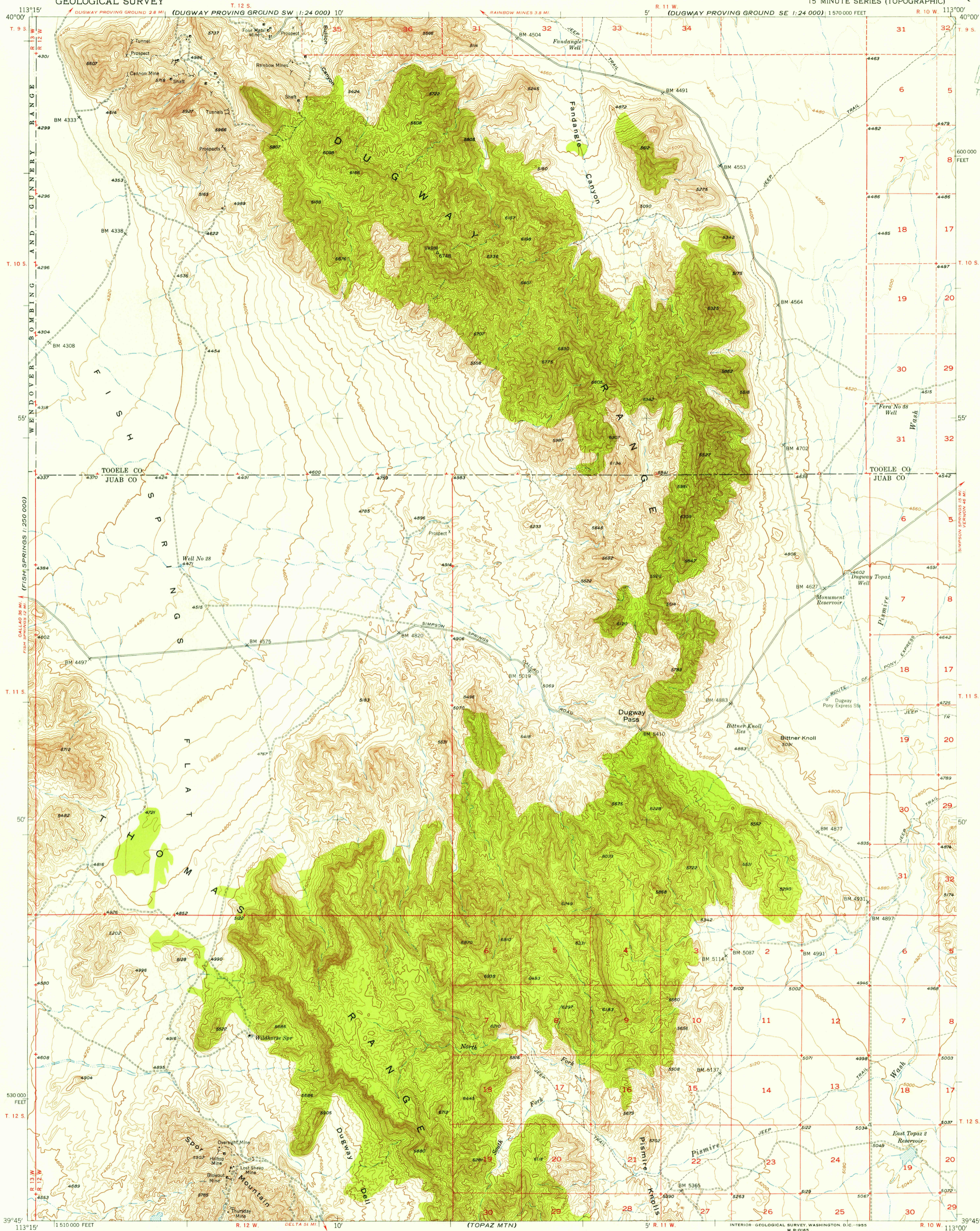


U.S.G.S.
FILE COPY
TOPOGRAPHIC DIVISION



Mapped, edited, and published by the Geological Survey
Control by USGS and USC&GS

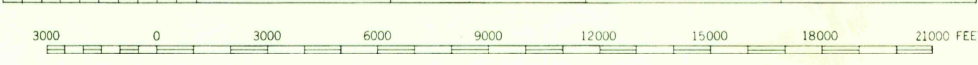
Topography from aerial photographs by photogrammetric methods
and by plane-table surveys 1953. Aerial photographs taken 1951

Polyconic projection. 1927 North American datum
10,000-foot grid based on Utah coordinate system, central zone

Dashed land lines indicate approximate locations

Unchecked elevations are shown in brown

SCALE 1:62,500



CONTOUR INTERVAL 40 FEET
DOTTED LINES REPRESENT HALF-INTERVAL CONTOURS
DATUM IS MEAN SEA LEVEL

USGS
HISTORICAL FILE
TOPOGRAPHIC DIVISION

ROAD CLASSIFICATION
Heavy-duty 4 LANE 16 LANE Light-duty
Medium-duty 4 LANE 16 LANE Unimproved dirt

U. S. Route State Route



QUADRANGLE LOCATION

DUGWAY RANGE, UTAH
N3945-W11300/15

U.S.G.S.
FILE COPY
TOPOGRAPHIC DIVISION

1953

DEC 15 1955

3155

FOR SALE BY U. S. GEOLOGICAL SURVEY, FEDERAL CENTER, DENVER, COLORADO OR WASHINGTON 25, D. C.
A FOLDER DESCRIBING TOPOGRAPHIC MAPS AND SYMBOLS IS AVAILABLE ON REQUEST