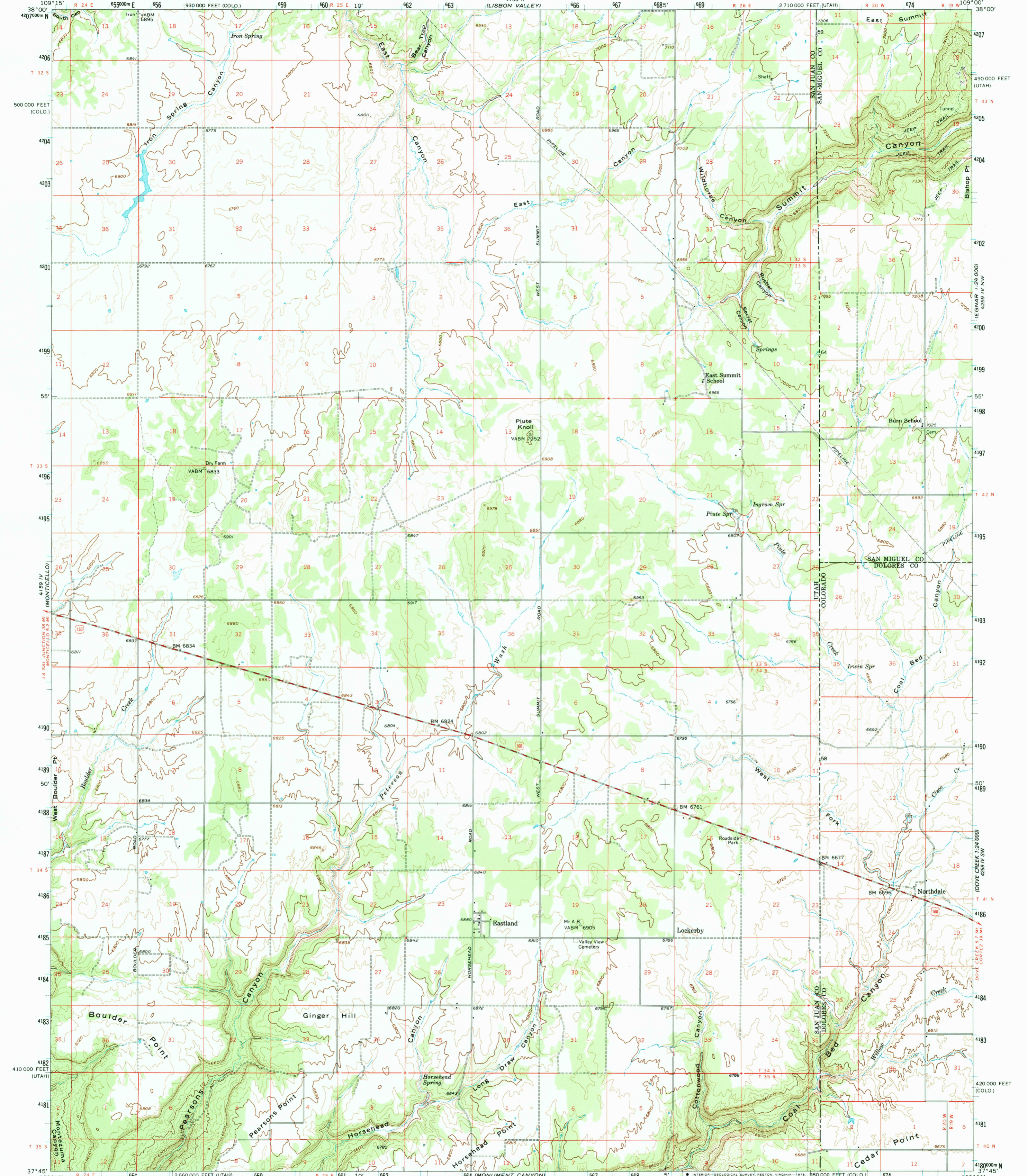
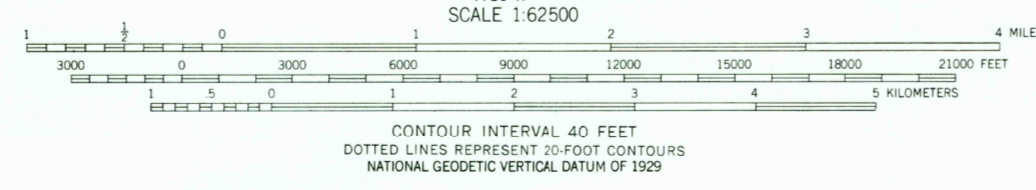
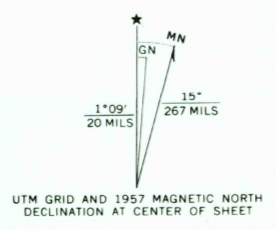


UNITED STATES
DEPARTMENT OF THE INTERIOR
GEOLOGICAL SURVEY

EASTLAND QUADRANGLE
UTAH-COLORADO
15 MINUTE SERIES (TOPOGRAPHIC)



Maped, edited, and published by the Geological Survey with cooperation by the Atomic Energy Commission Control by USGS and USC&GS
Topography from aerial photographs by photogrammetric methods
Aerial photographs taken 1953 and 1955
Advance field check 1954 and 1957
Polyconic projection. 1927 North American datum
10,000-foot grids based on Utah coordinate system, south zone and Colorado coordinate system, south zone
1000-meter Universal Transverse Mercator grid ticks, zone 12, shown in blue
Unchecked elevations are shown in brown



ROAD CLASSIFICATION
Medium-duty ——— Light-duty ———
Unimproved dirt - - - - -
U.S. Route

UTAH
QUADRANGLE LOCATION

EASTLAND, UTAH-COLO.
N3745-W10900/15
1957
AMS 4159 I-SERIES V797

THIS MAP COMPLIES WITH NATIONAL MAP ACCURACY STANDARDS
FOR SALE BY U.S. GEOLOGICAL SURVEY, DENVER, COLORADO 80225, OR RESTON, VIRGINIA 22092
A FOLDER DESCRIBING TOPOGRAPHIC MAPS AND SYMBOLS IS AVAILABLE ON REQUEST

RETURN TO:
USGS AND HISTORICAL MAP ARCHIVES

4200 II SW
RANGE MESA
1:24,000

4200 II SW
RANGE MESA
1:24,000

7-19-84