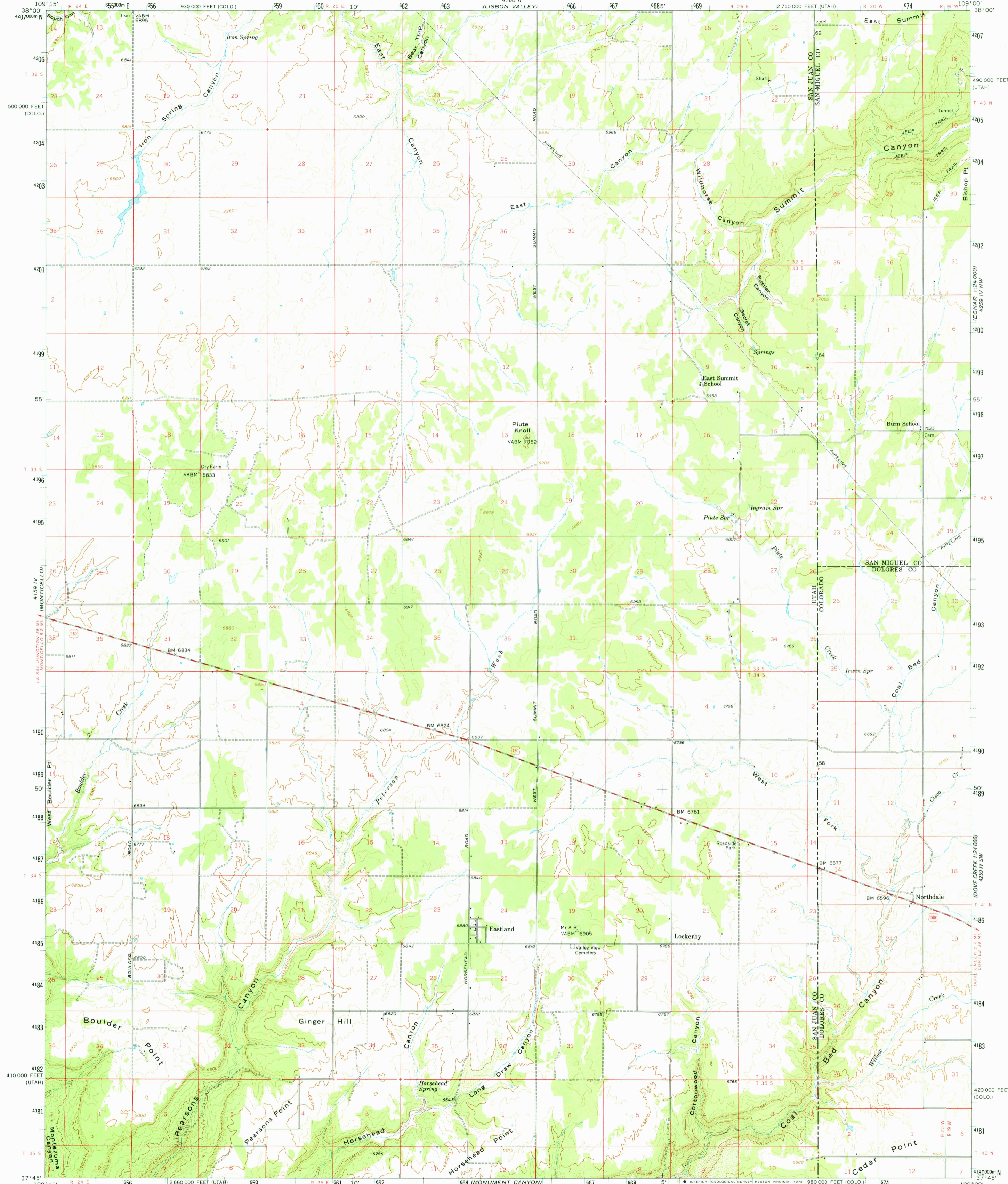
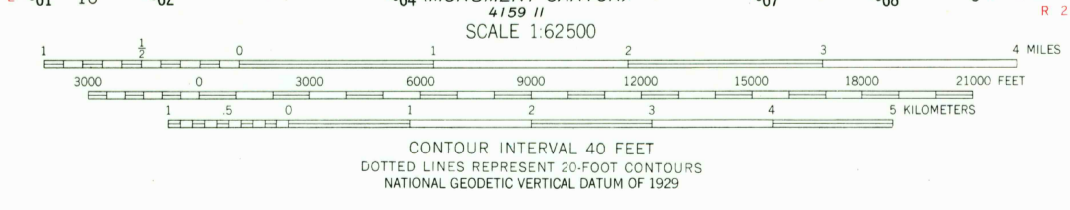
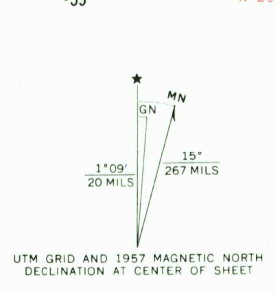


UNITED STATES
DEPARTMENT OF THE INTERIOR
GEOLOGICAL SURVEY

EASTLAND QUADRANGLE
UTAH-COLORADO
15 MINUTE SERIES (TOPOGRAPHIC)



Maped, edited, and published by the Geological Survey with cooperation by the Atomic Energy Commission Control by USGS and USC&GS
Topography from aerial photographs by photogrammetric methods
Aerial photographs taken 1953 and 1955
Advance field check 1954 and 1957
Polyconic projection. 1927 North American datum
10,000-foot grids based on Utah coordinate system, south zone and Colorado coordinate system, south zone
1000-meter Universal Transverse Mercator grid ticks, zone 12, shown in blue
Unchecked elevations are shown in brown



THIS MAP COMPLIES WITH NATIONAL MAP ACCURACY STANDARDS
FOR SALE BY U.S. GEOLOGICAL SURVEY, DENVER, COLORADO 80225, OR RESTON, VIRGINIA 22092
A FOLDER DESCRIBING TOPOGRAPHIC MAPS AND SYMBOLS IS AVAILABLE ON REQUEST

USGS
Historical File
Topographic Division

EASTLAND, UTAH-COLO.
N3745-W10900/15
1957
AMS 4159 I-SERIES V797

MAR 23 1978
2300