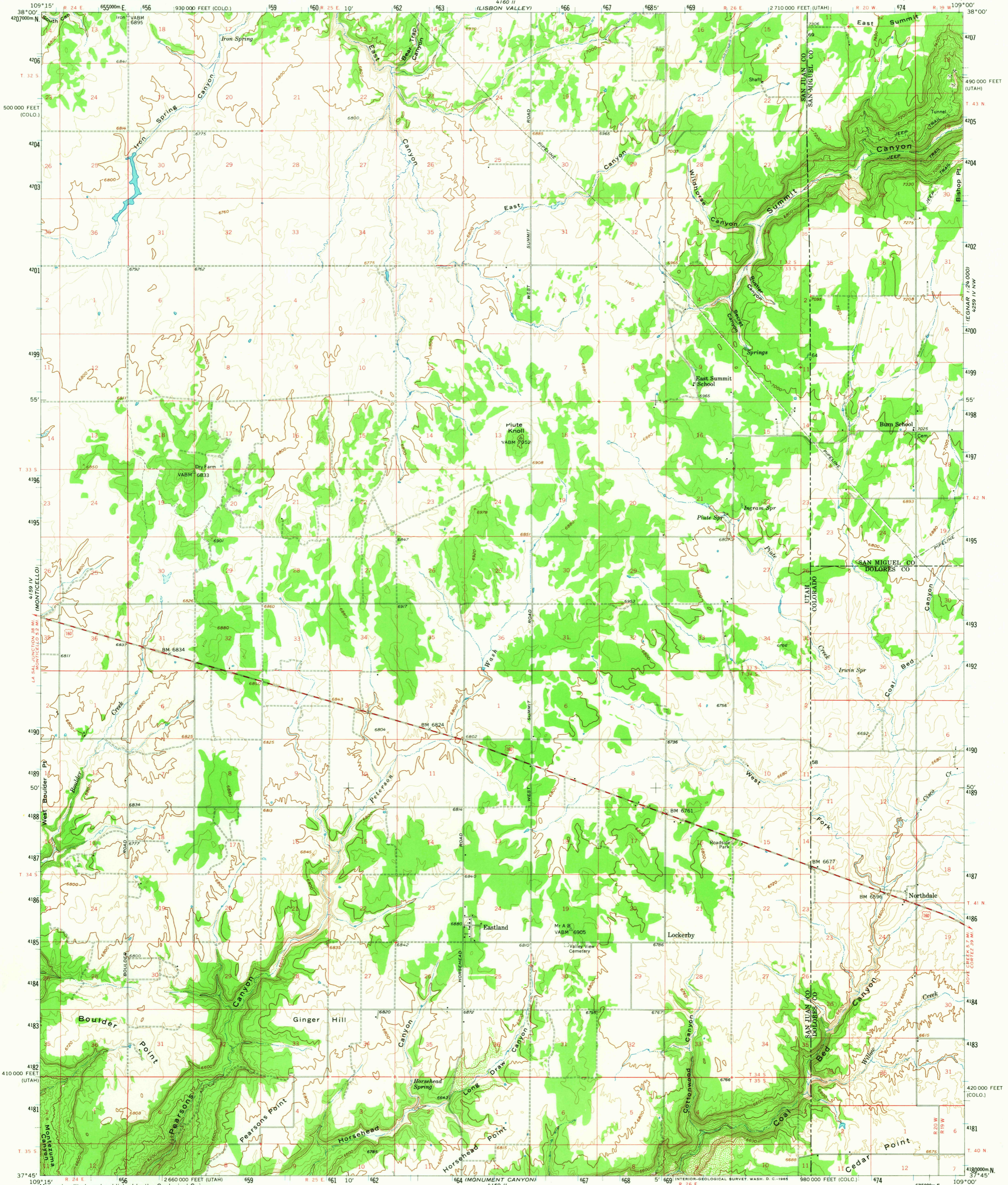


UNITED STATES
DEPARTMENT OF THE INTERIOR
GEOLOGICAL SURVEY

EASTLAND QUADRANGLE
UTAH-COLORADO
15 MINUTE SERIES (TOPOGRAPHIC)



4159 II (MONTICELLO)
4159 III (BLANDING)
4159 IV (MONTICELLO)
4159 V (MONTICELLO)
4159 VI (MONTICELLO)
4159 VII (MONTICELLO)
4159 VIII (MONTICELLO)
4159 IX (MONTICELLO)
4159 X (MONTICELLO)
4159 XI (MONTICELLO)
4159 XII (MONTICELLO)
4159 XIII (MONTICELLO)
4159 XIV (MONTICELLO)
4159 XV (MONTICELLO)
4159 XVI (MONTICELLO)
4159 XVII (MONTICELLO)
4159 XVIII (MONTICELLO)
4159 XIX (MONTICELLO)
4159 XX (MONTICELLO)
4159 XXI (MONTICELLO)
4159 XXII (MONTICELLO)
4159 XXIII (MONTICELLO)
4159 XXIV (MONTICELLO)
4159 XXV (MONTICELLO)
4159 XXVI (MONTICELLO)
4159 XXVII (MONTICELLO)
4159 XXVIII (MONTICELLO)
4159 XXIX (MONTICELLO)
4159 XXX (MONTICELLO)

Maped, edited, and published by the Geological Survey with cooperation by the Atomic Energy Commission Control by USGS and USC&GS
Topography from aerial photographs by photogrammetric methods
Aerial photographs taken 1953 and 1955.
Advance field check 1954 and 1957
Polyconic projection. 1927 North American datum
10,000-foot grids based on Utah coordinate system, south zone and Colorado coordinate system, south zone
1000-meter Universal Transverse Mercator grid ticks, zone 12, shown in blue
Unchecked elevations are shown in brown

SCALE 1:62,500
CONTOUR INTERVAL 40 FEET
DOTTED LINES REPRESENT 20-FOOT CONTOURS
DATUM IS MEAN SEA LEVEL

USGS HISTORICAL FILE TOPOGRAPHIC DIVISION
ROAD CLASSIFICATION
Medium duty — Light-duty
Unimproved dirt — U.S. Route

U.S.G.S. EASTLAND, UTAH-COLO. N3745-W10900/15
1957
AMS 4159 I-SERIES V797

OCT 41965
2925

THIS MAP COMPLIES WITH NATIONAL MAP ACCURACY STANDARDS
FOR SALE BY U. S. GEOLOGICAL SURVEY, DENVER, COLORADO 80225, OR WASHINGTON, D. C. 20242
A FOLDER DESCRIBING TOPOGRAPHIC MAPS AND SYMBOLS IS AVAILABLE ON REQUEST