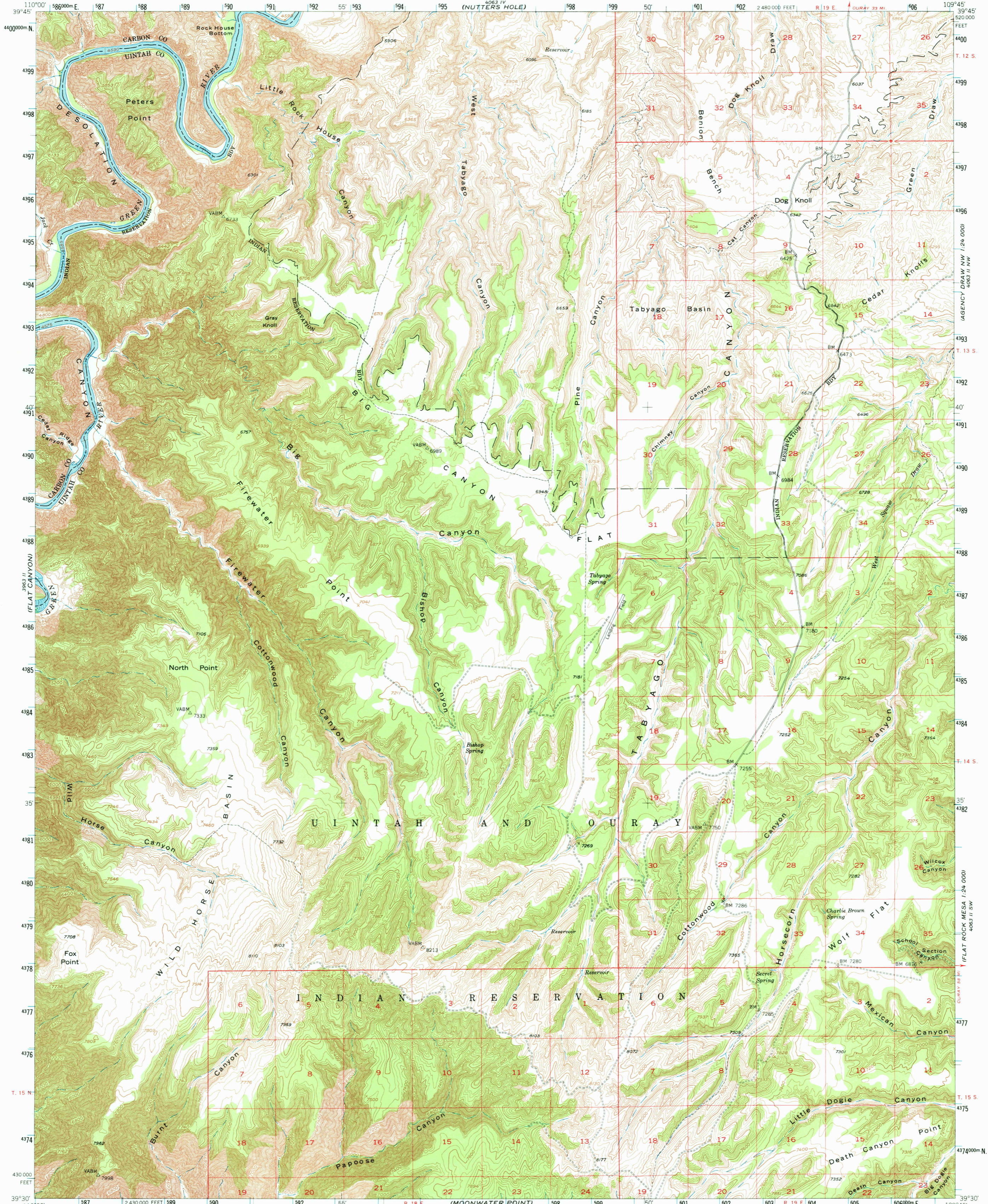
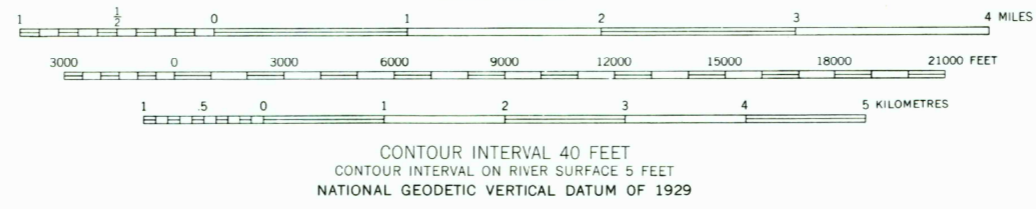
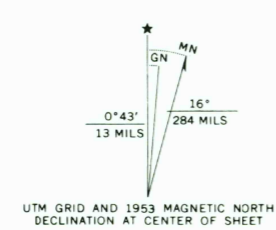


UNITED STATES
DEPARTMENT OF THE INTERIOR
GEOLOGICAL SURVEY

FIREWATER CANYON QUADRANGLE
UTAH
15 MINUTE SERIES (TOPOGRAPHIC)



Mapped, edited, and published by the Geological Survey
Control by USGS and USC&GS
Topography from aerial photographs by multiplex methods
Aerial photographs taken 1951. Advance field check 1953
Polyconic projection. 1927 North American datum
10,000-foot grid based on Utah coordinate system, central zone
Unchecked elevations are shown in brown
1000-metre Universal Transverse Mercator grid ticks,
zone 12, shown in blue



ROAD CLASSIFICATION
Heavy-duty 4 LANE 6 LANE Light-duty
Medium-duty 4 LANE 6 LANE Unimproved dirt
U.S. Route State Route

FIREWATER CANYON, UTAH
N3930-W10945/15

1953
AMS 4063 III-SERIES V797

THIS MAP COMPLIES WITH NATIONAL MAP ACCURACY STANDARDS
FOR SALE BY U.S. GEOLOGICAL SURVEY, DENVER, COLORADO 80225, OR RESTON, VIRGINIA 22092
A FOLDER DESCRIBING TOPOGRAPHIC MAPS AND SYMBOLS IS AVAILABLE ON REQUEST