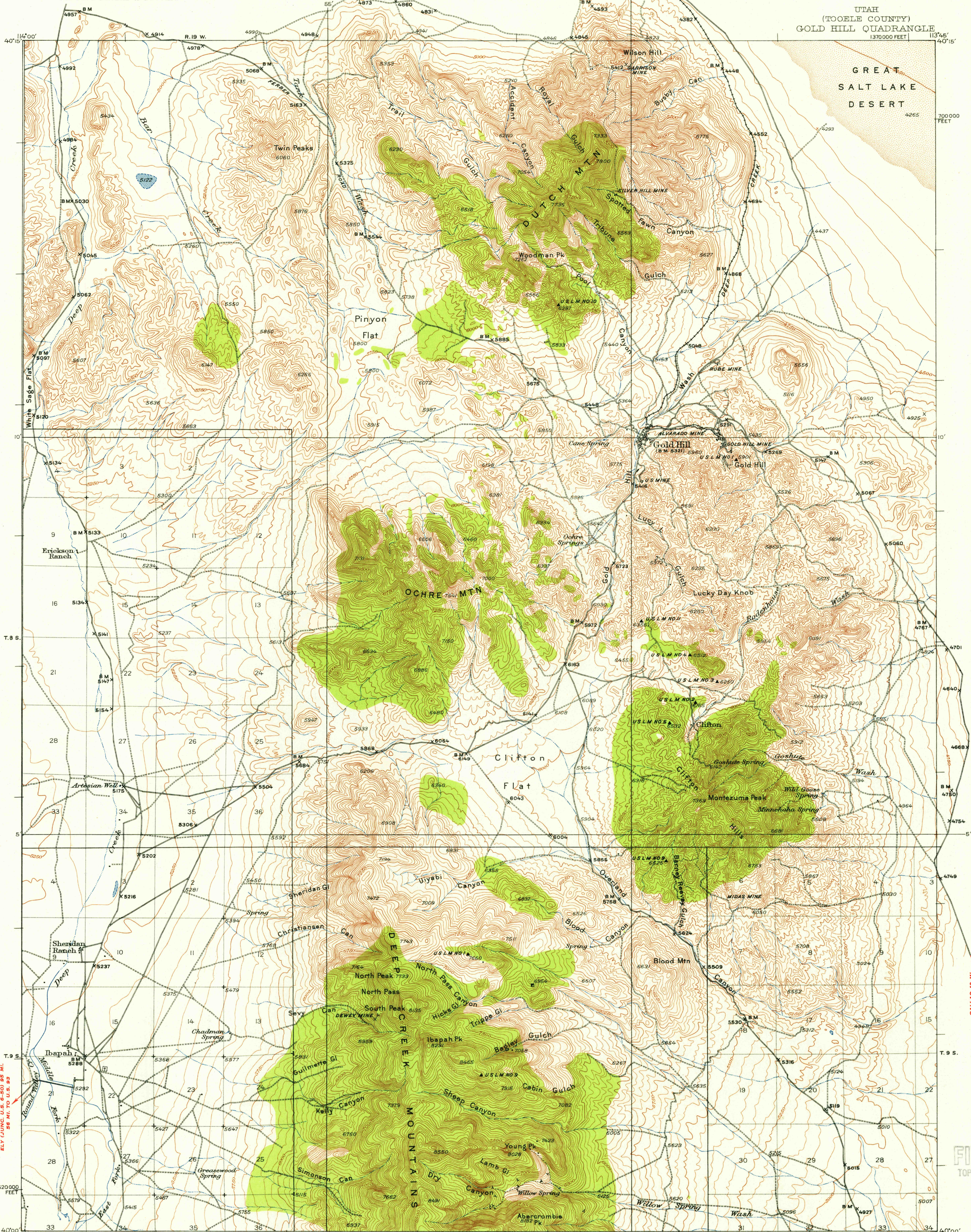


UTAH
(TOOELE COUNTY)
GOLD HILL QUADRANGLE
1370000 FEET



Topography by R.T. Evans, W.J. Lloyd, E.S. Rickard, H.S. Milsted, and S.L. Parker
Control by U.S. Geological Survey and U.S. Coast and Geodetic Survey
Surveyed in 1924-1925

SCALE 1:62500

CONTOUR INTERVAL 50 FEET
DATUM IS MEAN SEA LEVEL

FOR SALE BY U.S. GEOLOGICAL SURVEY, FEDERAL CENTER, DENVER, COLORADO OR WASHINGTON 25, D.C.
A FOLDER DESCRIBING TOPOGRAPHIC MAPS AND SYMBOLS IS AVAILABLE ON REQUEST

USGS
Historical File
Topographic Division

GOLD HILL, UTAH
N4000-W11345/15
1925

JUN 2 1 1955

2660