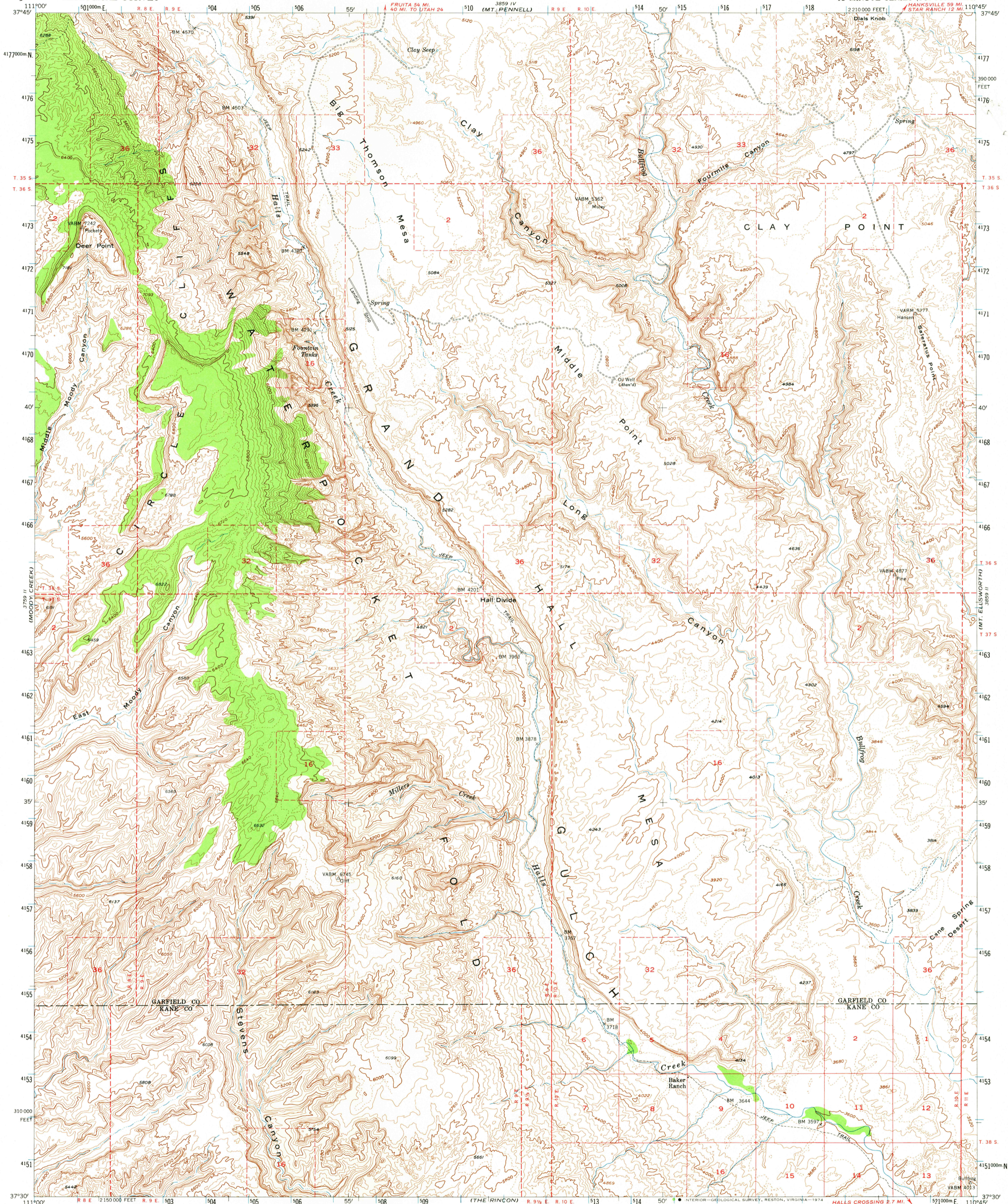
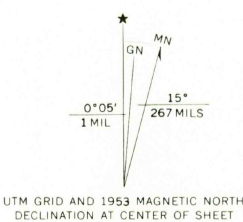


UNITED STATES
DEPARTMENT OF THE INTERIOR
GEOLOGICAL SURVEY

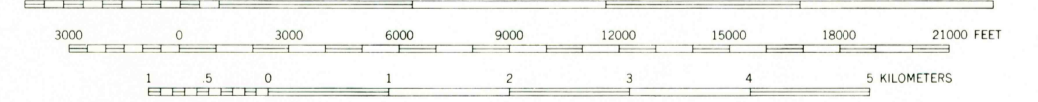
HALL MESA QUADRANGLE
UTAH
15 MINUTE SERIES (TOPOGRAPHIC)



Mapped, edited, and published by the Geological Survey
Control by USGS and USC&GS
Topography from aerial photographs by multiplex methods
Aerial photographs taken 1951. Advance field check 1953
Polyconic projection. 1927 North American datum
10,000-foot grid based on Utah coordinate system, south zone
Unchecked elevations are shown in brown
1000-meter Universal Transverse Mercator grid ticks,
zone 12, shown in blue



SCALE 1:62,500



CONTOUR INTERVAL 80 FEET
DASHED LINES REPRESENT 40 FOOT CONTOURS
NATIONAL GEODETIC VERTICAL DATUM OF 1929

THIS MAP COMPLIES WITH NATIONAL MAP ACCURACY STANDARDS
FOR SALE BY U.S. GEOLOGICAL SURVEY, DENVER, COLORADO 80225, OR RESTON, VIRGINIA 22092
A FOLDER DESCRIBING TOPOGRAPHIC MAPS AND SYMBOLS IS AVAILABLE ON REQUEST



ROAD CLASSIFICATION
1963
Unimproved dirt -----

HALL MESA, UTAH
N3730-W11045/15

1953

AMS 3859 III--SERIES V797

USGS
Historical File
Topographic Division

NOV 0 4 1974

WAGON BOX MESA
WING MESA (24 0000)
930 1 NE

MT. HILLES
MT. ELLSWORTH
LAKE CANYON

2950