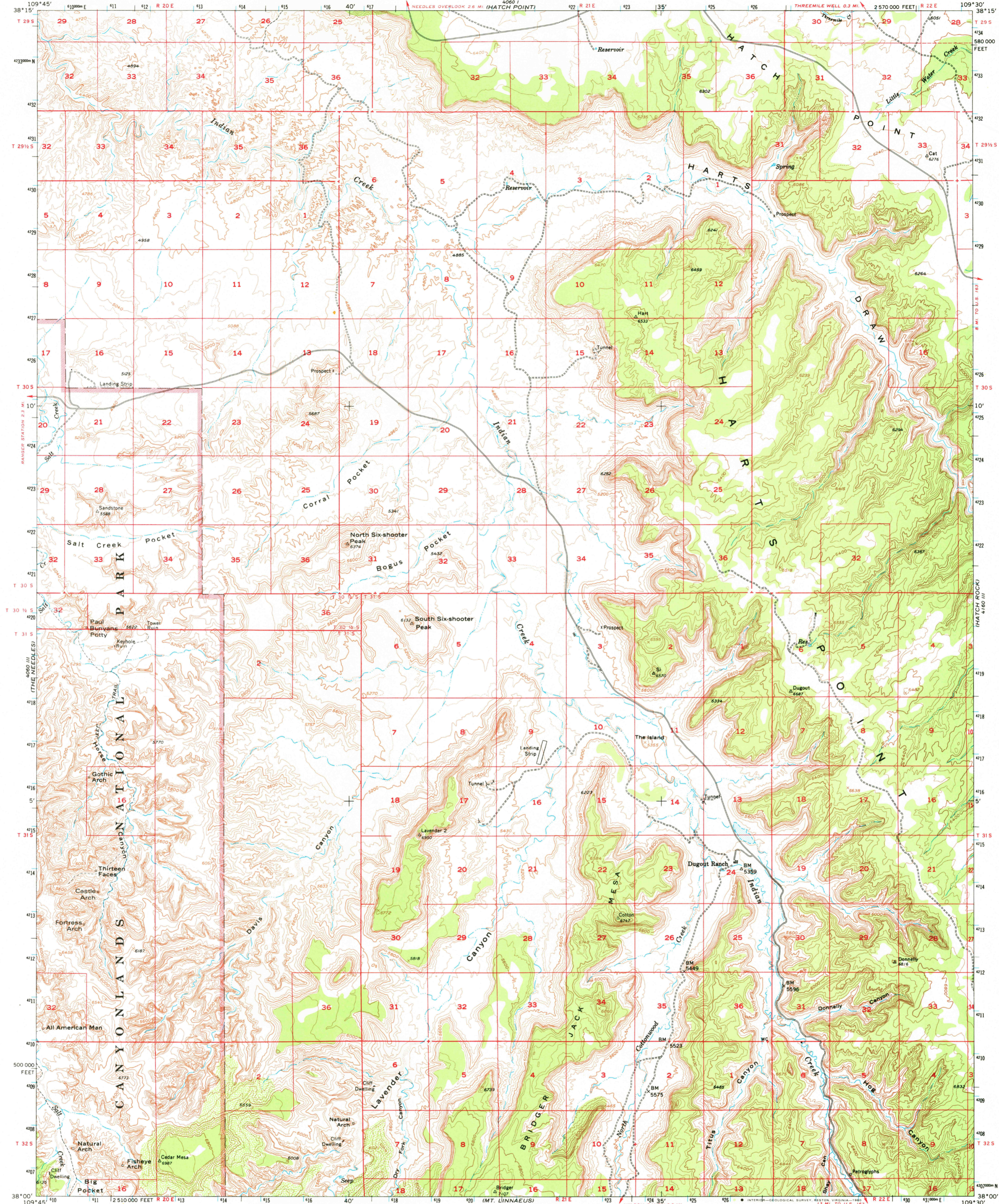
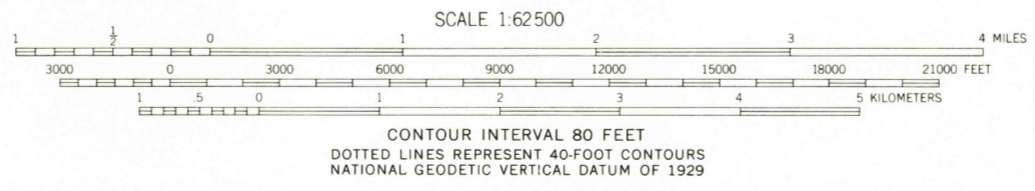
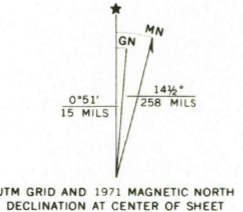




109° 45' W
38° 15' N



Mapped, edited, and published by the Geological Survey with cooperation by the Atomic Energy Commission Control by USGS and USC&GS
Topography from aerial photographs by multiplex methods Aerial photographs taken 1953. Advance field check 1954
Polyconic projection. 1927 North American datum 10,000-foot grid based on Utah coordinate system, south zone
1000-meter Universal Transverse Mercator grid ticks, zone 12, shown in blue
Dashed land lines indicate approximate locations
Unchecked elevations are shown in brown
There may be private inholdings within the boundaries of the National or State reservations shown on this map



CONTOUR INTERVAL 80 FEET
DOTTED LINES REPRESENT 40-FOOT CONTOURS
NATIONAL GEODETIC VERTICAL DATUM OF 1929
THIS MAP COMPLIES WITH NATIONAL MAP ACCURACY STANDARDS
FOR SALE BY U.S. GEOLOGICAL SURVEY, DENVER, COLORADO 80225, OR RESTON, VIRGINIA 22092
A FOLDER DESCRIBING TOPOGRAPHIC MAPS AND SYMBOLS IS AVAILABLE ON REQUEST



ROAD CLASSIFICATION
Light-duty ———
Unimproved dirt - - - - -

HARTS POINT, UTAH
N3800—W10930/15

USGS
Historical File
Topographic Division

1954
MINOR CORRECTIONS MADE 1971
DMA 4060 II—SERIES V797

APR - 9 1980

3300