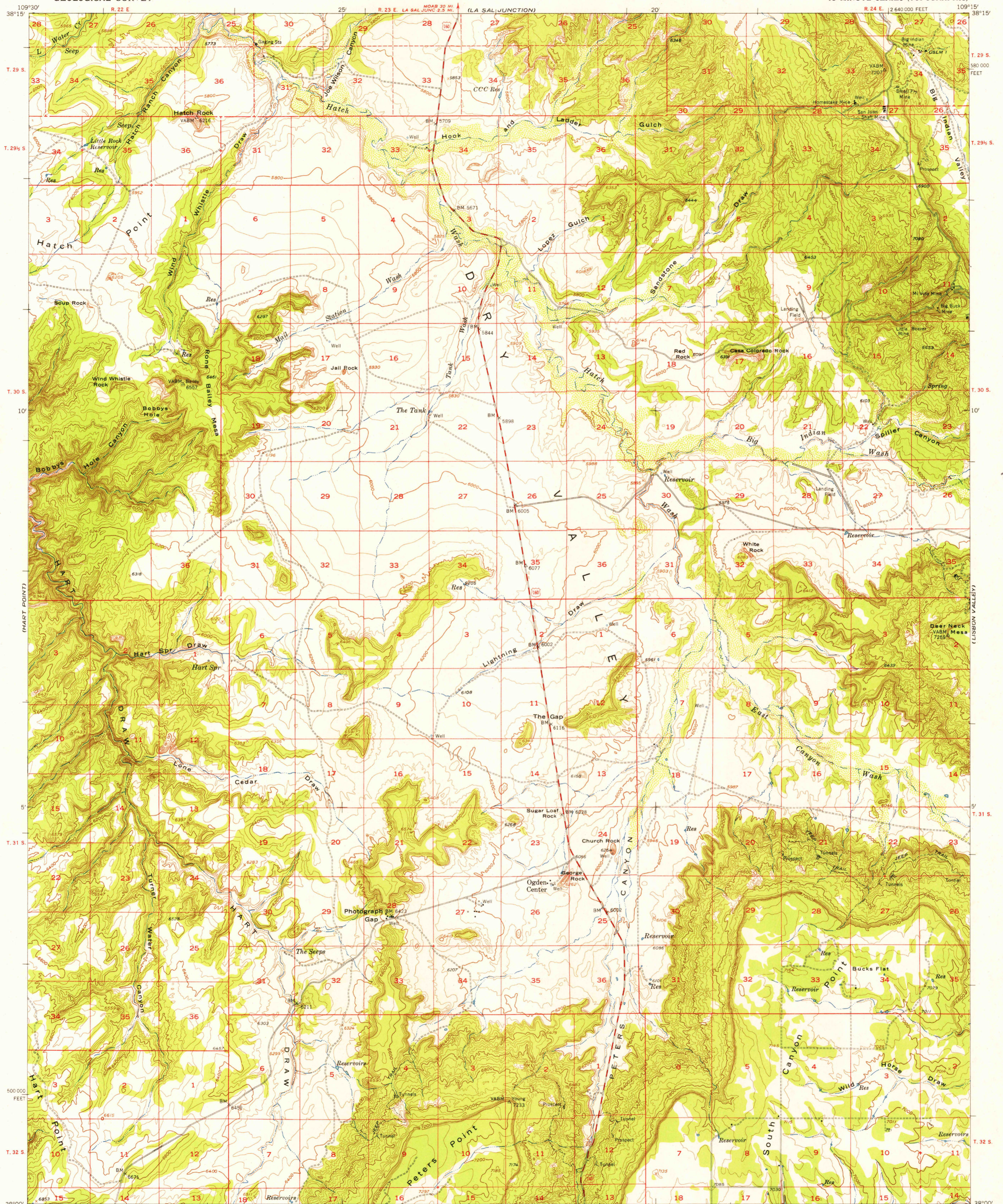
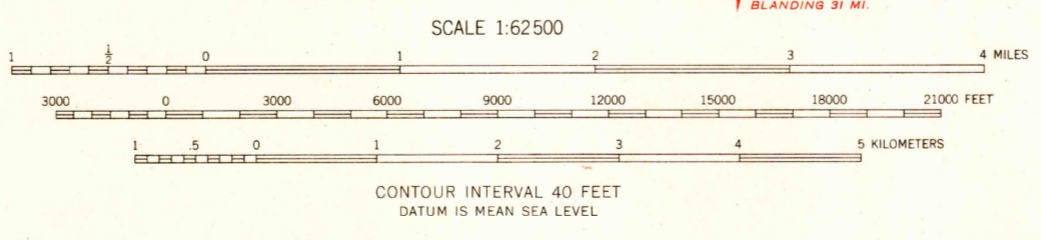


(LA SAL)

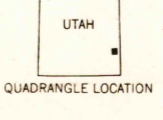


U.S.G.S.
FILE COPY
TOPOGRAPHIC DIVISION

Mapped, edited, and published by the Geological Survey
Control by USGS and USC&GS
Topography from aerial photographs by multiplex methods
Aerial photographs taken 1953. Advance field check 1954
Polyconic projection. 1927 North American datum
10,000-foot grid based on Utah coordinate system, south zone
Dashed land lines indicate approximate locations
Unchecked elevations are shown in brown



USGS
Historical File
Topographic Division
ROAD CLASSIFICATION
Heavy-duty ——— Light-duty ———
Medium-duty ——— Unimproved dirt ———
U.S. Route ——— State Route ———



U.S.G.S.
FILE COPY
TOPOGRAPHIC DIVISION

HATCH ROCK, UTAH
N 3800—W 10915/15
1954

MAR 19 1957

THIS MAP COMPLIES WITH NATIONAL MAP ACCURACY STANDARDS
FOR SALE BY U. S. GEOLOGICAL SURVEY, DENVER 2, COLORADO OR WASHINGTON 25, D. C.
A FOLDER DESCRIBING TOPOGRAPHIC MAPS AND SYMBOLS IS AVAILABLE ON REQUEST

2570