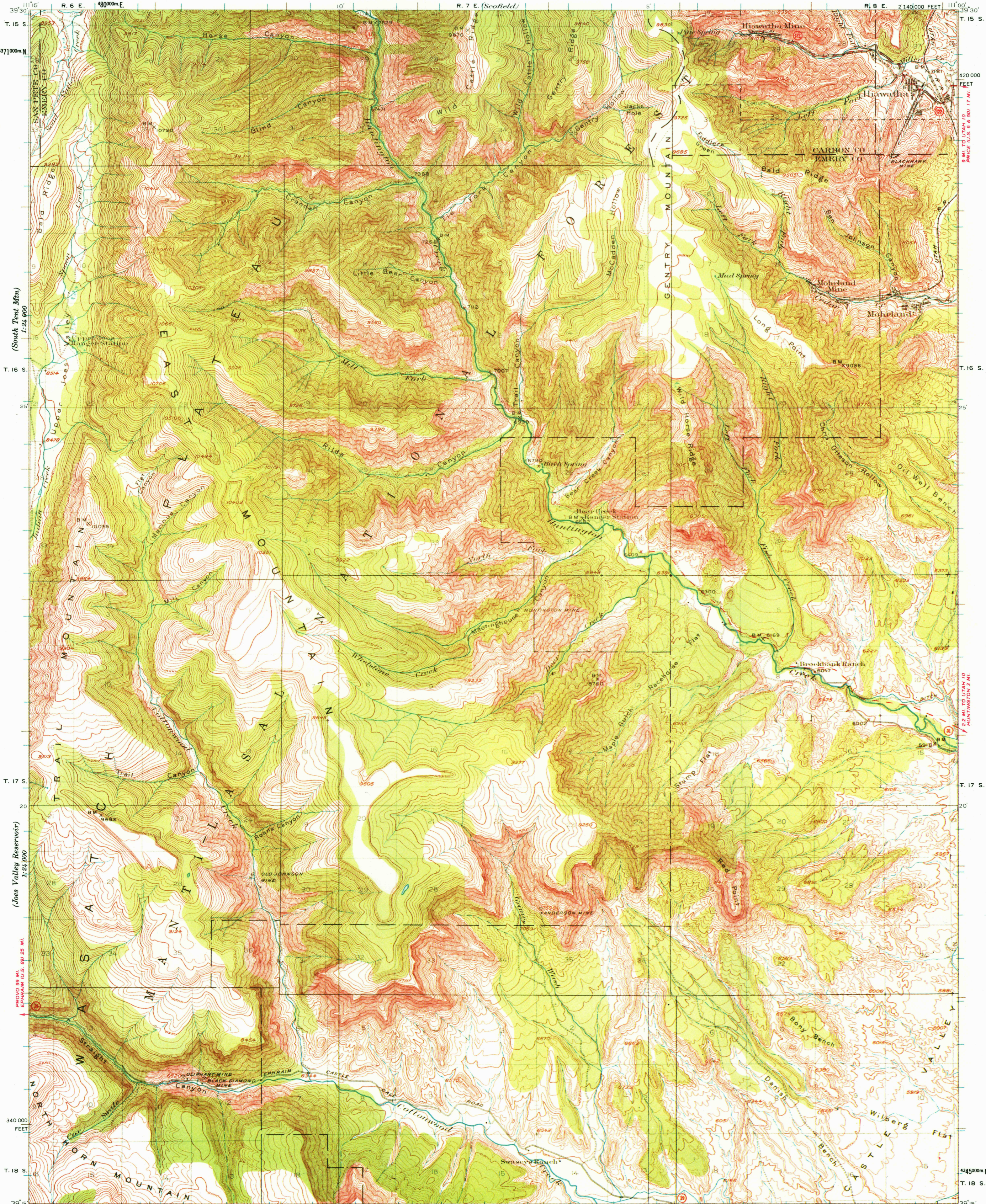
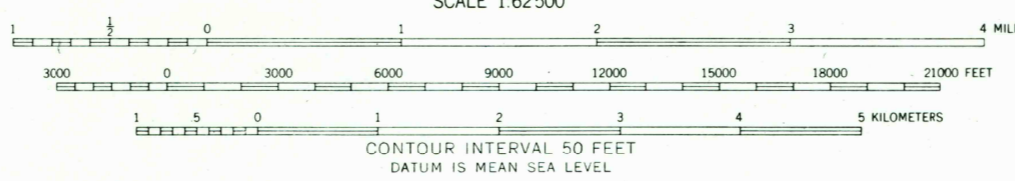


UNITED STATES
DEPARTMENT OF THE INTERIOR
GEOLOGICAL SURVEY

UTAH
HIAWATHA QUADRANGLE



Topography by W.B. Upton, Jr. and E.B. Hill,
Surveyed in 1921 and 1923.



ROAD CLASSIFICATION
 Heavy-duty ——— Light-duty ———
 Medium-duty - - - - - Unimproved dirt - - - - -
 U. S. Route State Route

HIAWATHA, UTAH
N 3915-W 11100/15

1923

FOR SALE BY U. S. GEOLOGICAL SURVEY, DENVER, COLORADO 80225 OR WASHINGTON, D. C. 20242
A FOLDER DESCRIBING TOPOGRAPHIC MAPS AND SYMBOLS IS AVAILABLE ON REQUEST

This map was reproduced by electronic color scanning of an earlier printing (1972).

RETURN TO:
USGS AND HISTORICAL MAP ARCHIVES

(Huntington Reservoir)
1:24,000

(Castle Gate)

(Joe's Valley Reservoir)
1:24,000

(Feyron Canyon)
1:24,000