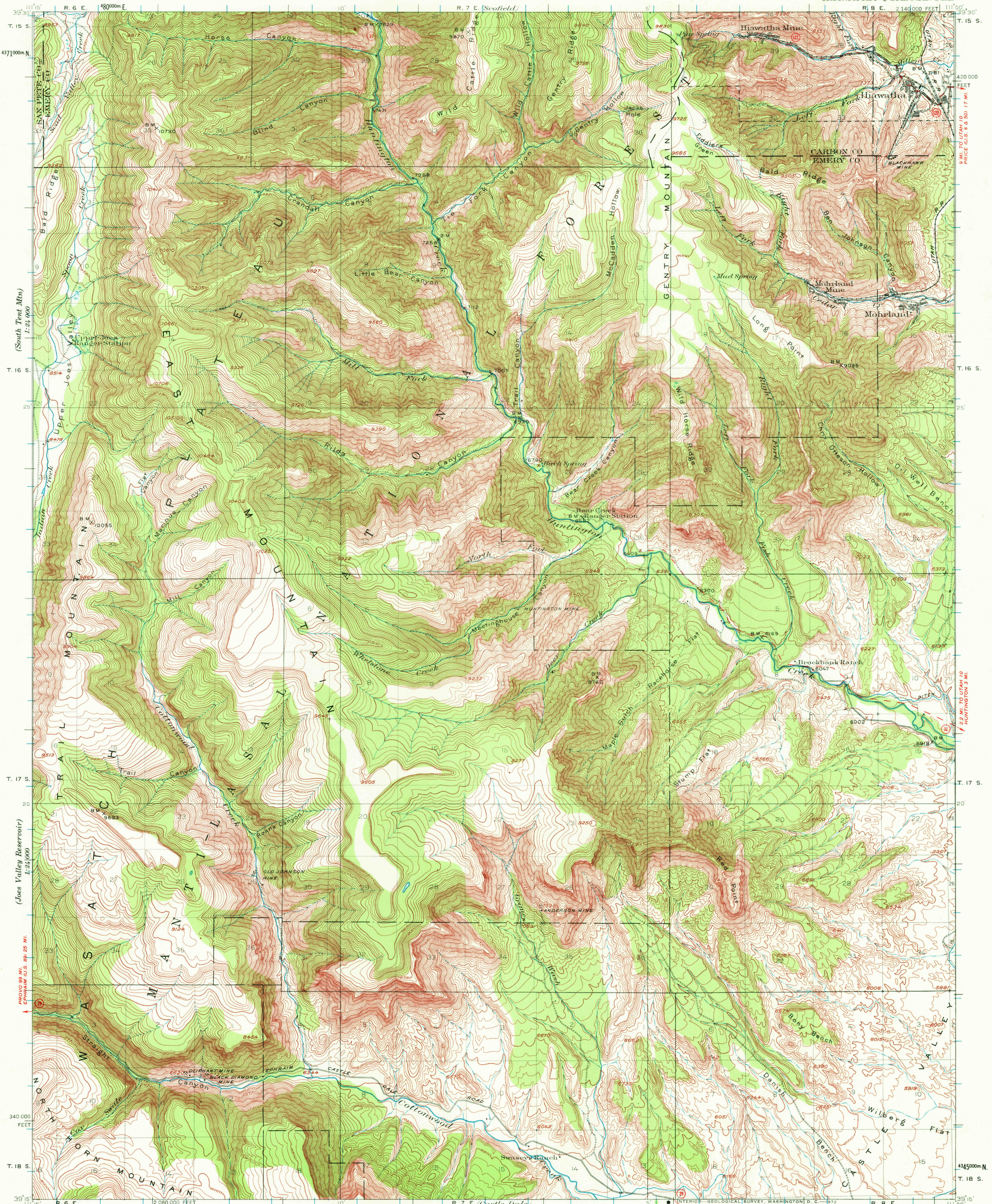


(Huntington Reservoir)  
1:24,000

UNITED STATES  
DEPARTMENT OF THE INTERIOR  
GEOLOGICAL SURVEY

UTAH  
HIAWATHA QUADRANGLE

(Castle Gate)



(South Tent Min)  
1:24,000

(Joos Valley Reservoir)  
1:24,000

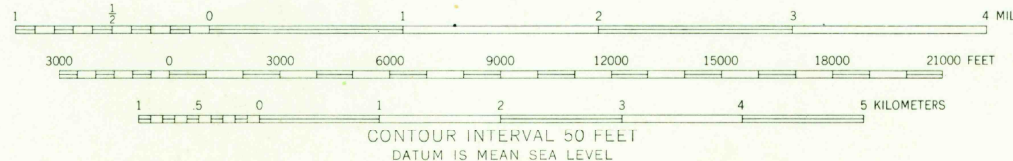
PROVO 89 MI.  
EPHRAIM U.S. 89 25 MI.

340 000  
FEET

(Perron Canyon)  
1:24,000

Topography by W.B. Upton, Jr. and E.B. Hill.  
Surveyed in 1921 and 1923.

SCALE 1:62,500



ROAD CLASSIFICATION

Heavy-duty	Light-duty
Medium-duty	Unimproved dirt
U.S. Route	State Route

APPROXIMATE MEAN  
DECLINATION, 1923

Polyconic projection. To place on 1927 North American datum  
move projection lines 80 feet north and 60 feet west  
10,000-foot grid based on Utah (Central)  
rectangular coordinate system  
1000-meter Universal Transverse Mercator grid ticks,  
zone 12, shown in blue

HIAWATHA, UTAH  
N 3915-W 11100/15

1923

FOR SALE BY U. S. GEOLOGICAL SURVEY, DENVER, COLORADO 80225 OR WASHINGTON, D. C. 20242  
A FOLDER DESCRIBING TOPOGRAPHIC MAPS AND SYMBOLS IS AVAILABLE ON REQUEST

USGS  
HISTORICAL FILE  
TOPOGRAPHIC DIVISION

OCT 26 1972

3585