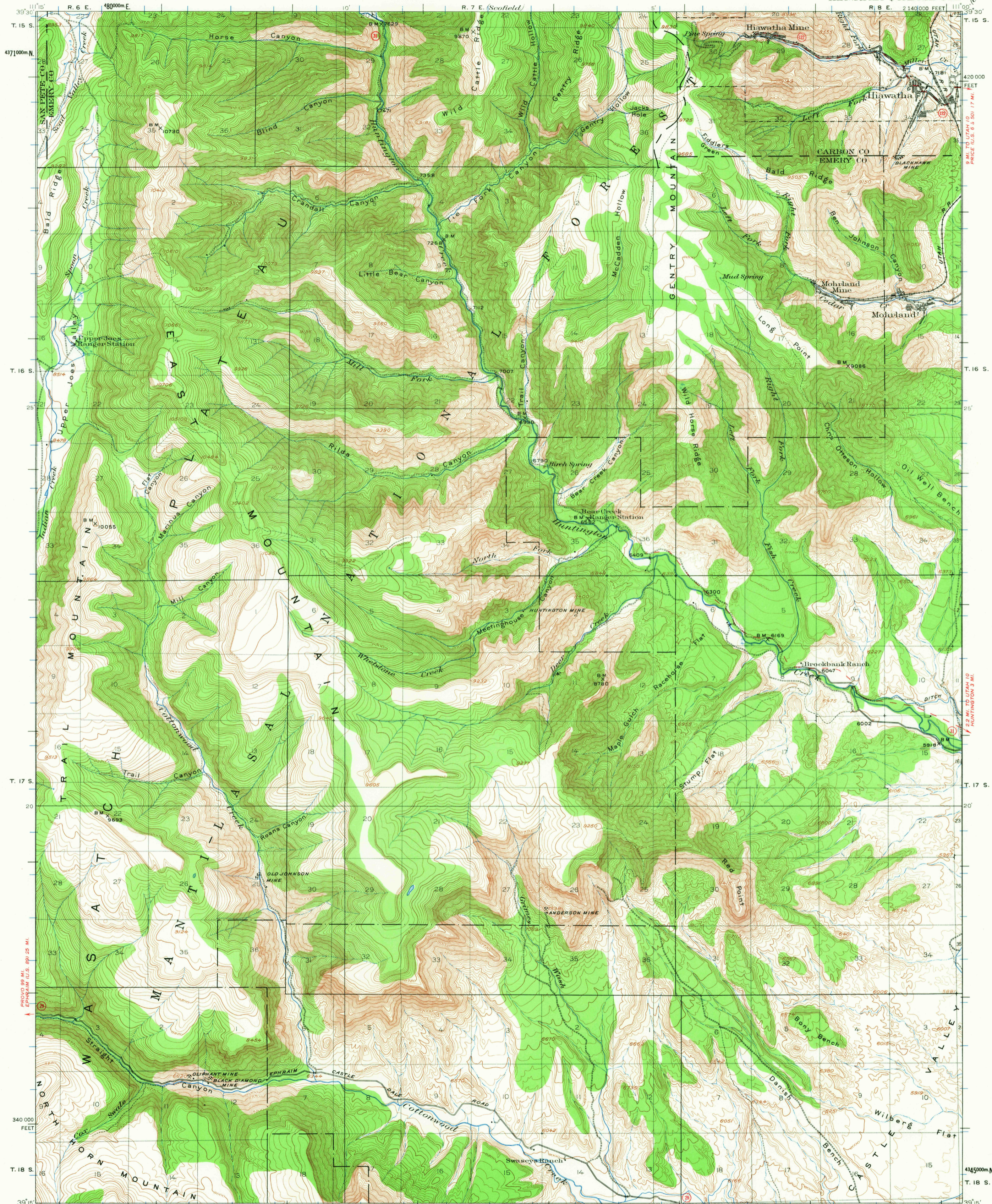


UNITED STATES
DEPARTMENT OF THE INTERIOR
GEOLOGICAL SURVEY

UTAH
HIAWATHA QUADRANGLE



Topography by W.B. Upton, Jr. and E.B. Hill.
Surveyed in 1921 and 1923.

SCALE 1:62500

Polyconic projection. To place on 1927 North American datum
move projection lines 80 feet north and 60 feet west
10,000-foot grid based on Utah (Central)
rectangular coordinate system
1000-meter Universal Transverse Mercator grid ticks,
zone 12, shown in blue

- ROAD CLASSIFICATION
- Heavy-duty ——— Light-duty ———
 - Medium-duty ——— Unimproved dirt ———
 - U.S. Route ——— State Route ———



CONTOUR INTERVAL 50 FEET
DATUM IS MEAN SEA LEVEL

FOR SALE BY U. S. GEOLOGICAL SURVEY, DENVER, COLORADO 80225 OR WASHINGTON, D. C. 20242
A FOLDER DESCRIBING TOPOGRAPHIC MAPS AND SYMBOLS IS AVAILABLE ON REQUEST

U.S.G.S. HIAWATHA, UTAH
USGS N 3915-W 11100/15
Historical File 1923
Topographic Division
1535
JUN 9 1967