

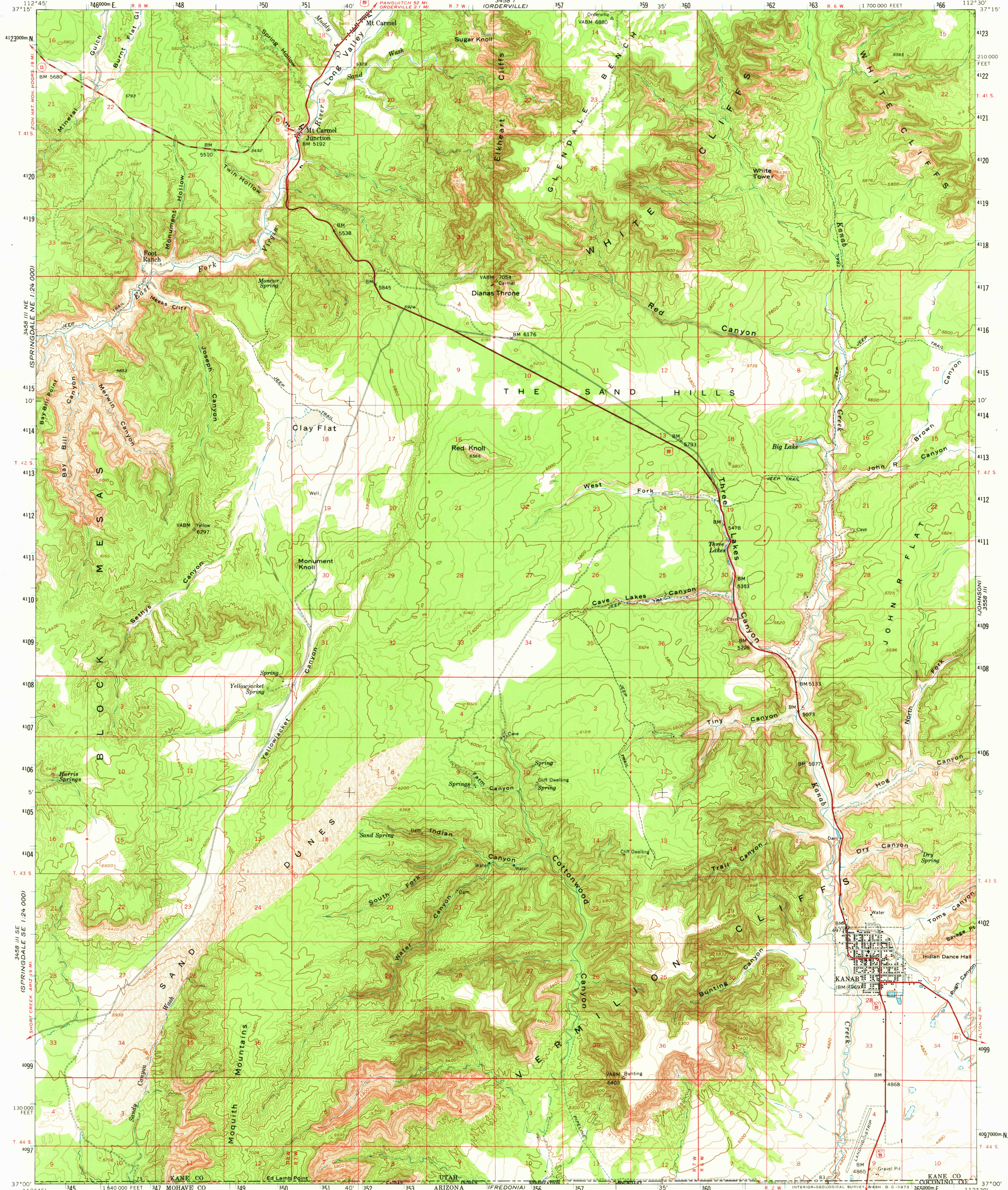
3458 IV SE
ORDERVILLE CANYON
1:24,000

3558 IV SE
BALD KNOLL
1:24,000

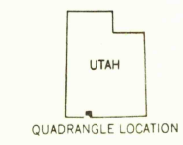
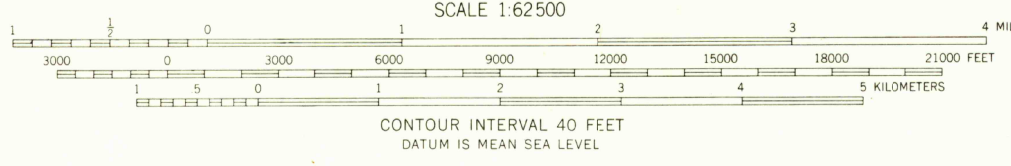
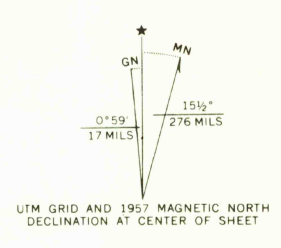
UNITED STATES
DEPARTMENT OF THE INTERIOR
GEOLOGICAL SURVEY

UNITED STATES
ATOMIC ENERGY COMMISSION

KANAB QUADRANGLE
UTAH-ARIZONA
15 MINUTE SERIES (TOPOGRAPHIC)



Mapped, edited, and published by the Geological Survey
Control by USGS and USC&GS
Topography from aerial photographs by photogrammetric methods
Aerial photographs taken 1953 and 1955. Advance field check
1954 and 1957
Polyconic projection: 1927 North American datum
10,000-foot grid based on Utah coordinate system, south zone
1000-meter Universal Transverse Mercator grid ticks,
zone 12, shown in blue
Land lines unsurveyed in T. 42 S.-R. 8 W. and parts of T. 41 S.-
R. 6 W.
Unchecked elevations are shown in brown



ROAD CLASSIFICATION
Heavy-duty ——— Light-duty ———
Medium-duty ——— Unimproved dirt - - - - -
U. S. Route ——— State Route ———

THIS MAP COMPLIES WITH NATIONAL MAP ACCURACY STANDARDS
FOR SALE BY U. S. GEOLOGICAL SURVEY, DENVER, COLORADO 80225 OR WASHINGTON, D. C. 20242
A FOLDER DESCRIBING TOPOGRAPHIC MAPS AND SYMBOLS IS AVAILABLE ON REQUEST

KANAB, UTAH-ARIZ.
N3700-W11230/15
1957
AMS 3458 II-SERIES V797

2695
DEC 20 1972