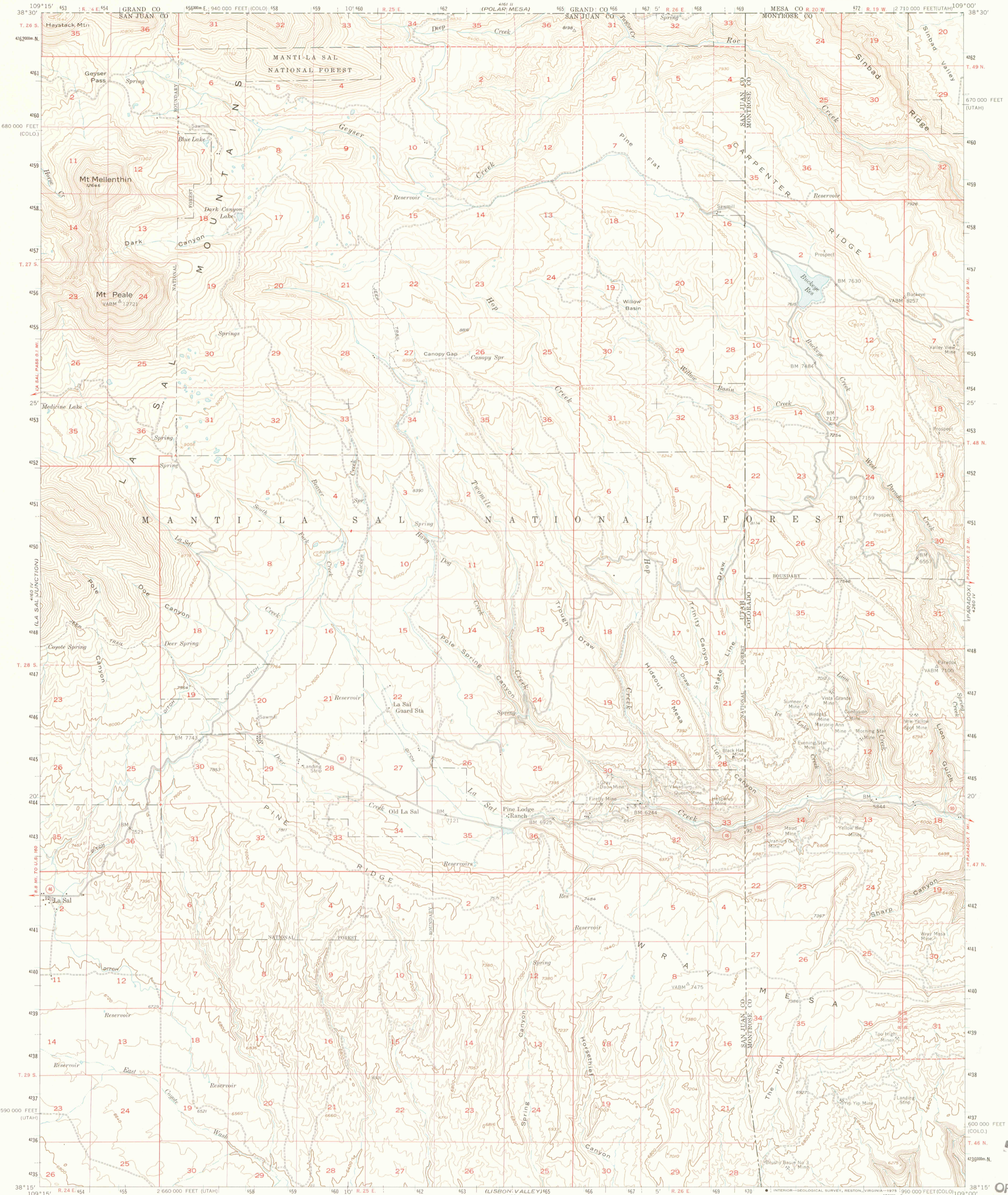
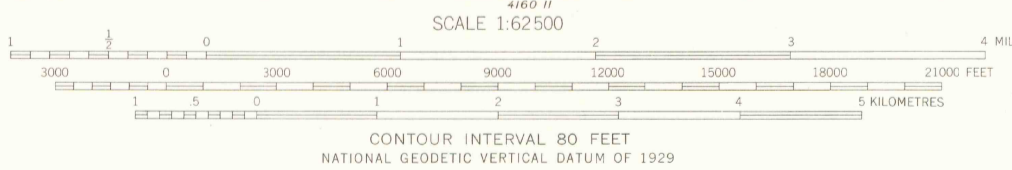
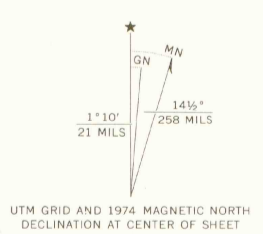


UNITED STATES
DEPARTMENT OF THE INTERIOR
GEOLOGICAL SURVEY

LA SAL QUADRANGLE
UTAH-COLORADO
15 MINUTE SERIES (TOPOGRAPHIC)



Mapped, edited, and published by the Geological Survey
Control by USGS and NOS/NOAA
Topography from aerial photographs by multiple methods
Aerial photographs taken 1953. Advance field check 1954
Polyconic projection. 1927 North American datum
10,000-foot grids based on Utah coordinate system, south zone
and Colorado coordinate system, south zone
1000-metre Universal Transverse Mercator grid ticks,
zone 12, shown in blue
Dashed land lines indicate approximate locations



ROAD CLASSIFICATION

Heavy-duty	Light-duty
Medium-duty	Unimproved dirt
U.S. Route	State Route



LA SAL, UTAH-COLO.
N3815-W10900/15
1954
MINOR REVISIONS 1974
AMS 4160 I-SERIES V797

JUL 16 1999

WILLIAM H. HALL
ARTHUR L. AKES LIBRARY
COLORADO SCHOOL OF MINES

LIBRARY USE ONLY

OFFICE COPY

3701
C222
S62
U5