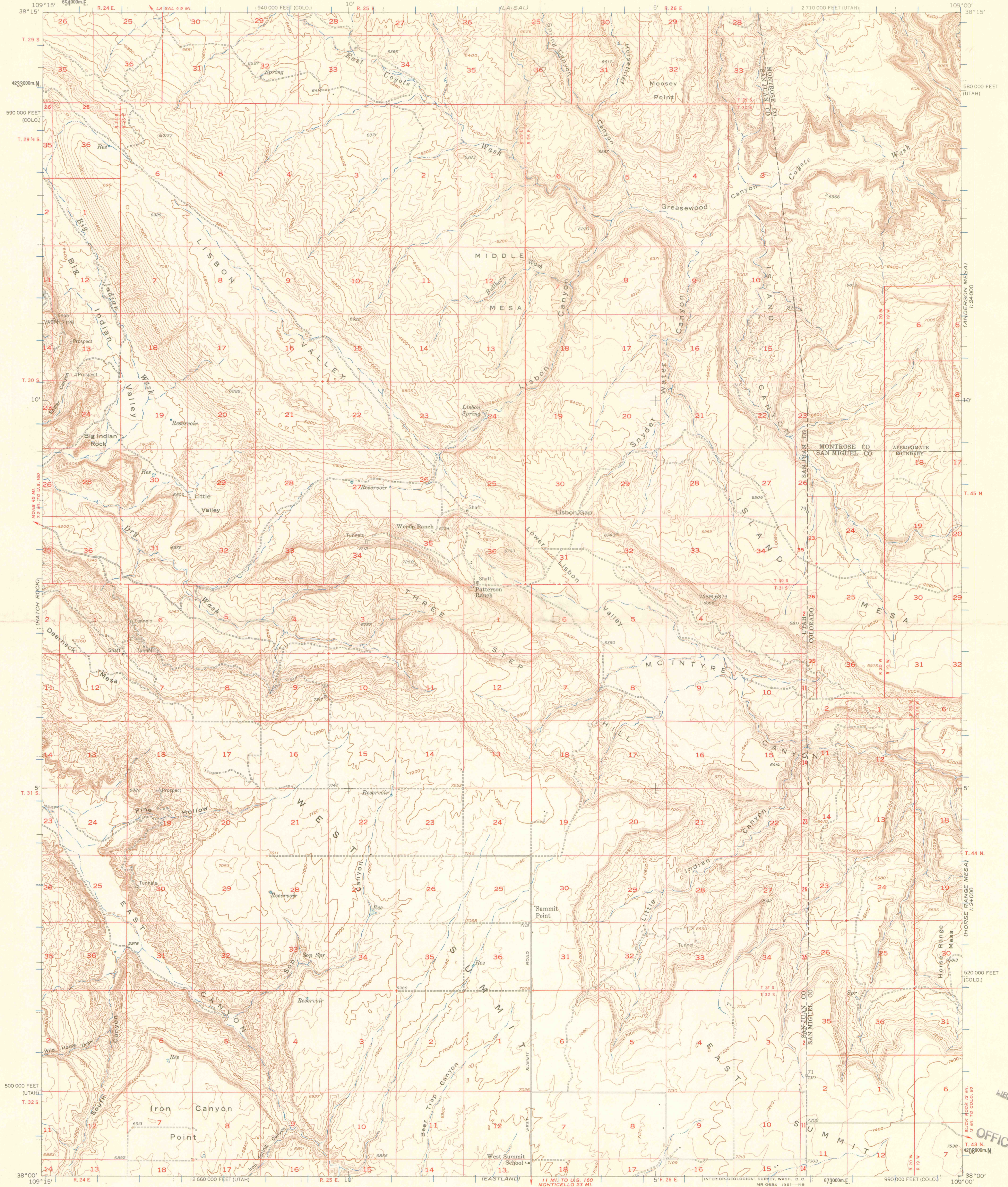


(LA SAL JUNCTION)

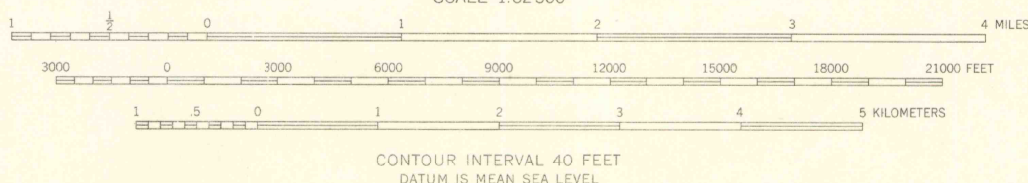
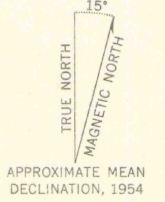
UNITED STATES
DEPARTMENT OF THE INTERIOR
GEOLOGICAL SURVEY

LISBON VALLEY QUADRANGLE
UTAH-COLORADO
15 MINUTE SERIES (TOPOGRAPHIC)

(PARADOXY)
1:24,000



Mapped, edited, and published by the Geological Survey
with cooperation by the Atomic Energy Commission
Control by USGS and USC&GS
Topography from aerial photographs by multiplex methods
Aerial photographs taken 1953. Advance field check 1954
Polyconic projection. 1927 North American datum
10,000-foot grids based on Utah coordinate system, south zone
and Colorado coordinate system, south zone
1000-meter Universal Transverse Mercator grid ticks,
zone 12, shown in blue
Dashed land lines indicate approximate locations
Unchecked elevations are shown in brown



CONTOUR INTERVAL 40 FEET
DATUM IS MEAN SEA LEVEL

ROAD CLASSIFICATION
Light-duty ————— Unimproved dirt ————
QUADRANGLE LOCATION JUL 16 1999 LISBON VALLEY, UTAH-COLO.
N3800-W10900/15
1954

THIS MAP COMPLIES WITH NATIONAL MAP ACCURACY STANDARDS
FOR SALE BY U. S. GEOLOGICAL SURVEY, DENVER 25, COLORADO OR WASHINGTON 25, D. C.
A FOLDER DESCRIBING TOPOGRAPHIC MAPS AND SYMBOLS IS AVAILABLE ON REQUEST

OFFICE COPY
1:43 N
1:43 W
4208000m N
1:24,000

LIBRARY USE ONLY

370
0222
s62
U5