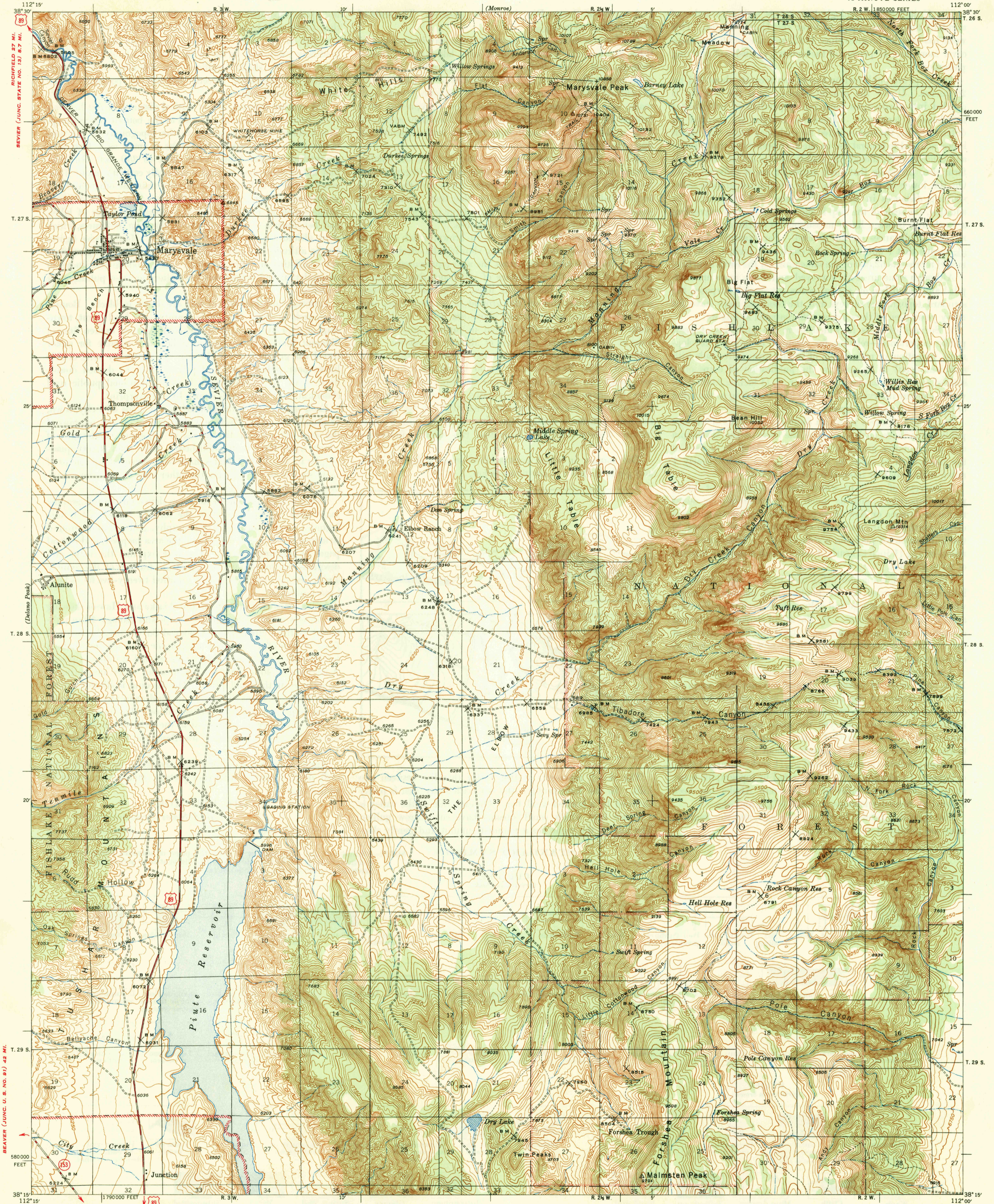


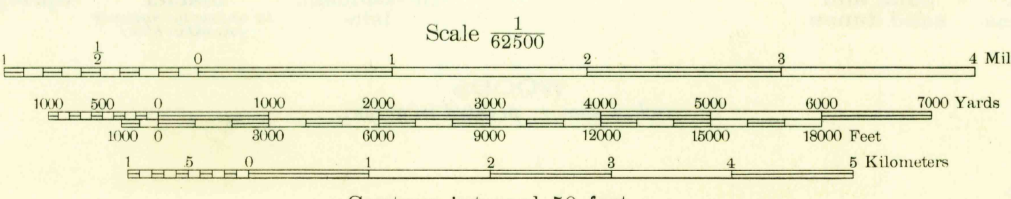
U.S.G.S.
FILE COPY



RICHLAND 87 MI.
BEAVER (JUNC. STATE NO. 153) 8.7 MI.
DULANO PEAK
T. 27 S.
T. 28 S.
T. 29 S.
58000 FEET

112° 00'
T. 26 S.
T. 27 S.
T. 28 S.
T. 29 S.
38° 15'

Mapped by the Geological Survey
1937 and 1944-1945
JUNCTION 1 MI.
PANGUICH 36 MI.



USGS
Historical File
Topographic Division

U.S.G.S.
FILE COPY

MARYSVALE, UTAH
Edition of 1947

N3815-W11200/15

SEP 26 1947

ROAD CLASSIFICATION
1947
Dependable hard-surface
heavy-duty road
Secondary hard-surface
all-weather road
More than two lanes indicated along road with tick at point of change
Dry weather roads
Loose-surface graded
Unsurfaced, graded
Dirt road
U.S. Route 153
State Route 89
APPROXIMATE MEAN DECLINATION, 1946
TRUE NORTH
MAGNETIC NORTH
16°

Contour interval 50 feet
Datum is mean sea level

Polyconic projection. 1927 North American datum
10000 foot grid based on Utah (South)
rectangular coordinate system

9/12/47
3235