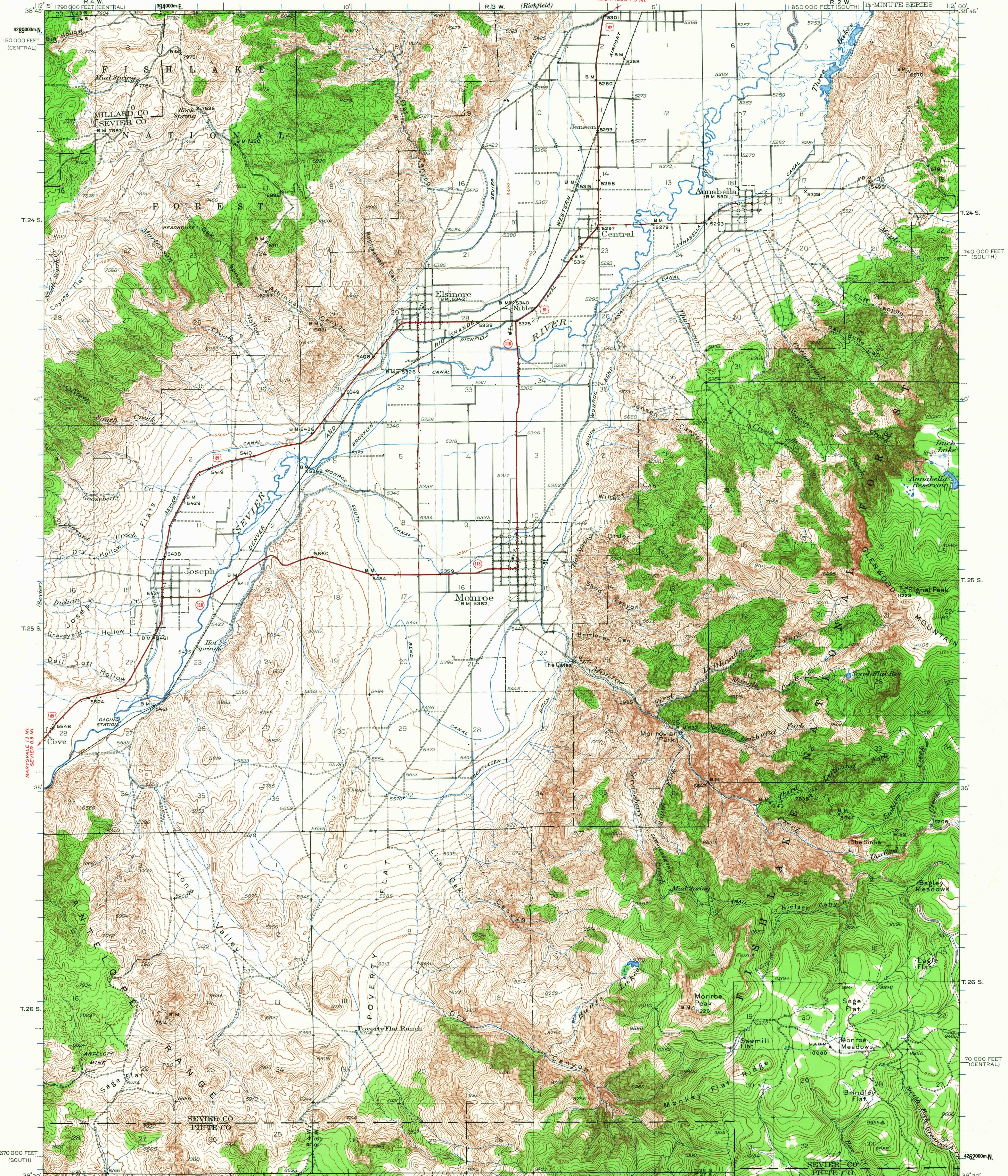


UNITED STATES
DEPARTMENT OF THE INTERIOR
GEOLOGICAL SURVEY

UTAH
MONROE QUADRANGLE
R. 2 W. RICHFIELD 1.5 MI.
1:850 000 FEET (SOUTH) 15-MINUTE SERIES



Topography by R.T. Evans, E.S. Rickard, K.A. Bunker, R.C. Dewey, and H.E. Skinner. Surveyed in 1937-38 and 1940.

SCALE 1:62500

CONTOUR INTERVAL 50 FEET
DATUM IS MEAN SEA LEVEL

U.S.G.S. FILE COPY TOPOGRAPHIC DIVISION

MONROE, UTAH
N 3830-W 11200/15
1940

FOR SALE BY U.S. GEOLOGICAL SURVEY, DENVER, COLORADO 80225 OR WASHINGTON, D. C. 20242
A FOLDER DESCRIBING TOPOGRAPHIC MAPS AND SYMBOLS IS AVAILABLE ON REQUEST

1790
SEP 28 1967