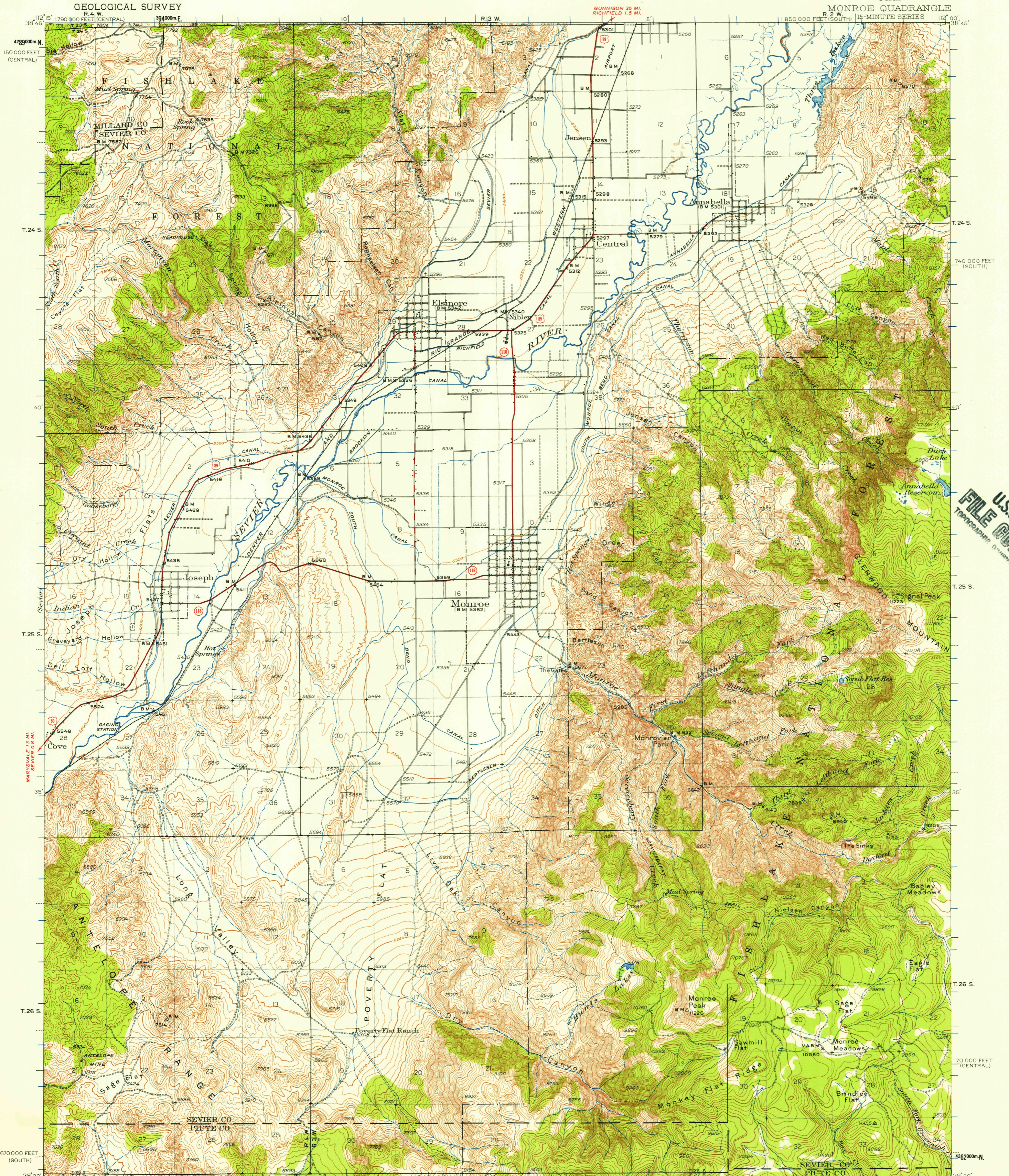


UNITED STATES
DEPARTMENT OF THE INTERIOR
GEOLOGICAL SURVEY

UTAH
MONROE QUADRANGLE



U.S.G.S.
FILE COPY

Topography by R.T. Evans, E.S. Rickard, K.A. Bunker, R.C. Dewey, and H.E. Skinner. Surveyed in 1937-38 and 1940.

ROAD CLASSIFICATION

- Heavy-duty ————
- Medium-duty ————
- Light-duty - - - - -
- Unimproved dirt - - - - -
- U.S. Route (Red circle)
- State Route (Black circle)

SCALE 1:62,500

3000 0 3000 6000 9000 12000 15000 18000 21000 FEET

1 0.5 0 1 2 3 4 5 KILOMETERS

CONTOUR INTERVAL 50 FEET
DATUM IS MEAN SEA LEVEL

INTERIOR—GEOLOGICAL SURVEY, WASHINGTON, D. C.—1987

1850 000 FEET (CENTRAL) | R. 2 W. | 12000m E. | 12' 30"

Polycyclic projection. 1927 North American datum
10,000-foot grids based on Utah (Central) and
Utah (South) rectangular coordinate systems
1000-meter Universal Transverse Mercator
grid ticks, zone 12, shown in blue

FOR SALE BY U. S. GEOLOGICAL SURVEY, DENVER 2, COLORADO OR WASHINGTON 25, D. C.
A FOLDER DESCRIBING TOPOGRAPHIC MAPS AND SYMBOLS IS AVAILABLE ON REQUEST

U.S.G.S.
FILE COPY
TOPOGRAPHIC DIVISION

MONROE, UTAH
N 3830—W 11200/15

1940
DEC 20 1957

1405