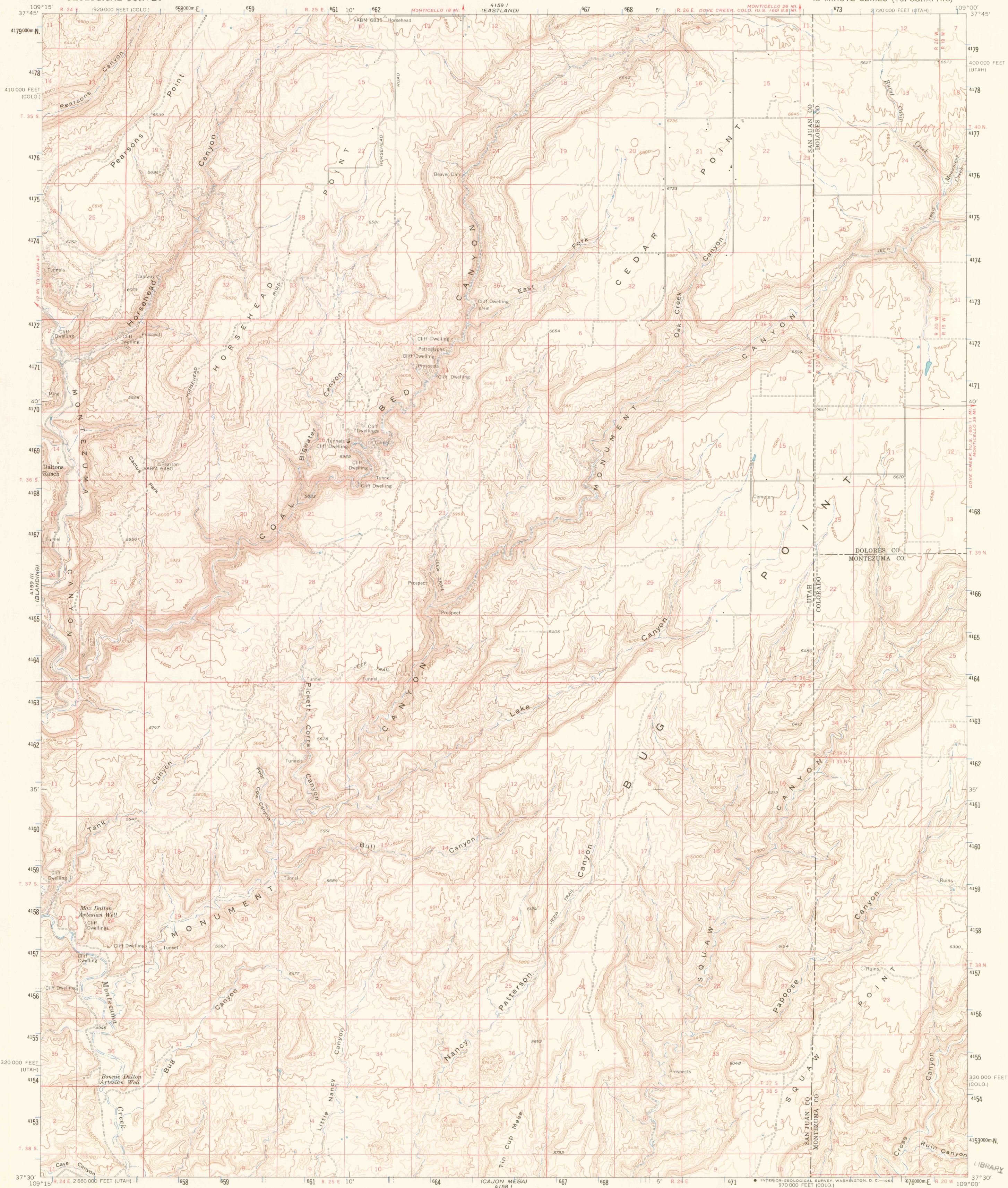
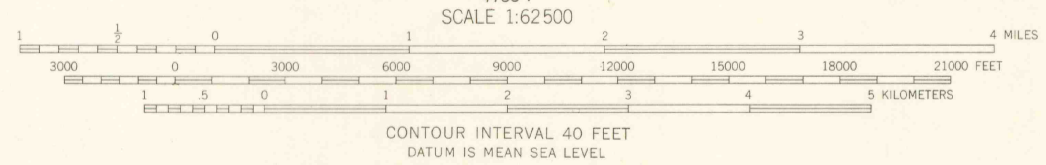
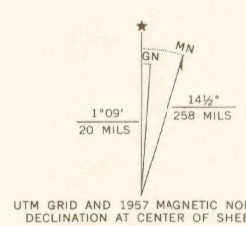


UNITED STATES
DEPARTMENT OF THE INTERIOR
GEOLOGICAL SURVEY

MONUMENT CANYON QUADRANGLE
UTAH-COLORADO
15 MINUTE SERIES (TOPOGRAPHIC)



Mapped, edited, and published by the Geological Survey
Control by USGS and USC&GS
Topography from aerial photographs by photogrammetric methods
Aerial photographs taken 1953 and 1955
Advance field check 1954 and 1957
Polyconic projection. 1927 North American datum
10,000-foot grids based on Utah coordinate system, south zone
and Colorado coordinate system, south zone
1000-meter Universal Transverse Mercator grid ticks,
zone 12, shown in blue
Dashed land lines indicate approximate locations
Unchecked elevations are shown in brown



ROAD CLASSIFICATION
Light-duty ——— Unimproved dirt - - - - -

MONUMENT CANYON, UTAH-COLO.
N 3730 - W 10900 / 15

THIS MAP COMPLIES WITH NATIONAL MAP ACCURACY STANDARDS
FOR SALE BY U. S. GEOLOGICAL SURVEY, DENVER 25, COLORADO OR WASHINGTON 25, D. C.
A FOLDER DESCRIBING TOPOGRAPHIC MAPS AND SYMBOLS IS AVAILABLE ON REQUEST

ARTHUR LAKES LIBRARY
COLORADO SCHOOL OF MINES

1957
AMS 4159 II SERIES V797

OFFICE COPY
370
C222
S62
U5

LIBRARY USE ONLY