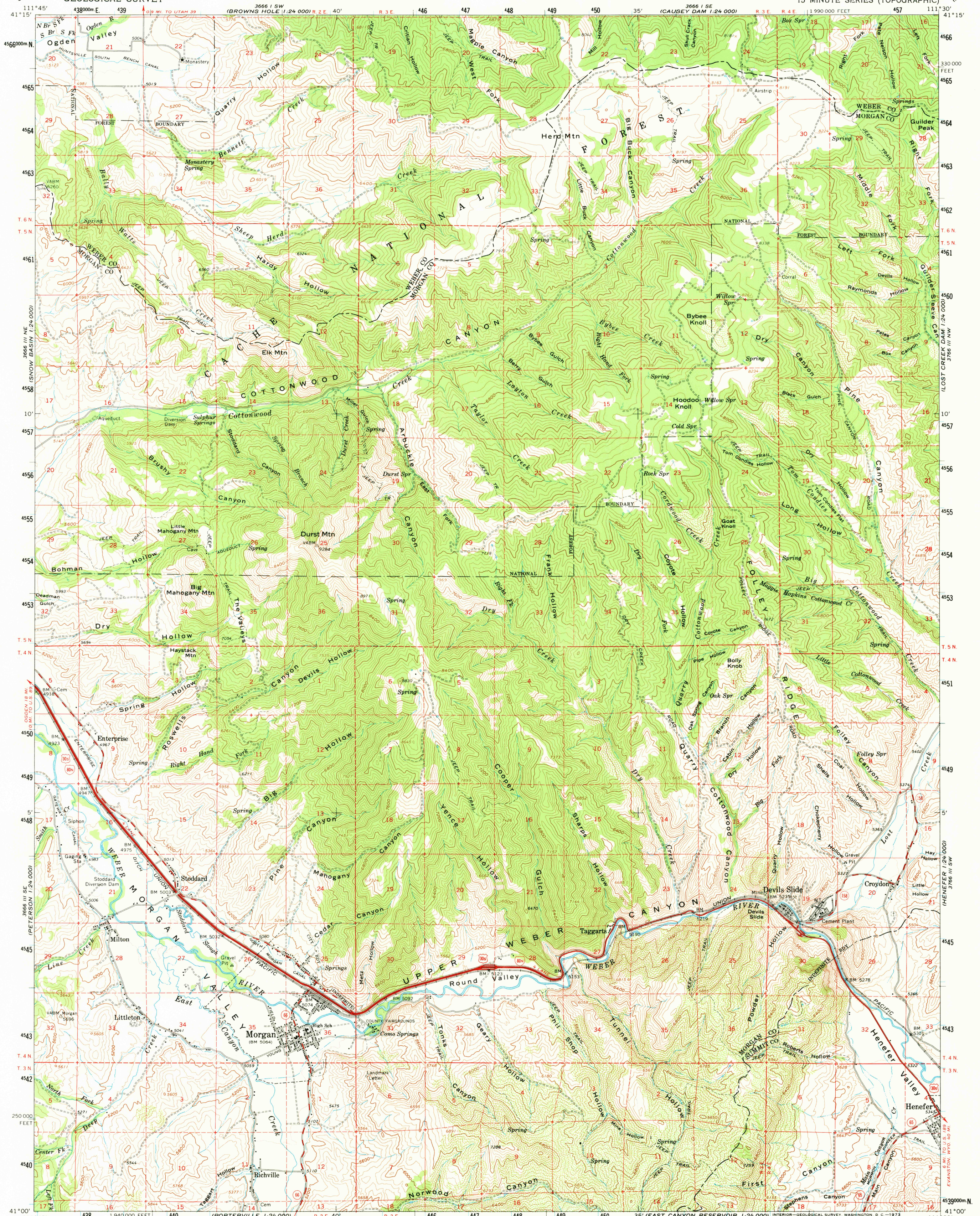
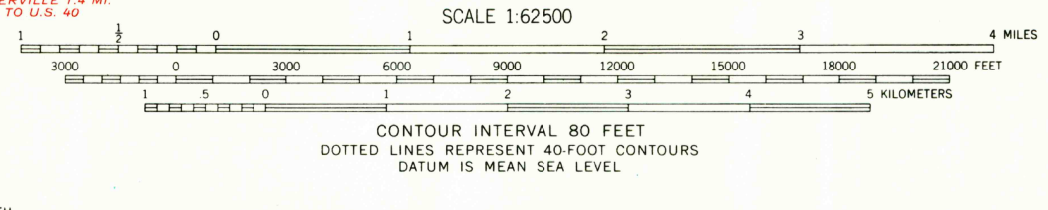
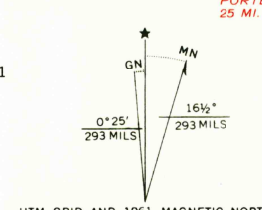


UNITED STATES  
DEPARTMENT OF THE INTERIOR  
GEOLOGICAL SURVEY

MORGAN QUADRANGLE  
UTAH  
15 MINUTE SERIES (TOPOGRAPHIC)



Mapped, edited, and published by the Geological Survey  
Control by USGS and USC&GS  
South half compiled in 1962 from 1:24 000-scale maps dated 1961  
North half topography by photogrammetric methods from aerial  
photographs taken 1956. Field checked 1961  
Polyconic projection. 1927 North American datum  
10,000-foot grid based on Utah coordinate system, north zone  
1000-meter Universal Transverse Mercator grid ticks,  
zone 12, shown in blue



ROAD CLASSIFICATION

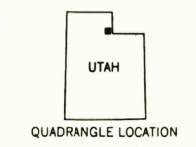
Heavy-duty	Light duty
Medium-duty	Unimproved dirt
Interstate Route	U.S. Route
	State Route

The South half of this area also covered by 7.5-minute, 1:24 000-scale maps Morgan 1961 and Devils Slide 1961

THIS MAP COMPLIES WITH NATIONAL MAP ACCURACY STANDARDS  
FOR SALE BY U.S. GEOLOGICAL SURVEY, DENVER, COLORADO 80225 OR WASHINGTON, D. C. 20242  
A FOLDER DESCRIBING TOPOGRAPHIC MAPS AND SYMBOLS IS AVAILABLE ON REQUEST

MORGAN, UTAH  
N4100-W11130/15  
1961  
AMS 3666 II—SERIES V797

JUL 24 1973



Historical  
Topographic Division