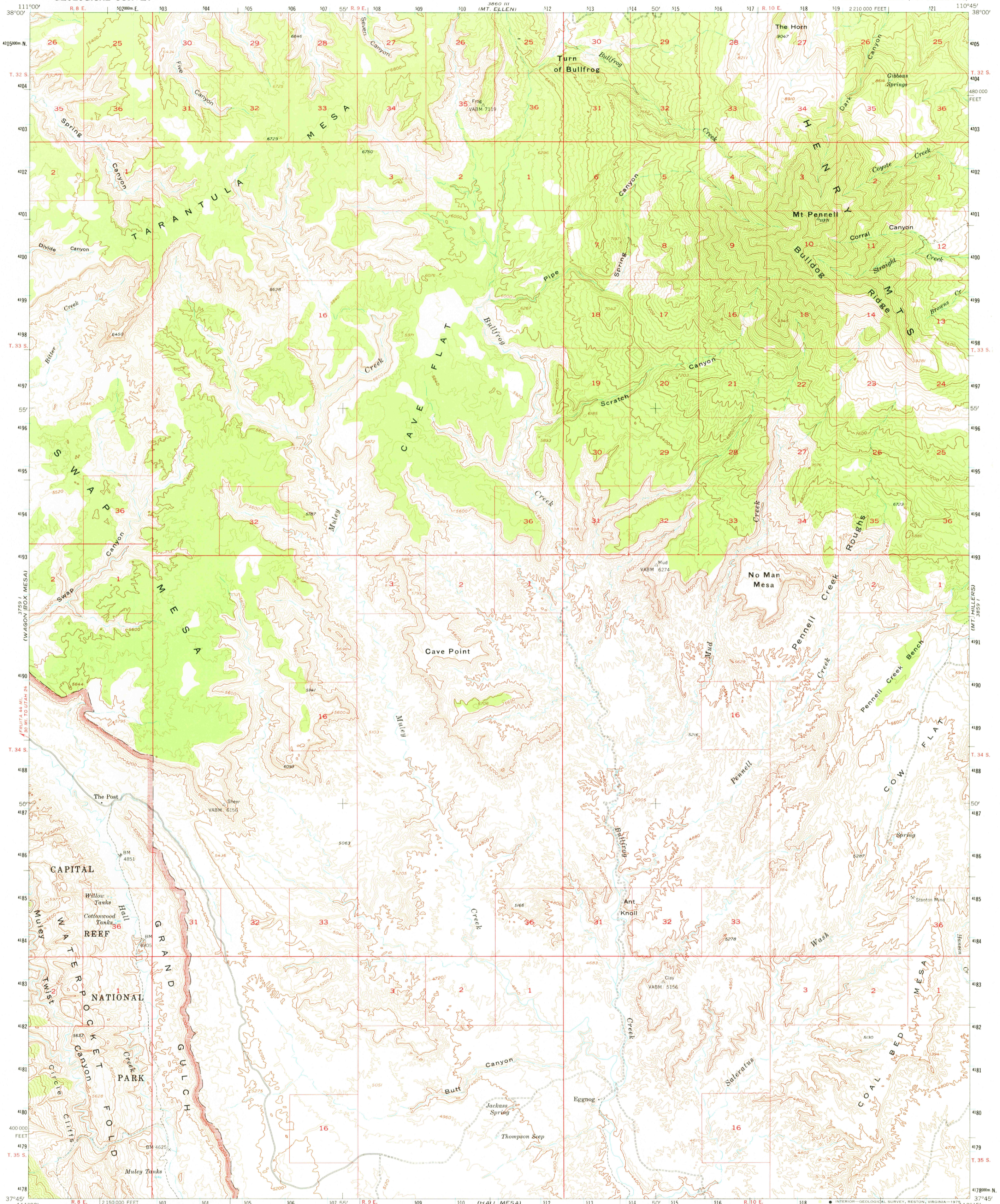
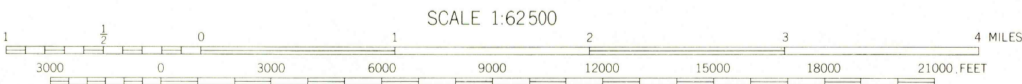
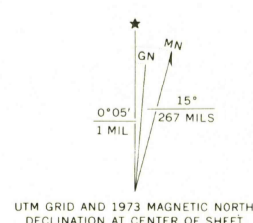


3861 W  
(BULL MOUNTAIN)



Mapped, edited, and published by the Geological Survey with cooperation by the Atomic Energy Commission Control by USGS and USC&GS  
Topography from aerial photographs by multiplex methods  
Aerial photographs taken 1951-52. Advance field check 1953  
Polyconic projection. 1927 North American datum  
10,000-foot grid based on Utah coordinate system, south zone  
1000-meter Universal Transverse Mercator grid ticks, zone 12, shown in blue



CONTOUR INTERVAL 80 FEET  
NATIONAL GEODETIC VERTICAL DATUM OF 1929

THIS MAP COMPLIES WITH NATIONAL MAP ACCURACY STANDARDS  
FOR SALE BY U. S. GEOLOGICAL SURVEY, DENVER, COLORADO 80225, OR RESTON, VIRGINIA 22092  
A FOLDER DESCRIBING TOPOGRAPHIC MAPS AND SYMBOLS IS AVAILABLE ON REQUEST



ROAD CLASSIFICATION  
Light-duty ————— Unimproved dirt - - - - -

MT. PENNELL, UTAH  
N3745—W11045/15

1953  
MINOR REVISIONS 1973  
AMS 3859 IV - SERIES V797

USGS  
Historical File  
Topographic Division

APR

2702