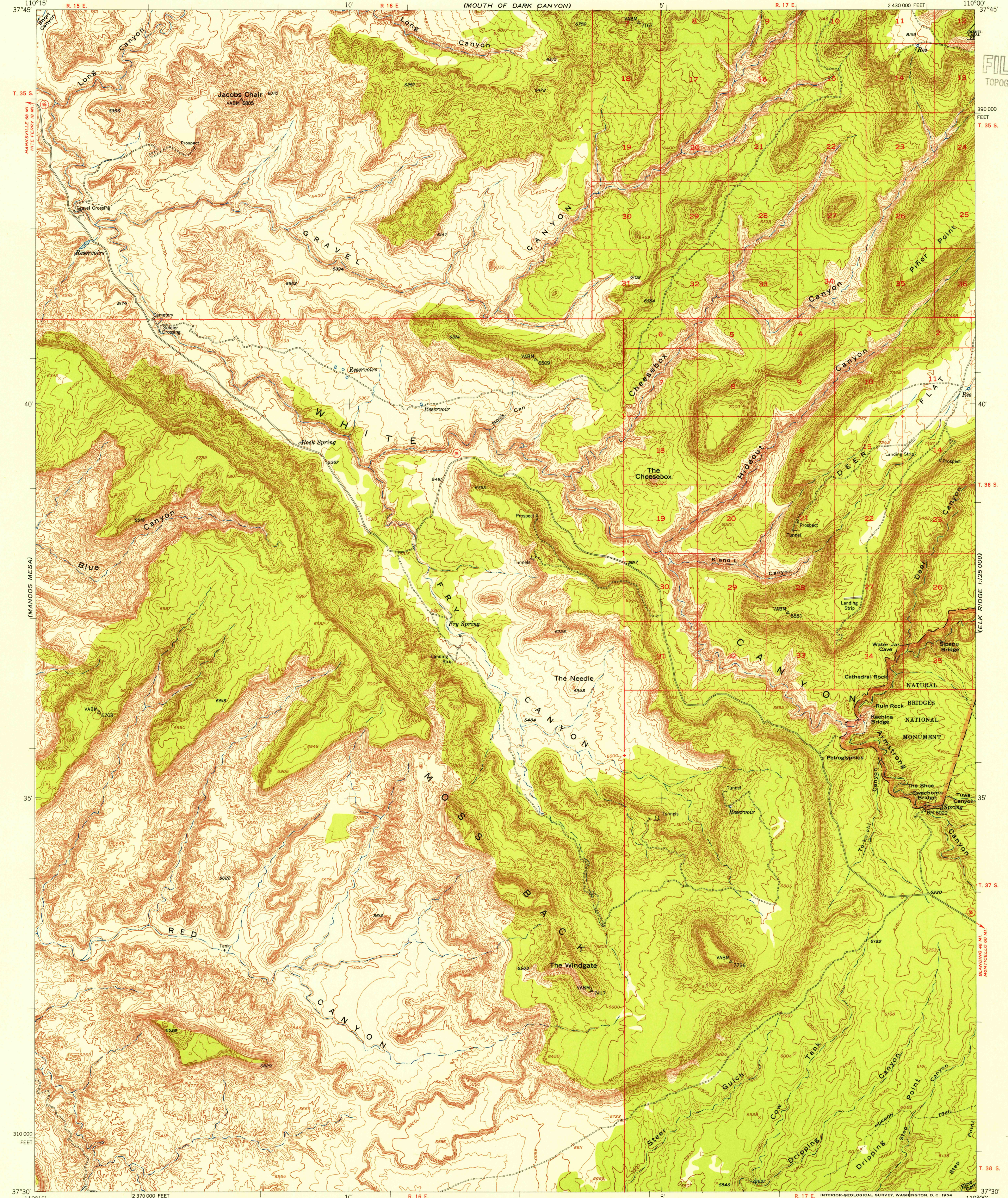
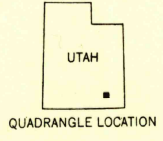
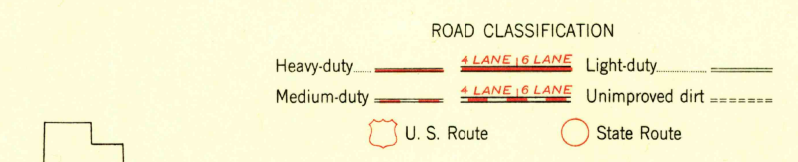
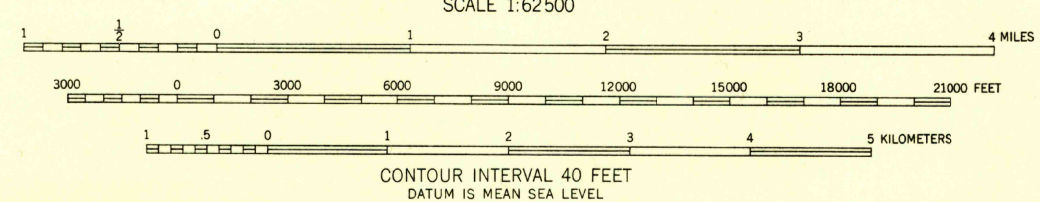
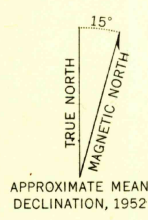


(ELK RIDGE)  
1:25,000



U.S.G.S.  
FILE COPY  
TOPOGRAPHIC DIVISION

Mapped, edited, and published by the Geological Survey  
Control by USGS  
Topography from aerial photographs by multiplex methods  
Aerial photographs taken 1951. Advance field check 1952  
Polyconic projection. 1927 North American datum  
10,000-foot grid based on Utah coordinate system, south zone  
Unchecked elevations are shown in brown



THIS MAP COMPLIES WITH NATIONAL MAP ACCURACY STANDARDS  
FOR SALE BY U. S. GEOLOGICAL SURVEY, FEDERAL CENTER, DENVER, COLORADO OR WASHINGTON 25, D. C.  
A FOLDER DESCRIBING TOPOGRAPHIC MAPS AND SYMBOLS IS AVAILABLE ON REQUEST

U.S.G.S.  
FILE COPY  
TOPOGRAPHIC DIVISION  
NATURAL BRIDGES, UTAH  
N3730-W11000/15  
1952

JAN 19 1955  
2070