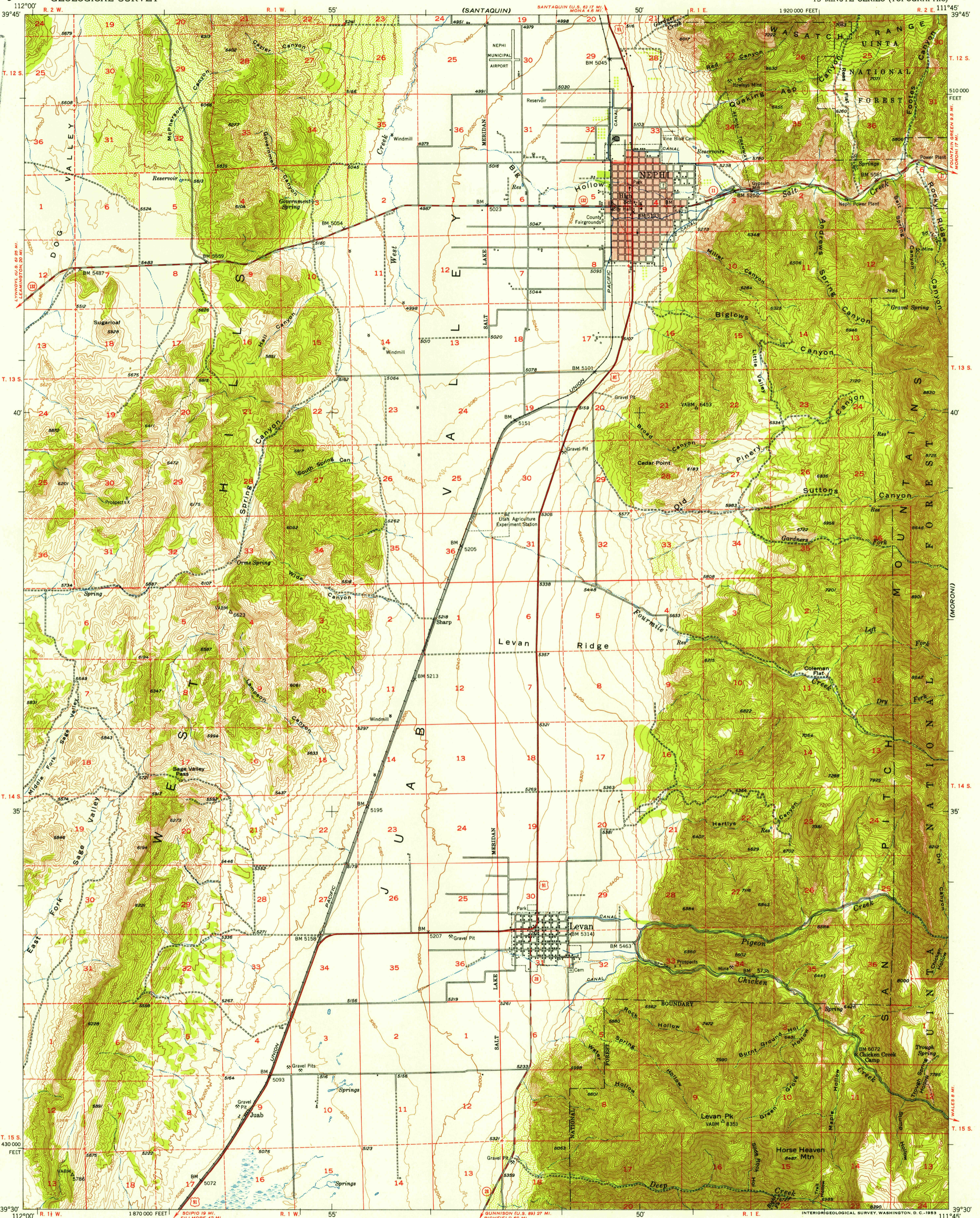


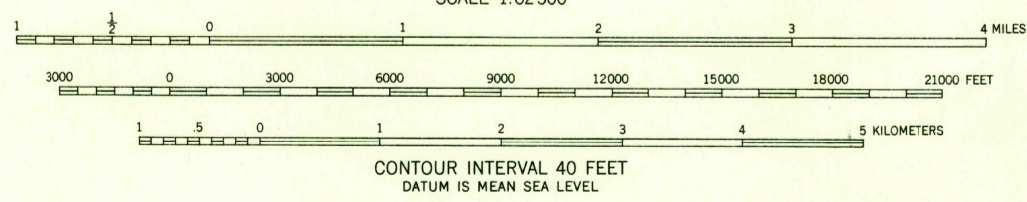
UNITED STATES  
DEPARTMENT OF THE INTERIOR  
GEOLOGICAL SURVEY

NEPHI QUADRANGLE  
UTAH-JUAB CO.  
15 MINUTE SERIES (TOPOGRAPHIC)



U.S.G.S.  
FILE COPY  
Inspection and Rating.

Mapped, edited, and published by the Geological Survey  
Control by USGS and USC&GS  
Topography from aerial photographs by multiplex methods  
and by plane-table surveys 1951. Aerial photographs taken 1947  
Polyconic projection. 1927 North American datum  
10,000-foot grid based on Utah coordinate system, central zone  
Red tint indicates area in which only landmark buildings are shown  
Dashed land lines indicate approximate locations  
Unchecked elevations are shown in brown



ROAD CLASSIFICATION

Heavy-duty	4 LANE 6 LANE	Light-duty	2 LANE 4 LANE
Medium-duty	4 LANE 6 LANE	Unimproved dirt	---

U.S. Route (circle with number)  
State Route (circle with number)

U.S.G.S.  
FILE COPY  
Inspection and Rating.

THIS MAP COMPLIES WITH NATIONAL MAP ACCURACY STANDARDS  
FOR SALE BY U. S. GEOLOGICAL SURVEY, FEDERAL CENTER, DENVER, COLORADO OR WASHINGTON 25, D. C.  
A FOLDER DESCRIBING TOPOGRAPHIC MAPS AND SYMBOLS IS AVAILABLE ON REQUEST

NEPHI, UTAH  
N3930-W1145/15  
1951

FEB 3 1953 2652