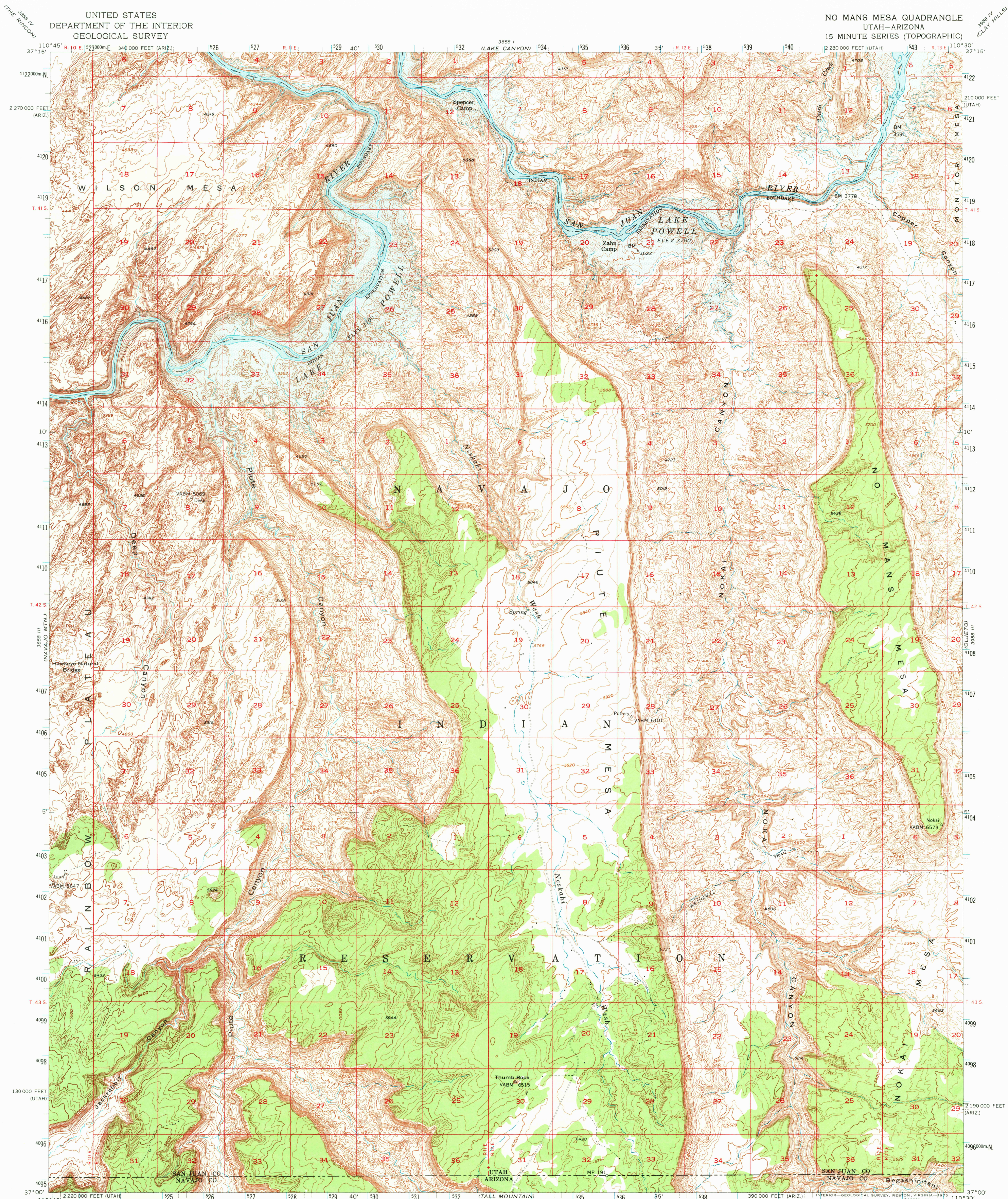
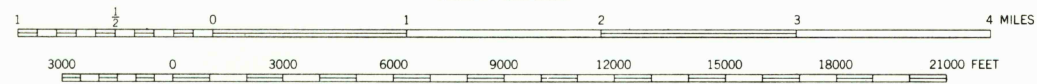
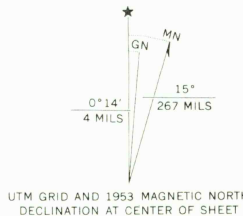


UNITED STATES
DEPARTMENT OF THE INTERIOR
GEOLOGICAL SURVEY

NO MANS MESA QUADRANGLE
UTAH—ARIZONA
15 MINUTE SERIES (TOPOGRAPHIC)



Mapped, edited, and published by the Geological Survey with cooperation by the Atomic Energy Commission Control by USGS, USC&GS, and USBR
Topography from aerial photographs by multiplex methods
Aerial photographs taken 1951-52. Advance field check 1953
Polyconic projection. 1927 North American datum
10,000-foot grids based on Utah coordinate system, south zone and Arizona coordinate system, east zone
1000-metre Universal Transverse Mercator grid ticks, zone 12, shown in blue
Unchecked elevations are shown in brown
Blue hatching indicates areas to be submerged by Lake Powell at elevation 3700 feet



CONTOUR INTERVAL 40 FEET
NATIONAL GEODETIC VERTICAL DATUM OF 1929

THIS MAP COMPLIES WITH NATIONAL MAP ACCURACY STANDARDS
FOR SALE BY U. S. GEOLOGICAL SURVEY, DENVER, COLORADO 80225, OR RESTON, VIRGINIA 22092
A FOLDER DESCRIBING TOPOGRAPHIC MAPS AND SYMBOLS IS AVAILABLE ON REQUEST



ROAD CLASSIFICATION
Unimproved dirt
Trails

NO MANS MESA, UTAH—ARIZ.
N3700—W11030/15

1953

AMS 3858 II—SERIES V797

USGS
HISTORICAL FILE
TOPOGRAPHIC DIVISION

OCT 11

2