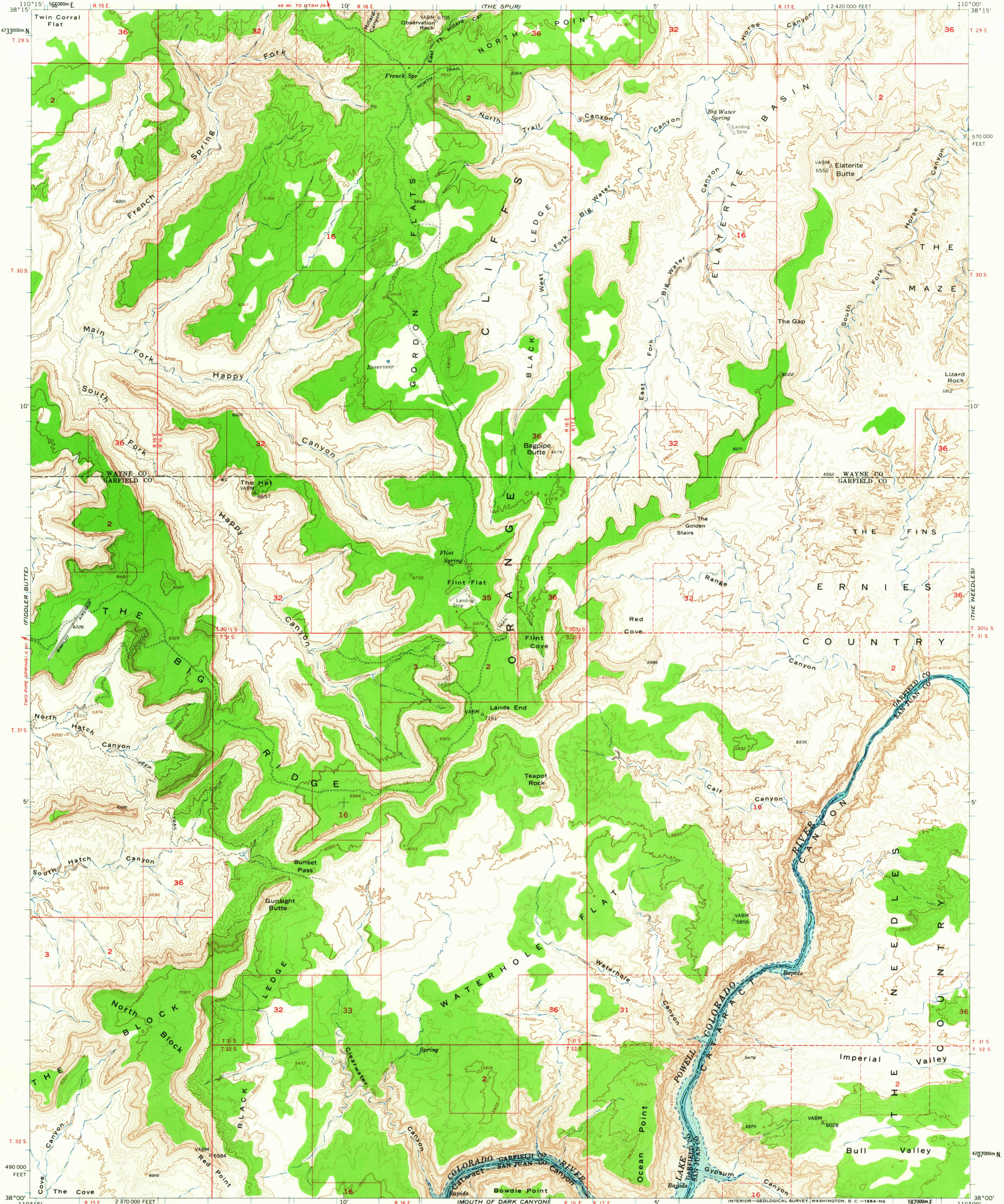
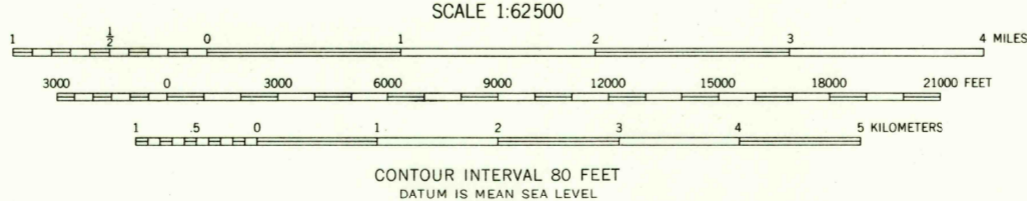
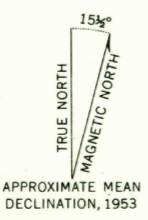


(UPHEAVAL DOME)



Mapped, edited, and published by the Geological Survey with cooperation by the Atomic Energy Commission
Control by USGS and USC&GS
Topography from aerial photographs by multiplex methods
Aerial photographs taken 1952. Advance field check 1953
Polyconic projection. 1927 North American datum
10,000-foot grid based on Utah coordinate system, south zone
1000-meter Universal Transverse Mercator grid ticks, zone 12, shown in blue
Unchecked elevations are shown in brown
Blue hatching indicates area to be submerged by Lake Powell at elevation 3700 feet



ROAD CLASSIFICATION
Unimproved dirt

THIS MAP COMPLIES WITH NATIONAL MAP ACCURACY STANDARDS
FOR SALE BY U. S. GEOLOGICAL SURVEY, DENVER 25, COLORADO OR WASHINGTON 25, D. C.
A FOLDER DESCRIBING TOPOGRAPHIC MAPS AND SYMBOLS IS AVAILABLE ON REQUEST

ORANGE CLIFFS, UTAH
N3800—W11000/15
1953

DEC - 6 1963

3100