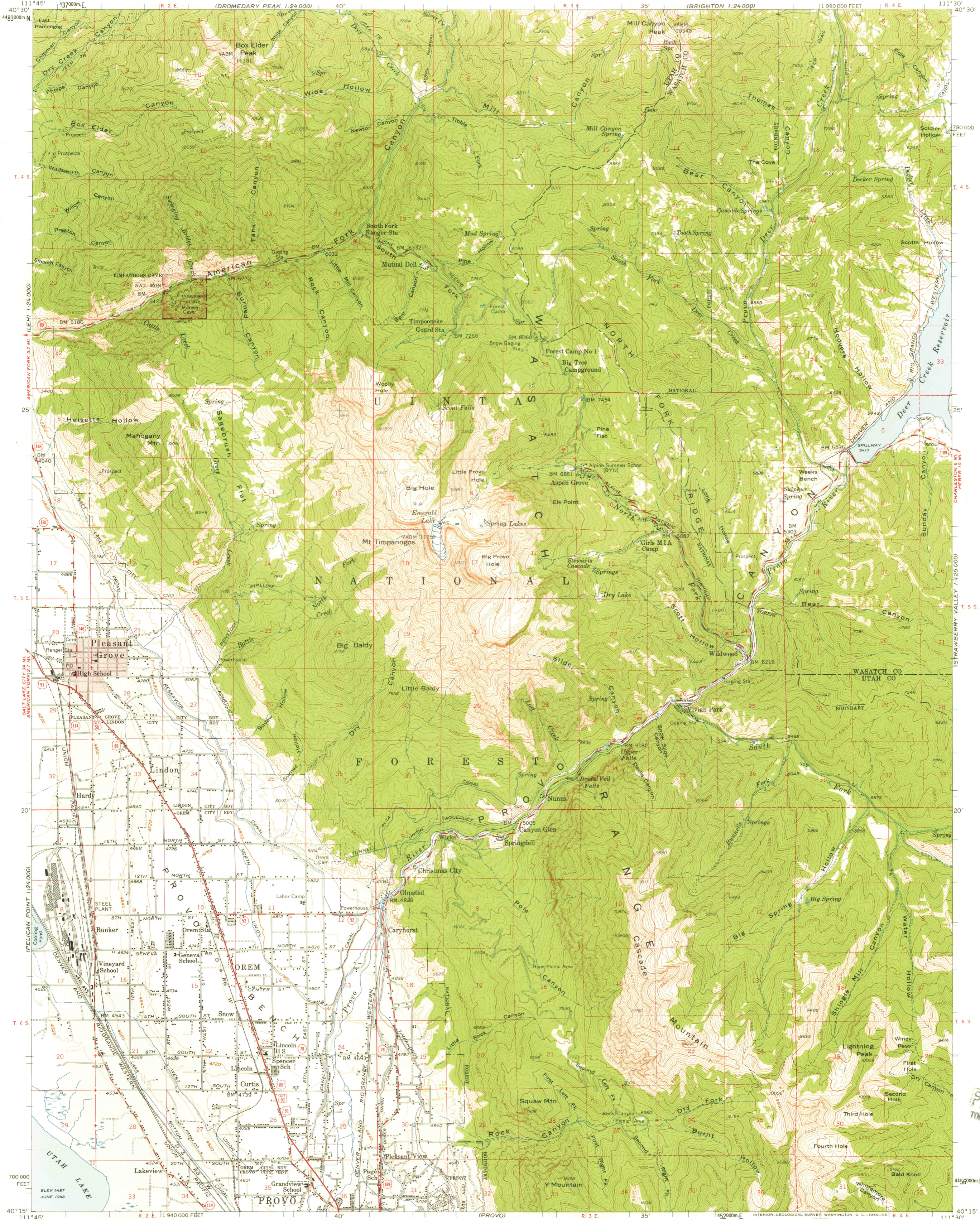
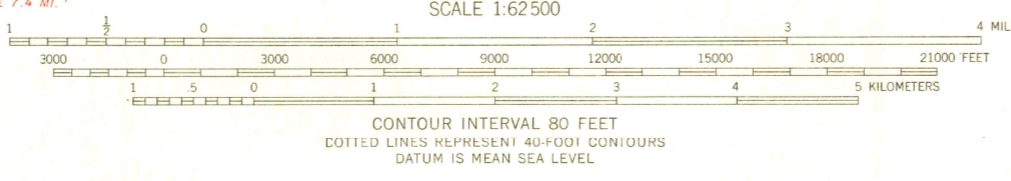
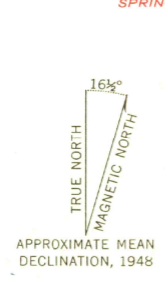


DRAPER 1:24,000

HEBER 1:24,000

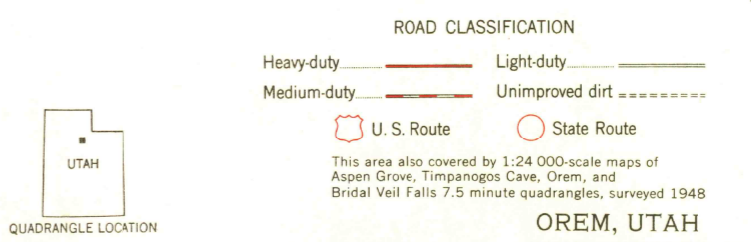


Mapped, edited, and published by the Geological Survey
Control by USGS and USC&GS
Compiled in 1958 from 1:24 000-scale maps of
Aspen Grove, Timpanogos Cave, Orem, and
Bridal Veil Falls 7.5 minute quadrangles, surveyed 1948
Topography from aerial photographs by multiplex method
and by planetable surveys. Aerial photographs taken 1946
Polyconic projection. 1927 North American datum
10,000-foot grid based on Utah coordinate system, central zone
1000-meter Universal Transverse Mercator grid ticks,
zone 12, shown in blue
Red tint indicates areas in which only landmark buildings are shown
Dashed land lines indicate approximate locations
Unchecked elevations are shown in brown



CONTOUR INTERVAL 80 FEET
DOTTED LINES REPRESENT 40-FOOT CONTOURS
DATUM IS MEAN SEA LEVEL

THIS MAP COMPLIES WITH NATIONAL MAP ACCURACY STANDARDS
FOR SALE BY U. S. GEOLOGICAL SURVEY, DENVER 25, COLORADO OR WASHINGTON 25, D. C.
A FOLDER DESCRIBING TOPOGRAPHIC MAPS AND SYMBOLS IS AVAILABLE ON REQUEST



This area also covered by 1:24 000-scale maps of
Aspen Grove, Timpanogos Cave, Orem, and
Bridal Veil Falls 7.5 minute quadrangles, surveyed 1948

OREM, UTAH
N4015-W1130/15

1948

U.S.G.S.
FILE COPY
TOPOGRAPHIC DIVISION

SEP 25 1959

2500