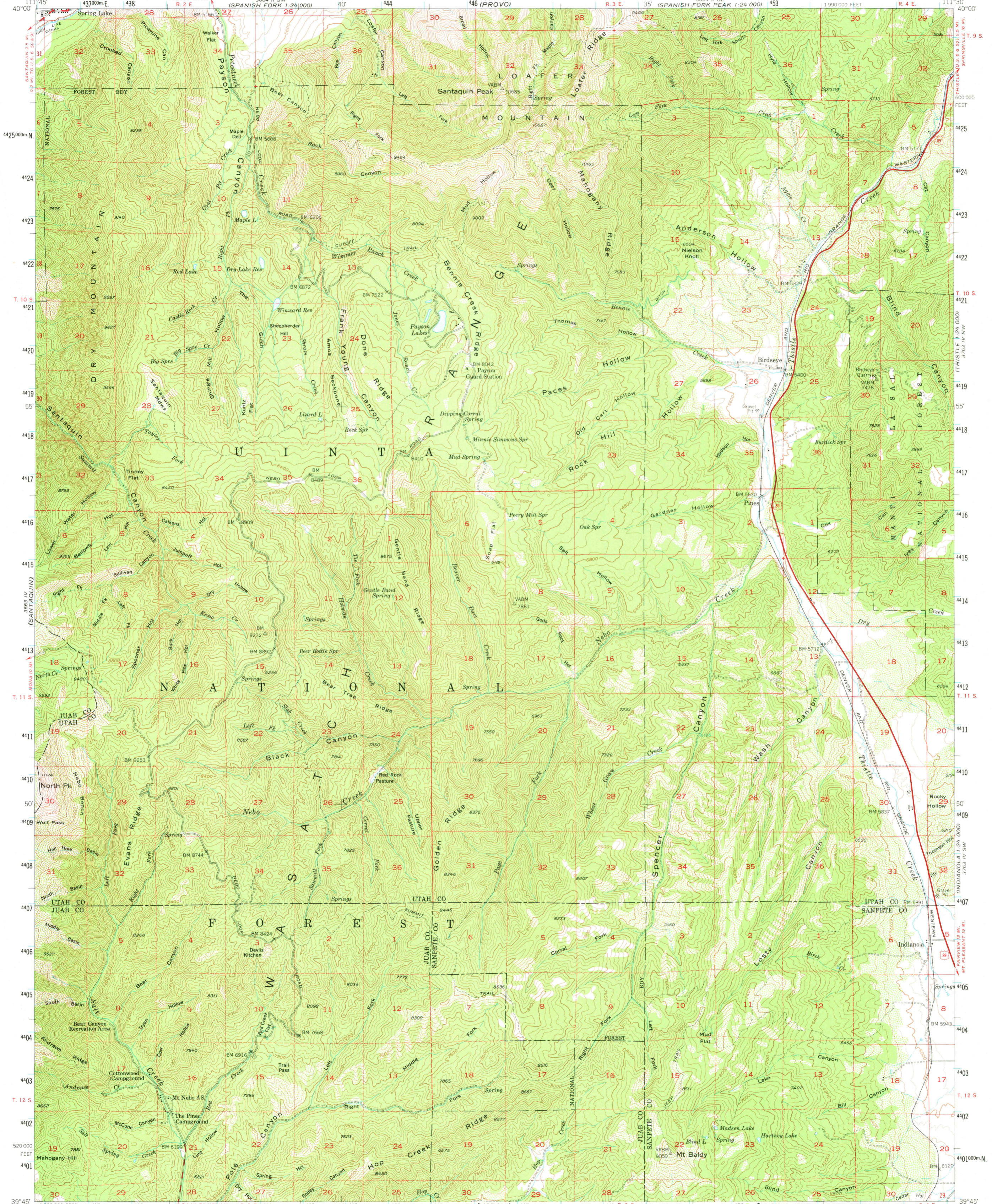
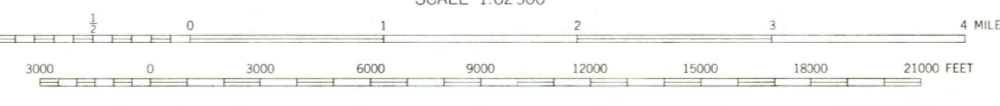
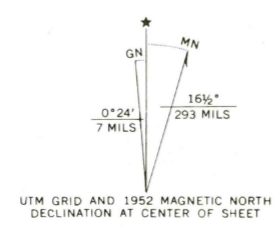


UNITED STATES
DEPARTMENT OF THE INTERIOR
GEOLOGICAL SURVEY

SANTAQUIN PEAK QUADRANGLE
UTAH
15 MINUTE SERIES (TOPOGRAPHIC)



Mapped, edited, and published by the Geological Survey
Control by USGS and USC&GS
Topography from aerial photographs by multiplex methods
Aerial photographs taken 1947. Field check 1952
Polyconic projection - 1927 North American datum
10,000-foot grid based on Utah coordinate system, central zone
Dashed land lines indicate approximate locations
1000-metre Universal Transverse Mercator grid ticks,
zone 12, shown in blue



CONTOUR INTERVAL 80 FEET
DOTTED LINES REPRESENT HALF-INTERVAL CONTOURS
NATIONAL GEODETIC VERTICAL DATUM OF 1929

THIS MAP COMPLIES WITH NATIONAL MAP ACCURACY STANDARDS
FOR SALE BY U.S. GEOLOGICAL SURVEY, DENVER, COLORADO 80225, OR RESTON, VIRGINIA 22092
A FOLDER DESCRIBING TOPOGRAPHIC MAPS AND SYMBOLS IS AVAILABLE ON REQUEST

ROAD CLASSIFICATION

Heavy-duty	LANE 6 LANE	Light-duty
Medium-duty	LANE 6 LANE	Unimproved dirt
U.S. Route		State Route



SANTAQUIN PEAK, UTAH
N3945-W11130/15

USGS
HISTORICAL FILE
TOPOGRAPHIC DIVISION

1952
AMS 3663 I-SERIES V797

3750