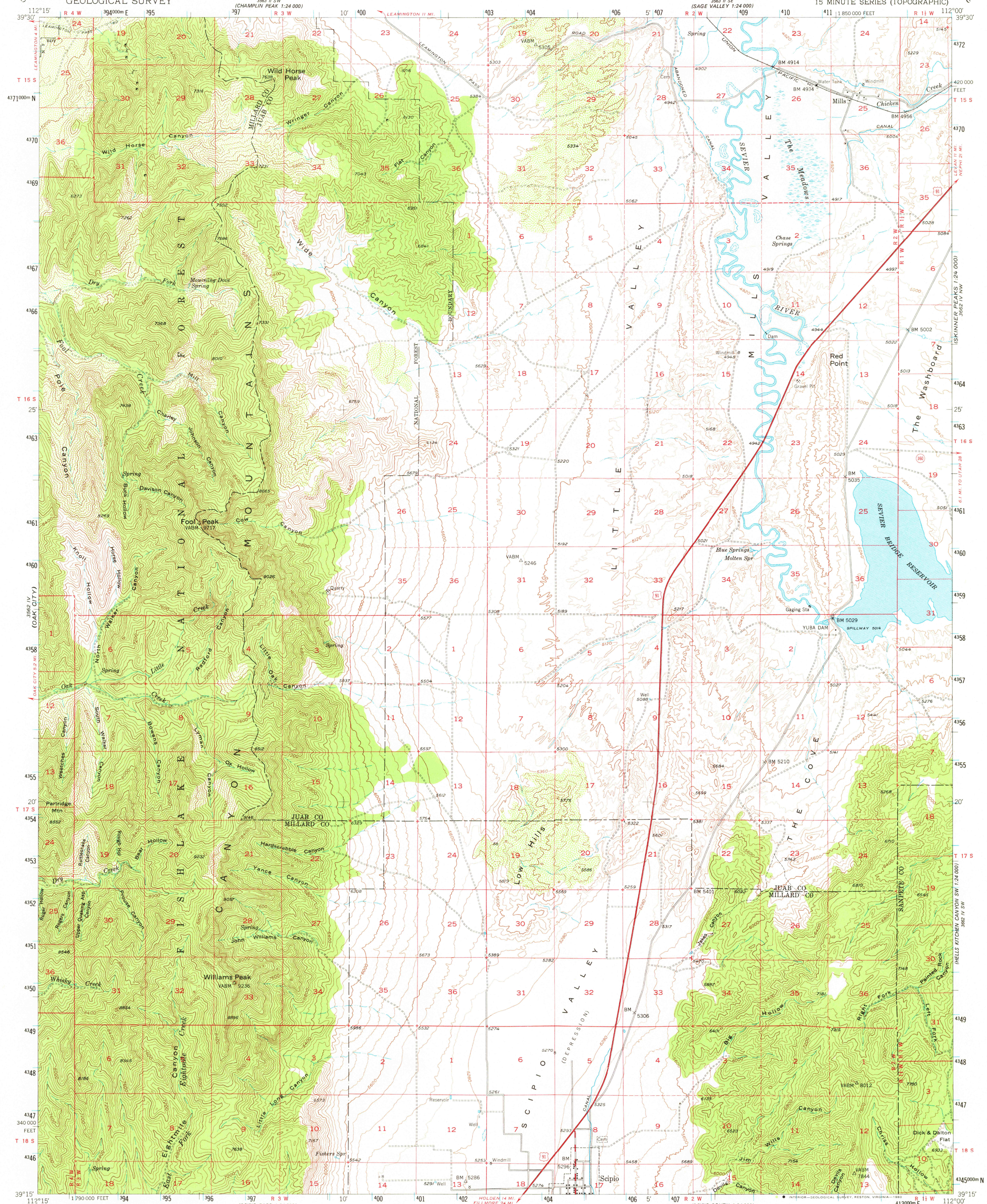
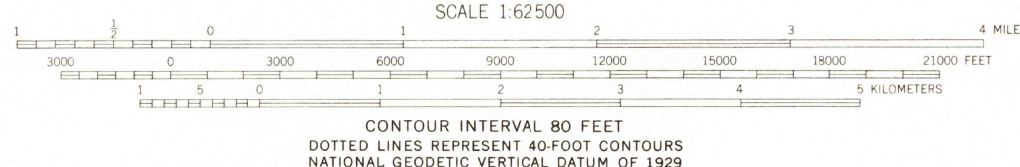
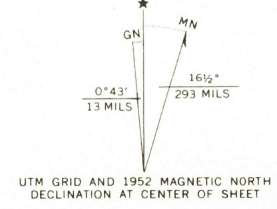


UNITED STATES DEPARTMENT OF THE INTERIOR GEOLOGICAL SURVEY

SCIPIO NORTH QUADRANGLE UTAH 15 MINUTE SERIES (TOPOGRAPHIC)



Mapped, edited, and published by the Geological Survey Control by USGS and USC&GS. Topography from aerial photographs by multiplex methods and by plane-table surveys 1952. Aerial photographs taken 1950. Polyconic projection. 1927 North American datum 10,000-foot grid based on Utah coordinate system, central zone. Dashed land lines indicate approximate locations. 1000-meter Universal Transverse Mercator grid ticks, zone 10, shown in blue. To place on the predicted North American Datum 1983 move the projection lines 8 meters north and 66 meters east. There may be private inholdings within the boundaries of the National and State Reservations shown on this map.



ROAD CLASSIFICATION: Heavy-duty (4 LANE 16 LANE), Medium-duty (4 LANE 16 LANE), Light-duty, Unimproved dirt. U.S. Route, State Route. Includes a small map of Utah showing the quadrangle location.

SCIPIO NORTH, UTAH N3915-W11200/15 1952 DMA 3562 I-SERIES V797

2400