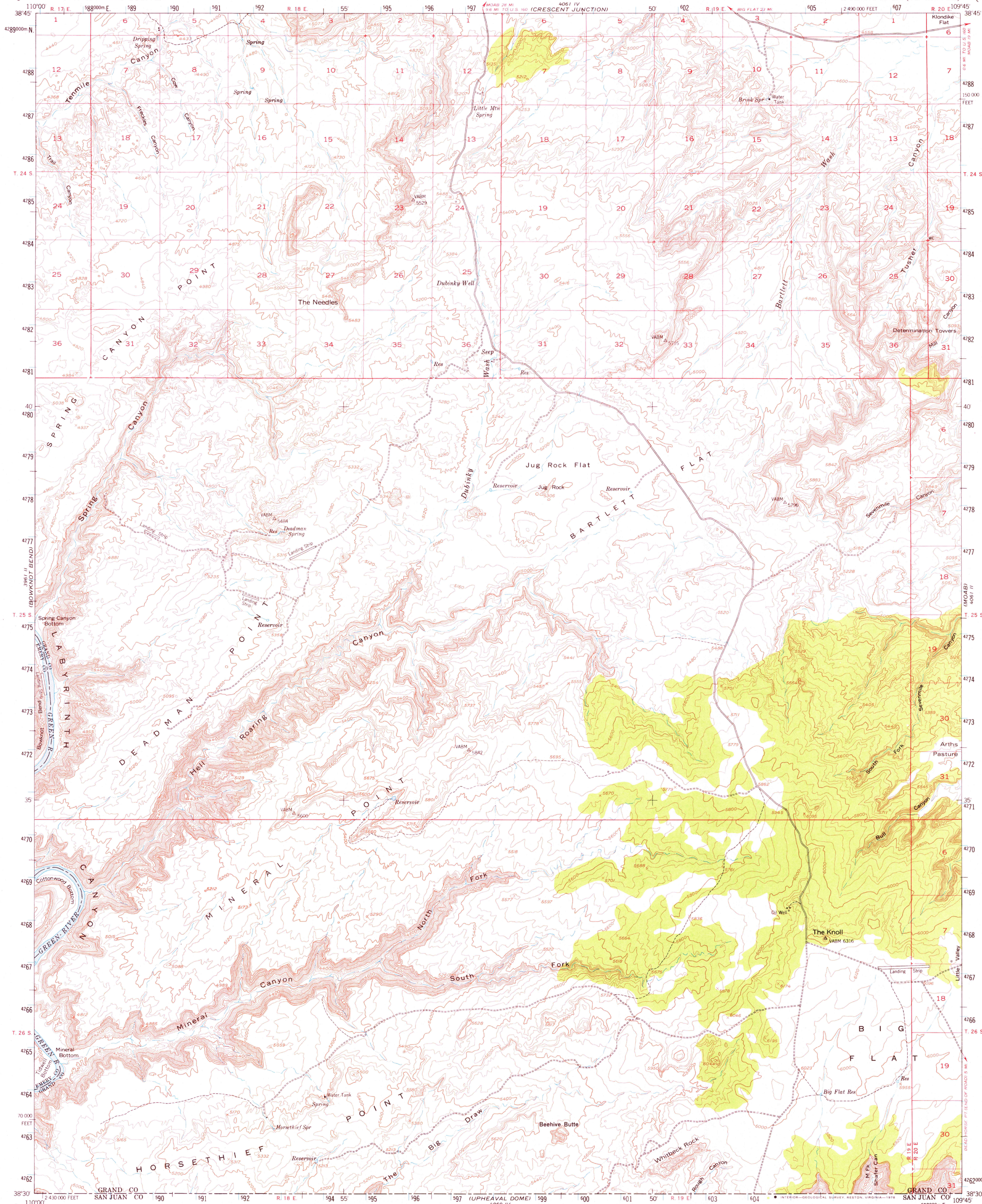
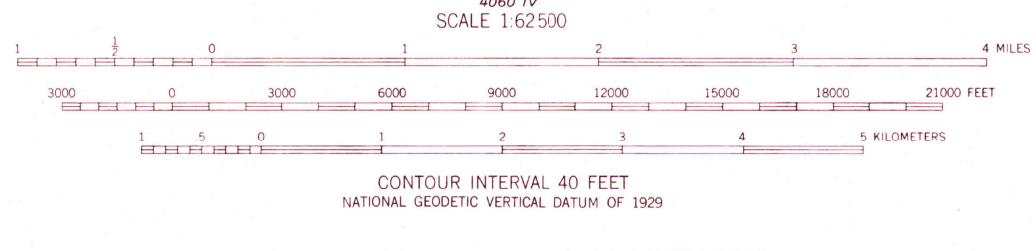
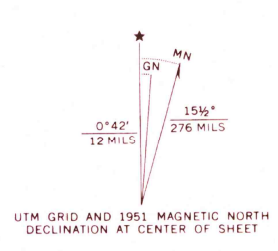


UNITED STATES  
DEPARTMENT OF THE INTERIOR  
GEOLOGICAL SURVEY

THE KNOLL QUADRANGLE  
UTAH  
15 MINUTE SERIES (TOPOGRAPHIC)



Mapped, edited, and published by the Geological Survey  
Control by USGS and USC&GS  
Topography from aerial photographs by multiplex methods  
Aerial photographs taken 1951. Advance field check 1951  
Polyconic projection. 1927 North American datum  
10,000-foot grid based on Utah coordinate system, central zone  
Unchecked elevations are shown in brown  
1000-meter Universal Transverse Mercator grid ticks,  
zone 12, shown in blue



ROAD CLASSIFICATION

Heavy-duty	2 LANE 6 LANE	Light-duty
Medium-duty	2 LANE 6 LANE	Unimproved dirt
U. S. Route		State Route



THIS MAP COMPLIES WITH NATIONAL MAP ACCURACY STANDARDS  
FOR SALE BY U. S. GEOLOGICAL SURVEY, DENVER, COLORADO 80225, OR RESTON, VIRGINIA 22092  
A FOLDER DESCRIBING TOPOGRAPHIC MAPS AND SYMBOLS IS AVAILABLE ON REQUEST

USGS  
Historical File  
Topographic Division

THE KNOLL, UTAH  
N3830-W10945/15  
1951  
AMS 4061 III-SERIES V797

MAR 23 1978  
3450