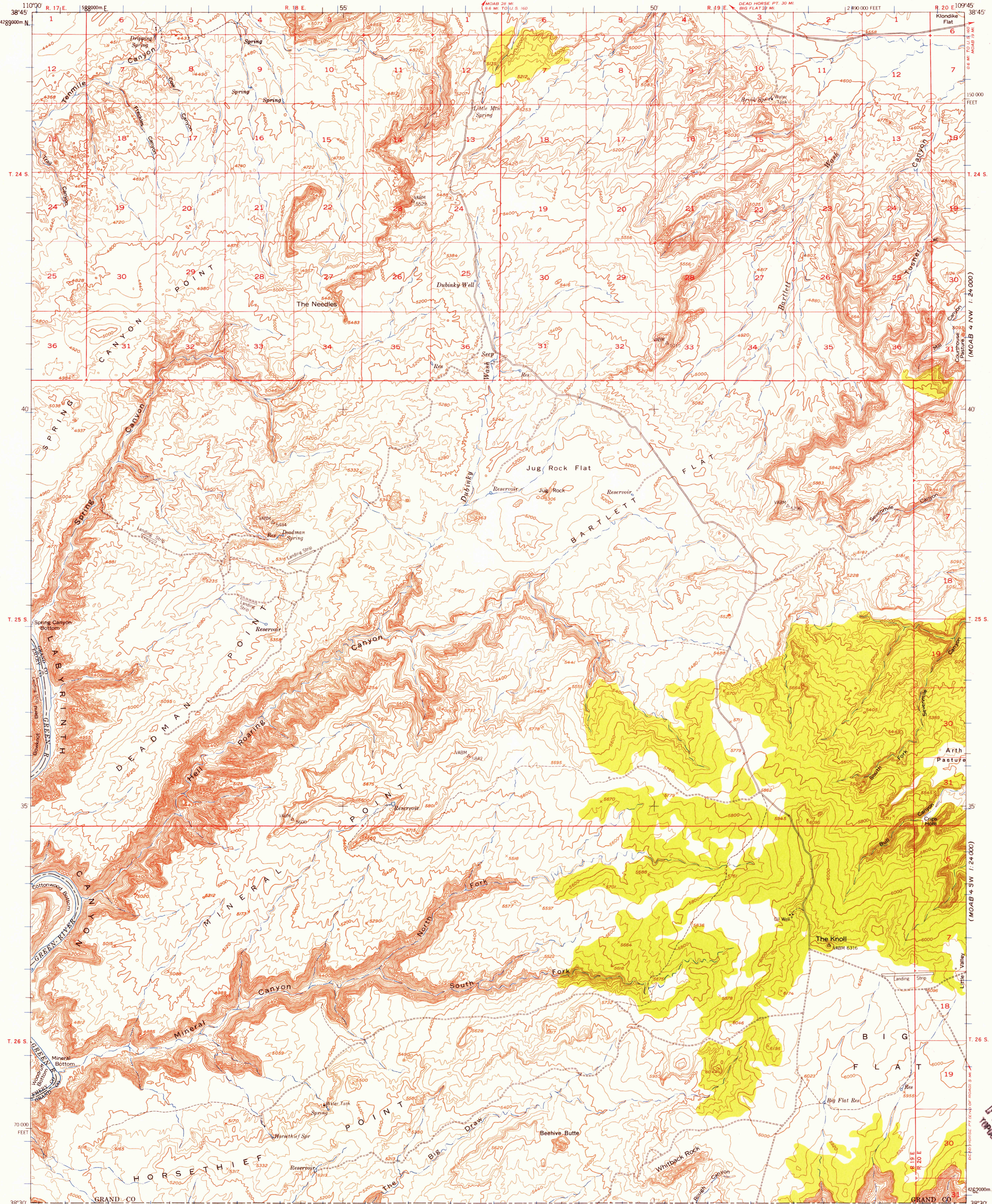


(TOWELL 1 SE)  
1:24,000

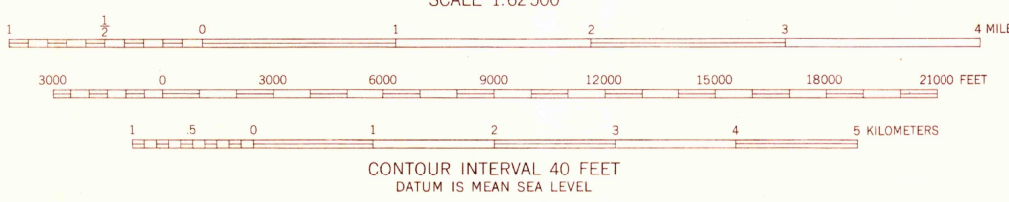
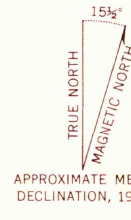
UNITED STATES  
DEPARTMENT OF THE INTERIOR  
GEOLOGICAL SURVEY

THE KNOLL QUADRANGLE  
UTAH  
15 MINUTE SERIES (TOPOGRAPHIC)



(ORANGE CLIFF 1 NE)  
1:24,000

Mapped, edited, and published by the Geological Survey  
Control by USGS and USC&GS  
Topography from aerial photographs by multiplex methods  
Aerial photographs taken 1951. Advance field check 1951  
Polyconic projection. 1927 North American datum  
10,000-foot grid based on Utah coordinate system, central zone  
Unchecked elevations are shown in brown  
1000-meter Universal Transverse Mercator grid ticks,  
zone 12, shown in blue



CONTOUR INTERVAL 40 FEET  
DATUM IS MEAN SEA LEVEL

USGS  
Historical File  
Topographic Division

ROAD CLASSIFICATION

Heavy-duty	4 LANE, 6 LANE	Light-duty
Medium-duty	4 LANE, 6 LANE	Unimproved dirt

U.S. Route  
State Route

This area also covered by 1:24,000 scale maps  
of Moab 3 NE, Moab 3 NW, Moab 3 SW, and Moab 3 SE  
7.5-minute quadrangles, surveyed in 1952

THE KNOLL, UTAH  
N3830-W10945/15

1951

THIS MAP COMPLIES WITH NATIONAL MAP ACCURACY STANDARDS  
FOR SALE BY U.S. GEOLOGICAL SURVEY, FEDERAL CENTER, DENVER, COLORADO OR WASHINGTON 25, D. C.  
A FOLDER DESCRIBING TOPOGRAPHIC MAPS AND SYMBOLS IS AVAILABLE ON REQUEST

U.S.G.S.  
FILE COPY  
TOPOGRAPHIC DIVISION

JAN 10 1958  
2850