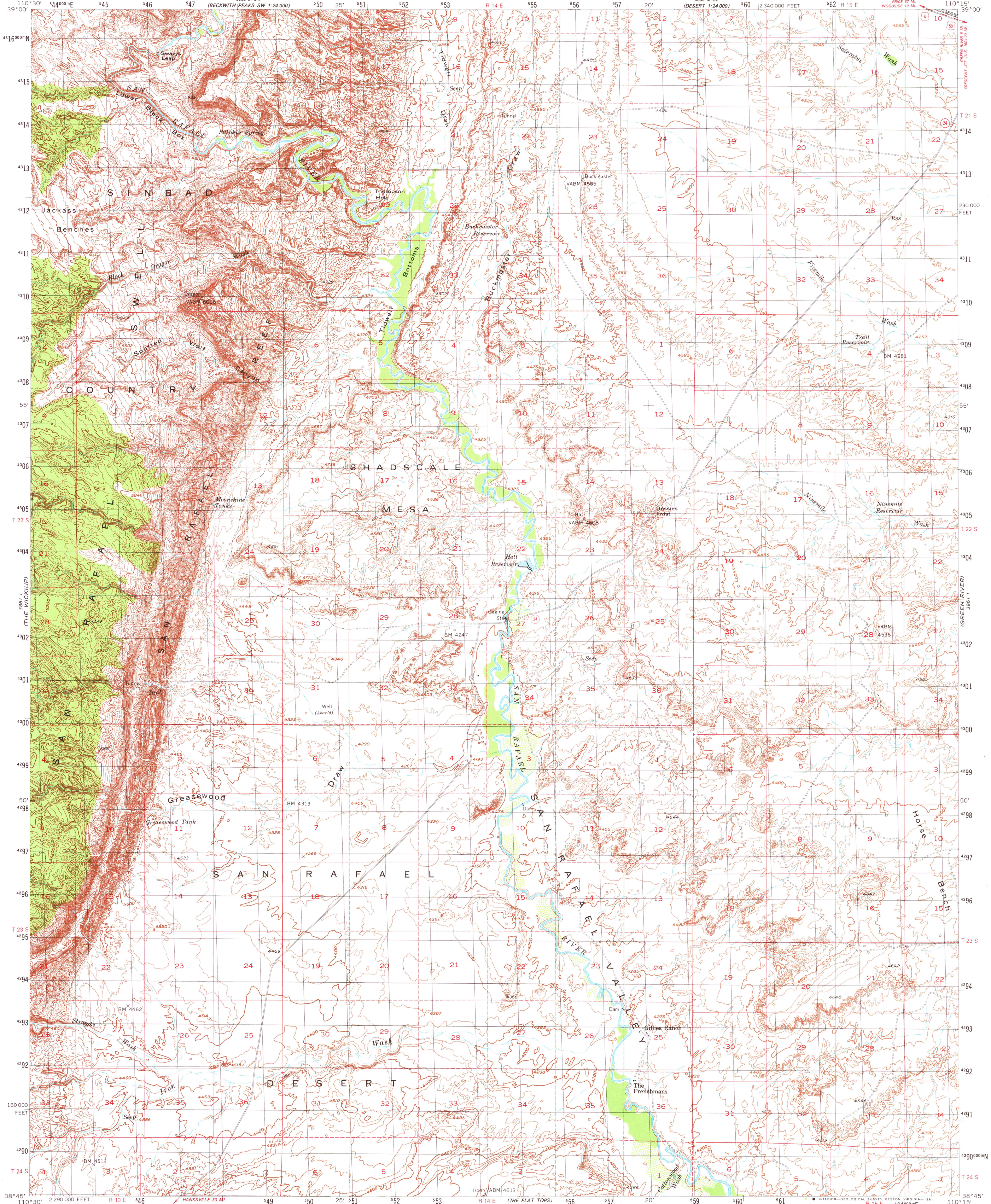
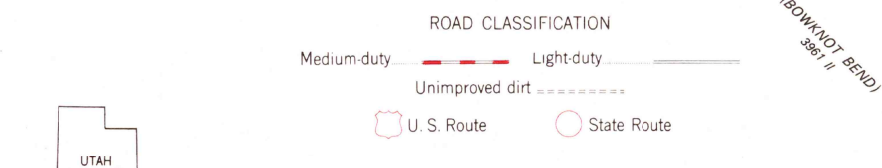
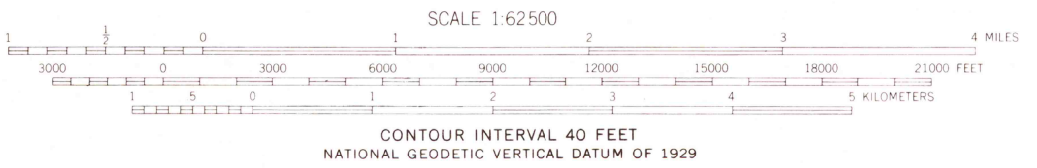
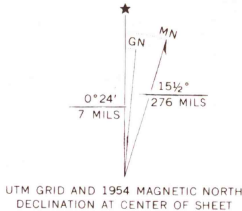


UNITED STATES  
DEPARTMENT OF THE INTERIOR  
GEOLOGICAL SURVEY

TIDWELL BOTTOMS QUADRANGLE  
UTAH-EMERY CO.  
15 MINUTE SERIES (TOPOGRAPHIC)



Mapped, edited, and published by the Geological Survey  
Control by USGS and USC&GS  
Topography from aerial photographs by photogrammetric methods  
Aerial photographs taken 1952-53. Advance field check 1952 and 1954  
Polyconic projection. 1927 North American datum  
10,000-foot grid based on Utah coordinate system, central zone  
1000-meter Universal Transverse mercator grid,  
zone 12, shown in black  
Dashed land lines indicate approximate locations  
Unchecked elevations are shown in brown  
To place on the predicted North American Datum 1983 move  
the projection lines 6 meters north and 62 meters east



THIS MAP COMPLIES WITH NATIONAL MAP ACCURACY STANDARDS  
FOR SALE BY U.S. GEOLOGICAL SURVEY, DENVER, COLORADO 80225, OR RESTON, VIRGINIA 22092  
A FOLDER DESCRIBING TOPOGRAPHIC MAPS AND SYMBOLS IS AVAILABLE ON REQUEST

TIDWELL BOTTOMS, UTAH  
N3845-W11015/15  
1954  
DMA 3961 IV-SERIES V797

RETURN TO:  
USGS NHD HISTORICAL MAP ARCHIVES

1900