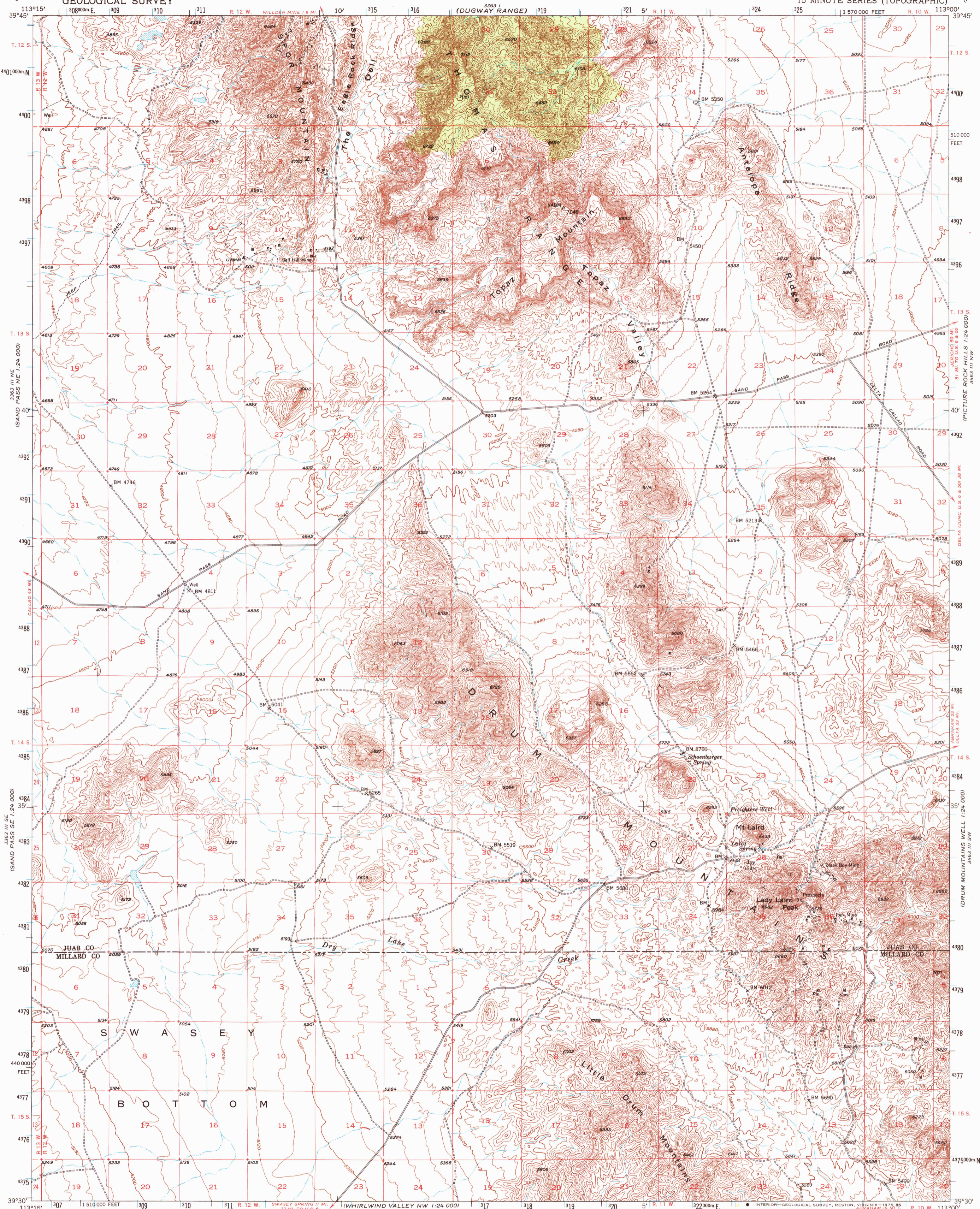
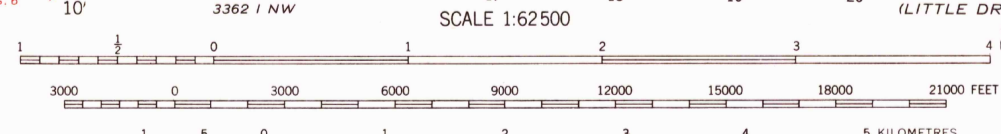
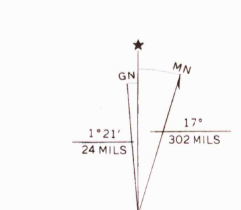


UNITED STATES  
DEPARTMENT OF THE INTERIOR  
GEOLOGICAL SURVEY

TOPAZ MTN. QUADRANGLE  
UTAH  
15 MINUTE SERIES (TOPOGRAPHIC)

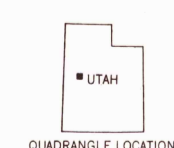


Mapped, edited, and published by the Geological Survey  
Control by USGS and USC&GS  
Topography from aerial photographs by photogrammetric methods  
Aerial photographs taken 1951. Field check 1953  
Polyconic projection. 1927 North American datum  
10,000-foot grid based on Utah coordinate system, central zone  
1000-metre Universal Transverse Mercator grid ticks,  
zone 12, shown in blue



CONTOUR INTERVAL 40 FEET  
NATIONAL GEODETIC VERTICAL DATUM OF 1929

THIS MAP COMPLIES WITH NATIONAL MAP ACCURACY STANDARDS  
FOR SALE BY U. S. GEOLOGICAL SURVEY, DENVER, COLORADO 80225, OR RESTON, VIRGINIA 22092  
A FOLDER DESCRIBING TOPOGRAPHIC MAPS AND SYMBOLS IS AVAILABLE ON REQUEST



ROAD CLASSIFICATION  
Light-duty ——— Unimproved dirt - - - - -

TOPAZ MTN., UTAH  
N9930-W11300/15

1953

AMS 3363 II--SERIES V797

3363 IV SE  
(FISH SPRINGS SE)  
1:24 0000

3363 IV SW  
(KEG PASS 1:24 0000)

3363 III SE  
(SAND PASS NE 1:24 0000)

3363 III SW  
(DELTA JUNCTION U.S. 6 & 50 38 MI.)

3363 II SW  
(MILLER MOUNTAINS WEST)  
1:24 0000