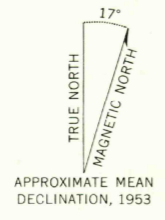
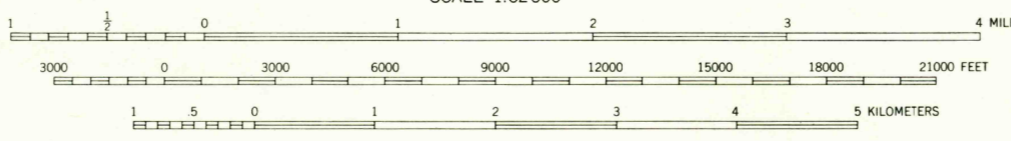


Maped, edited, and published by the Geological Survey
Control by USGS and USC&GS
Topography from aerial photographs by photogrammetric methods
Aerial photographs taken 1951. Field check 1953
Polyconic projection. 1927 North American datum
10,000-foot grid based on Utah coordinate system, central zone
1000-meter Universal Transverse Mercator grid ticks,
zone 12, shown in blue

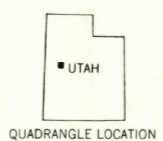


APPROXIMATE MEAN
DECLINATION, 1953



SCALE 1:62500

CONTOUR INTERVAL 40 FEET
DATUM IS MEAN SEA LEVEL



QUADRANGLE LOCATION

ROAD CLASSIFICATION
Light duty ———— Unimproved dirt - - - - -

USGS
Historical File
Topographic Division

TOPAZ MTN. UTAH
N 3930-W 11300/15

1953

THIS MAP COMPLIES WITH NATIONAL MAP ACCURACY STANDARDS
FOR SALE BY U. S. GEOLOGICAL SURVEY, DENVER 25, COLORADO OR WASHINGTON 25, D. C.
A FOLDER DESCRIBING TOPOGRAPHIC MAPS AND SYMBOLS IS AVAILABLE ON REQUEST

FEB 25 1963

FILE COPY
TOPOGRAPHIC DIVISION