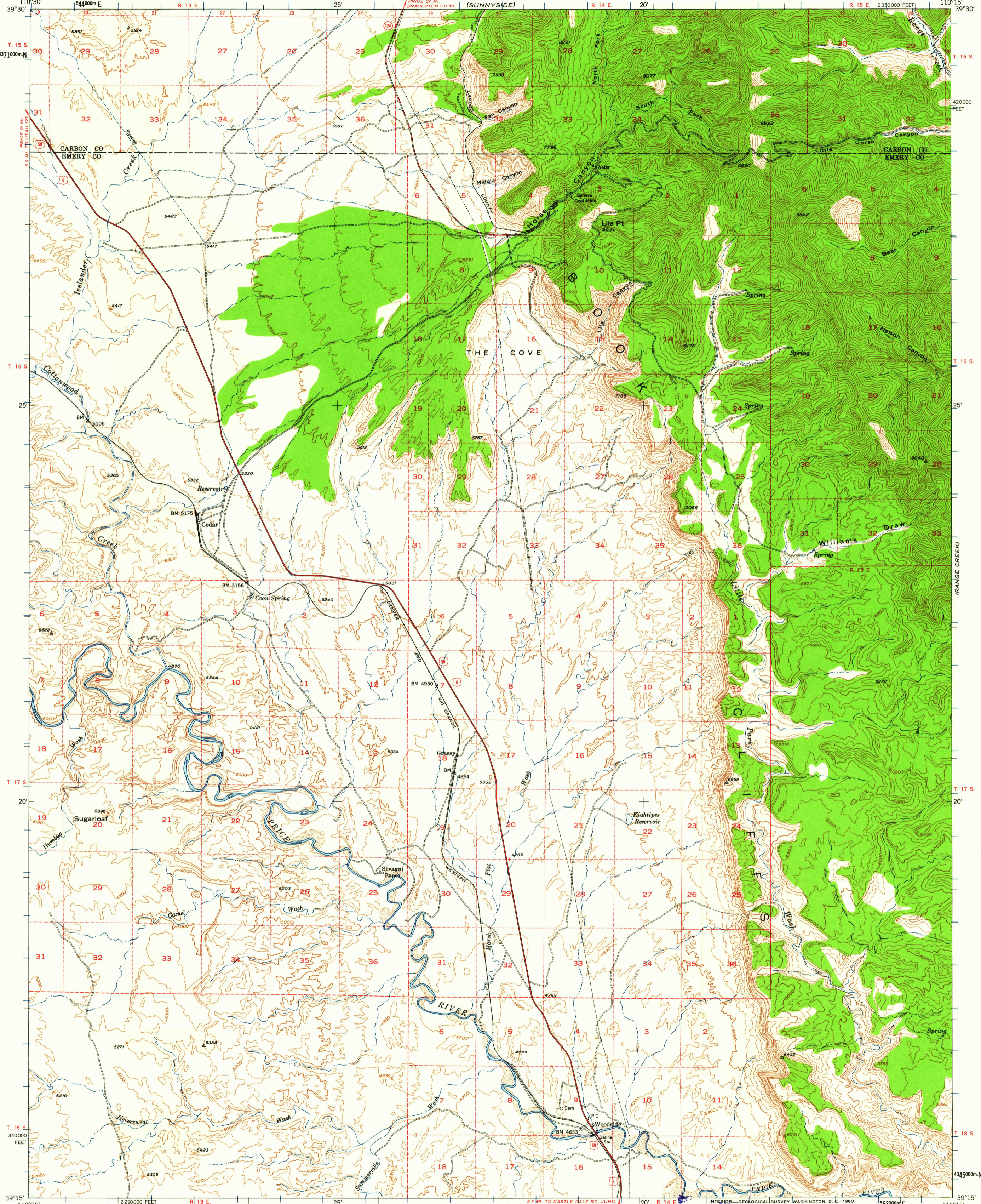


(WELLINGTON)

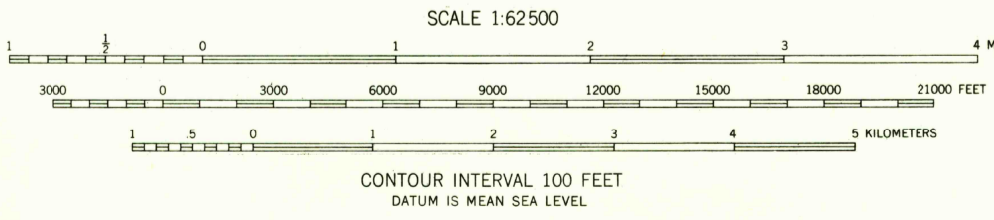
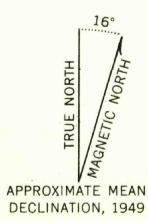
UNITED STATES  
DEPARTMENT OF THE INTERIOR  
GEOLOGICAL SURVEY

WOODSIDE QUADRANGLE  
UTAH  
15 MINUTE SERIES (TOPOGRAPHIC)

(FLAT CANYON)



Mapped, edited, and published by the Geological Survey  
Basic control by USGS and USC&GS  
Supplemental control by plane-table and photo alidade  
Planimetry by the Soil Conservation Service  
Topography from aerial photographs by Mahan plotter methods  
Aerial photographs taken 1938 and 1947. Field check 1949  
Polyconic projection. 1927 North American datum  
10,000-foot grid based on Utah coordinate system,  
central zone  
Unchecked elevations are shown in brown  
Dashed land lines indicate approximate location  
1000-meter Universal Transverse Mercator grid ticks,  
zone 12, shown in blue



Historical File  
Topographic Division

ROAD CLASSIFICATION

Heavy-duty	Light-duty
Medium-duty	Unimproved dirt
U. S. Route	State Route



U.S.G.S.  
FILE COPY  
TOPOGRAPHIC DIVISION

WOODSIDE, UTAH  
N3915-W11015/15  
1948

FOR SALE BY U. S. GEOLOGICAL SURVEY, DENVER 25, COLORADO OR WASHINGTON 25, D. C.  
A FOLDER DESCRIBING TOPOGRAPHIC MAPS AND SYMBOLS IS AVAILABLE ON REQUEST

MAR 24 1960

2005