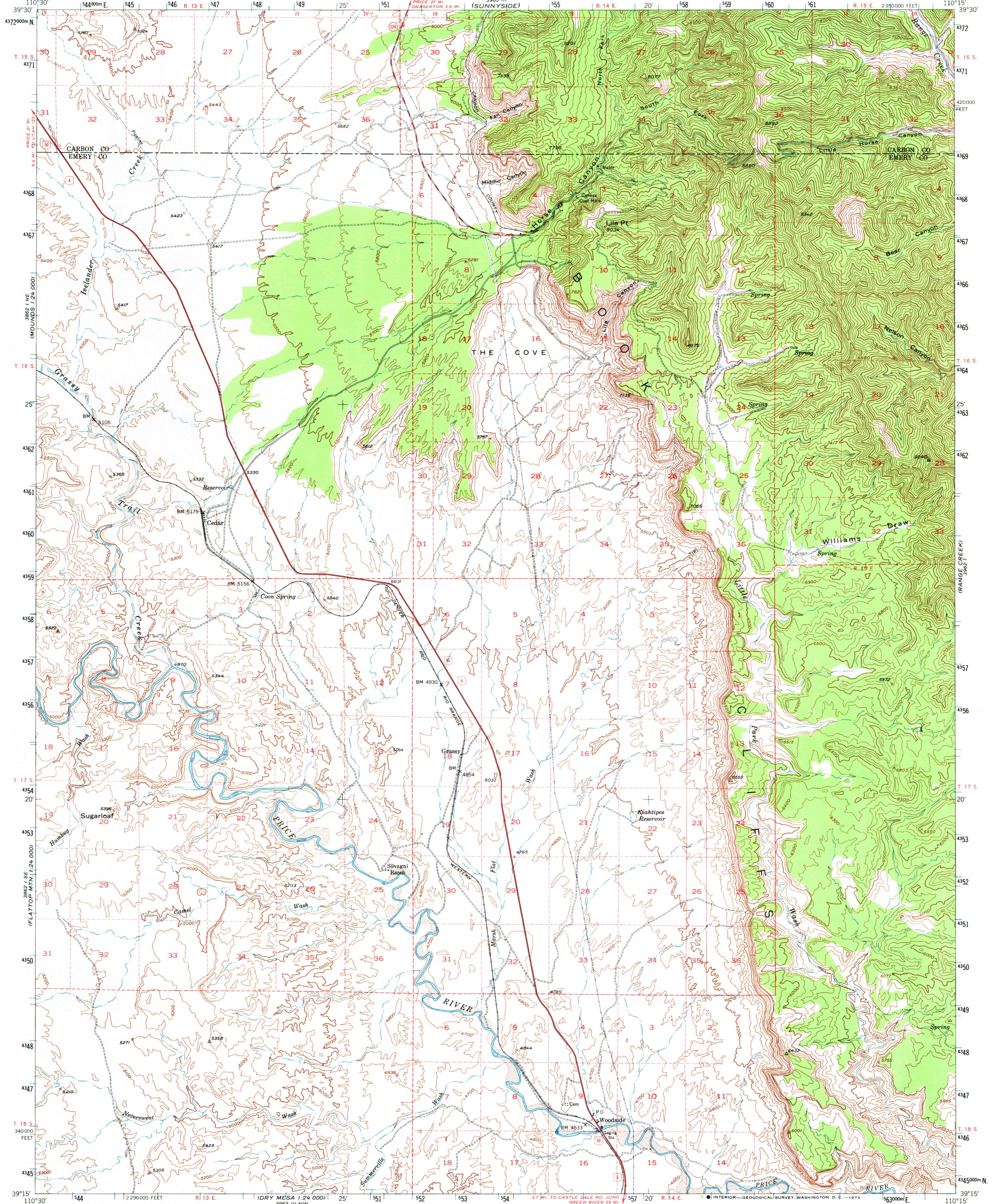
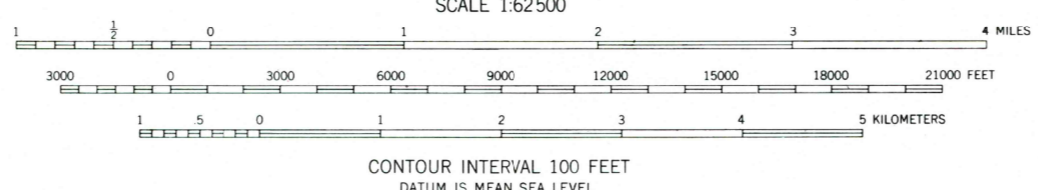
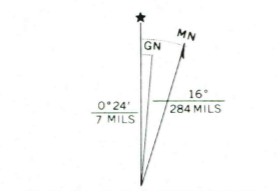


UNITED STATES  
DEPARTMENT OF THE INTERIOR  
GEOLOGICAL SURVEY

WOODSIDE QUADRANGLE  
UTAH  
15 MINUTE SERIES (TOPOGRAPHIC)



Mapped, edited, and published by the Geological Survey  
Basic control by USGS and USC&GS  
Supplemental control by plane-table and photo alidade  
Planimetry by the Soil Conservation Service  
Topography from aerial photographs by Mahan plotter methods  
Aerial photographs taken 1938 and 1947. Field check 1949  
Polyconic projection. 1927 North American datum  
10,000-foot grid based on Utah coordinate system,  
central zone  
Unchecked elevations are shown in brown  
Dashed land lines indicate approximate location  
1000-meter Universal Transverse Mercator grid ticks,  
zone 12, shown in blue



ROAD CLASSIFICATION

Heavy-duty	Light-duty
Medium-duty	Unimproved dirt
U. S. Route	State Route

FOR SALE BY U. S. GEOLOGICAL SURVEY, DENVER, COLORADO 80225 OR WASHINGTON, D. C. 20242  
A FOLDER DESCRIBING TOPOGRAPHIC MAPS AND SYMBOLS IS AVAILABLE ON REQUEST

OCT 15 1973  
WOODSIDE, UTAH  
N3915-W11015/15  
1949  
AMS 3962 IV-SERIES V797

3962 IV NE (CHIMNEY ROCK)

3962 II (FLAT CANYON)

1545