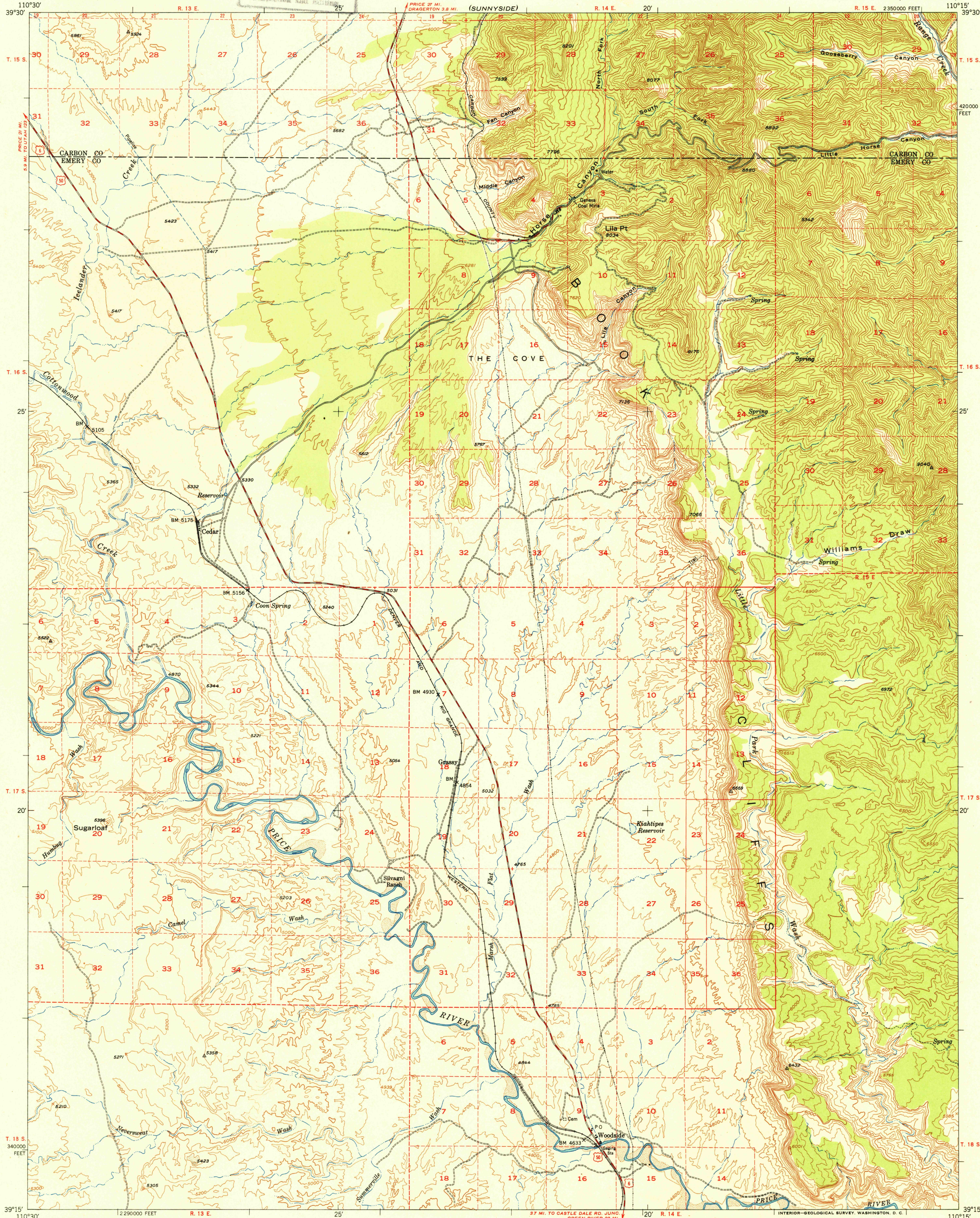


(WELLINGTON)

UNITED STATES  
DEPARTMENT OF THE INTERIOR  
GEOLOGICAL SURVEY

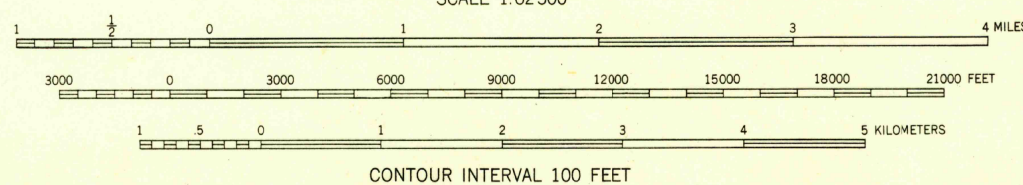
U.S.G.S.  
FILE COPY

WOODSIDE QUADRANGLE  
UTAH  
15 MINUTE SERIES (TOPOGRAPHIC)



Mapped, edited, and published by the Geological Survey  
Basic control by USGS and USC&GS  
Supplemental control by plane-table and photo alidade  
Planimetry by the Soil Conservation Service  
Topography from aerial photographs by Mahan plotter methods  
Aerial photographs taken 1938 and 1947. Field check 1949  
Polyconic projection. 1927 North American datum  
10,000-foot grid based on Utah coordinate system,  
central zone  
Unchecked elevations are shown in brown  
Dashed land lines indicate approximate location

TRUE NORTH  
MAGNETIC NORTH  
APPROXIMATE MEAN  
DECLINATION, 1949



USGS  
Historical File  
Topographic Division

ROAD CLASSIFICATION  
HARD-SURFACE ALL WEATHER ROADS DRY WEATHER ROADS  
Heavy-duty — 4 LANE 16 LANE Improved dirt —  
Medium-duty — 4 LANE 16 LANE Unimproved dirt —  
Loose-surface, graded, or narrow hard-surface —  
U. S. Route State Route

U.S.G.S.  
FILE COPY

WOODSIDE, UTAH  
N3915-W11015/15  
EDITION OF 1950

FOR SALE BY U. S. GEOLOGICAL SURVEY, FEDERAL CENTER, DENVER, COLORADO OR WASHINGTON 25, D. C.  
A FOLDER DESCRIBING TOPOGRAPHIC MAPS AND SYMBOLS IS AVAILABLE ON REQUEST

NOV 24 1950 2105